



Ultra-fast Performance for Tomorrow's VPN Deployments

- Multi-core CPUs deliver up to 3.6 Gbps firewall throughput and 800 Mbps VPN throughput
- Up to 9x the firewall performance and 4.4x the VPN performance of preceding models
- More secure VPN connections with SHA-2 encryption
- VPN High Availability (HA) with dual-WAN failover and fallback support
- L2TP support for iOS, Android and Windows mobile devices
- Auto-provisioned client-to-site IPsec setup with Easy VPN

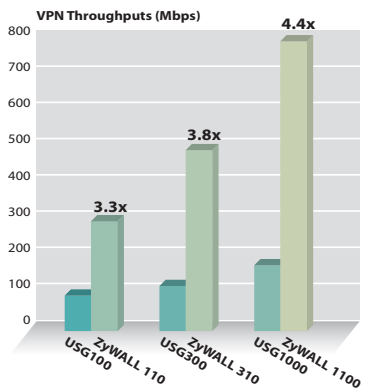
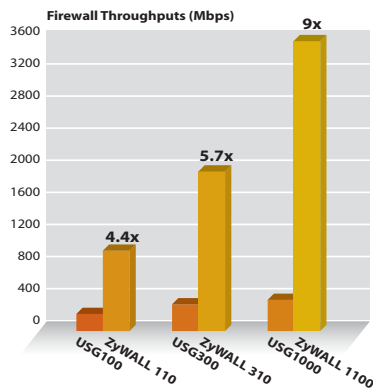
Business operations have become more mobile than ever. New and advanced business applications have also created demand for faster VPN performance, which legacy firewall and UTM appliances cannot satisfy. To keep up with the dynamic business environment, business networks today need to provide branch offices, chain stores and mobile employees faster remote access to headquarter resources. Moreover, they must do so without exposing company resources and customer information to threat and data breach.

ZyXEL's new ZyWALL Series VPN Firewalls are business-grade VPN gateways purpose-built to deliver the fastest performance for multi-site VPN deployments. These high performance VPN Firewalls feature multi-core CPUs and are fine-tuned to deliver ultra-fast performance with up to 3.6 Gbps firewall and 800 Mbps VPN throughputs. The new ZyWALL Series VPN Firewalls also feature the most advanced VPN functionality—SHA-2 encryption, VPN HA and L2TP—for more secure, more reliable and more mobile VPN connectivity.

Benefits

Best-in-class VPN and firewall throughput

The new ZyWALL Series VPN Firewalls are designed with multi-core CPUs to deliver the fastest VPN and firewall performance on the market. High-speed networking performance is guaranteed with up to 3.6 Gbps firewall throughput and 800 Mbps VPN throughput—up to 9x the firewall performance and 4.4x the VPN performance of preceding models. Designed with completely new and advanced hardware platforms, the new ZyWALL Series VPN Firewalls deliver uncompromising performance for high-speed site-to-site and client-to-site VPN applications.



**ZyWALL
110/310/1100**
VPN Firewall





Safer, more reliable VPN connections

Faster processors today have greatly boosted the capabilities of attackers to decrypt VPN tunnels. Legacy VPN encryption algorithms like Message Digest 5 (MD5) and Secure Hash Algorithm 1 (SHA-1) are no longer sufficient to guarantee secured external communications. Supporting the more advanced Secure Hash Algorithm 2 (SHA-2), the ZyWALL Series provides the safest VPN connections in its class and ensures maximum security for business communications.

The complete range of ZyWALL Series VPN Firewalls deliver reliable, non-stop VPN services with dual-WAN failover and fallback support. With two WAN connections—one primary and one for redundancy—the ZyWALL VPN Firewall automatically switches to the backup connection should the primary link fail, and automatically switches back to the primary connection once it is back online.

Unlimited business mobility

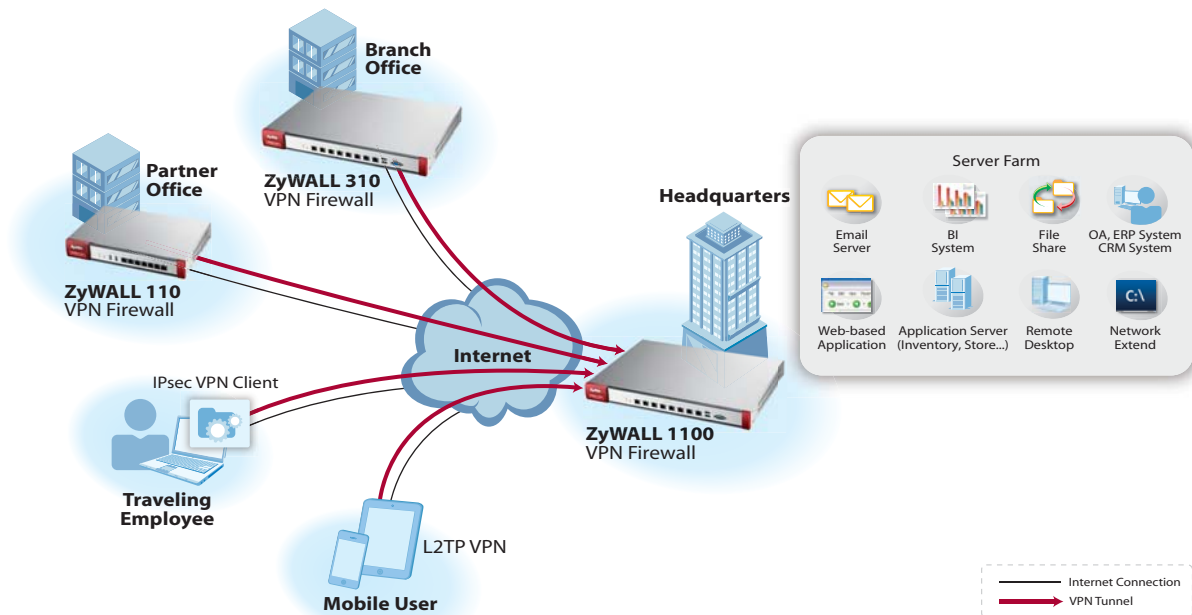
To support dynamic, mobile business operations in today's BYOD (bring your own device) business environment, the ZyWALL Series VPN Firewalls offer unlimited business mobility with Layer 2 Tunneling Protocol (L2TP) VPN for mobile devices. The ZyWALL Series supports L2TP VPN on a wide variety of mobile Internet devices running the iOS, Android and Windows mobile platforms.

Zero-configuration remote access

Virtual private networks provide businesses a secure and convenient way of sharing company resources with partners, customers, or employees on business trips. Yet typical VPN solutions are hard for non-technical users to configure, which greatly reduces their usability and convenience. The ZyWALL Series VPN Firewalls feature Easy VPN to provide auto-provisioned client-to-site IPsec VPN setup. A wizard is available with the ZyXEL IPsec VPN client software that automatically retrieves the VPN configuration file from the remote ZyWALL VPN Firewall and completes the IPsec VPN setup in 3 simple steps. ZyXEL's Easy VPN lowers administration effort and allows partner, customers, or traveling employees to access company servers, email, or data centers easily and securely.

Key Applications




Centralized Service Deployment via VPN





ZyWALL 110/310/1100 VPN Firewall

Specifications

Model	ZyWALL 110	ZyWALL 310	ZyWALL 1100	
Product photo				
Hardware Specifications				
10/100/1000 Mbps RJ-45 ports	2 x WAN, 1 x OPT, 4 x LAN/DMZ	8 (configurable)	8 (configurable)	
USB ports	2	2	2	
System Capacity & Performance^{*1}				
SPI firewall throughput (Mbps)^{*2}	1,000	2,000	3,600	
AES VPN throughput (Mbps)^{*3}	300	500	800	
Unlimited user licenses	Yes	Yes	Yes	
Max. concurrent sessions^{*4}	60,000	100,000	500,000	
New session rate	2,800	8,000	8,000	
Max. concurrent IPsec VPN tunnels	100	200	1,000	
Max. concurrent SSL VPN users	25	50	250	
Included SSL VPN user no.	25	50	250	
Customizable zones	Yes	Yes	Yes	
IPv6 support	Yes	Yes	Yes	
Power Requirements				
Power input	12 V DC, 3.33 A max.	100 - 240 V AC, 50/60 Hz, 1.3 A max.	100 - 240 V AC, 50/60 Hz, 1.3 A max.	
Max. power consumption (watt)	37	58.5	58.5	
Physical Specifications				
Item	Dimensions (WxDxH)(mm/in.)	300 x 178 x 44/ 11.81 x 7 x 1.73	430 x 250 x 44/ 16.93 x 9.84 x 1.73	430 x 250 x 44/ 16.93 x 9.84 x 1.73
	Weight (kg/lb.)	2/4.41	3.3/7.28	3.3/7.28
Packing	Dimensions (WxDxH)(mm/in.)	245 x 152 x 351/ 9.65 x 5.98 x 13.82	519 x 392 x 163/ 20.43 x 15.43 x 6.42	519 x 392 x 163/ 20.43 x 15.43 x 6.42
	Weight (kg/lb.)	2.83/6.24	4.74/10.45	4.74/10.45
Environmental Specifications				
Operating	Temperature	0°C to 40°C/32°F to 104°F	0°C to 40°C/32°F to 104°F	0°C to 40°C/32°F to 104°F
	Humidity	10% to 90% (non-condensing)	10% to 90% (non-condensing)	10% to 90% (non-condensing)
Storage	Temperature	-30°C to 70°C/-22°F to 158°F	-30°C to 70°C/-22°F to 158°F	-30°C to 70°C/-22°F to 158°F
	Humidity	10% to 90% (non-condensing)	10% to 90% (non-condensing)	10% to 90% (non-condensing)
MTBF (hr)	787,109.3	560,811.5	560,811.5	
Certifications				
EMC	FCC Part 15 (Class B), CE EMC (Class B), C-Tick (Class B), BSMI	FCC Part 15 (Class A), CE EMC (Class A), C-Tick (Class A), BSMI	FCC Part 15 (Class A), CE EMC (Class A), C-Tick (Class A), BSMI	
Safety	LVD (EN60950-1), BSMI	LVD (EN60950-1), BSMI	LVD (EN60950-1), BSMI	

Note:

*1: Actual performance may vary depending on network conditions and activated applications.

*2: Maximum throughput based on RFC 2544 (1,518-byte UDP packets).

*3: AES VPN throughput measured based on RFC 2544, using UDP traffic with 1,424-byte packets.

*4: Maximum sessions measured using the industry standard IXIA iLoad testing tool.

Features

Firewall

- Routing and transparent (Bridge) modes
- Zone-based access control list
- Stateful packet inspection
- User-aware policy enforcement
- SIP/H.323 NAT traversal
- ALG supports custom ports

IPv6 Support

- IPv6 ready gold logo certified
- Dual stack
- IPv4 tunneling (6rd and 6to4 transition tunnel)
- Host, router, firewall

Virtual Private Network (VPN)

- ICSA-certified IPsec VPN
- Algorithm: AES, 3DES, DES
- Authentication: SHA-2, SHA-1, MD5
- Key management: Manual key, IKE
- Perfect forward secrecy (DH groups) support 1, 2, 5
- IPsec NAT traversal
- Dead peer detection/relay detection
- PKI (X.509) certificate support
- Centralize VPN support
- VPN Wizard support
- Auto reconnect VPN
- VPN HA (Redundant remote VPN gateways)

SSL VPN

- Clientless secure remote access
- Reverse proxy mode and full tunnel mode
- Unified policy enforcement
- Supports two-factor authentication

High Availability

- Active-passive mode
- Device failure detection and notification
- ICMP and TCP ping check
- Link monitoring
- Auto-sync configurations

Networking

- Routing mode, bridge mode & mixed mode
- Layer 2 port grouping (ZyWALL 110 only)
- Ethernet/PPPoE
- NAT/PAT
- Tagged VLAN (802.1Q)
- Virtual interface (Alias interface)
- Policy-based routing (User-aware)
- Policy-based NAT (SNAT)
- Dynamic routing (RIP v1/v2, OSPF)
- DHCP client/server/relay
- Dynamic DNS support
- WAN trunk (More than 2 ports)
- Per host session limit
- Guaranteed bandwidth
- Maximum bandwidth
- Priority-bandwidth utilization

Authentication

- Local user database
- Microsoft Windows active directory integrate
- External LDAP/RADIUS user database
- Xauth over RADIUS for IPsec VPN
- Forced user authentication (Transparent authentication)
- IP/MAC address binding


System Management

- Role-based administration
- Multiple administrator login
- Multi-lingual Web GUI (HTTPS/HTTP)
- Object-based configuration
- Command line interface (Console/Web console/SSH/TELNET)
- SNMPv2c (MIB-II)
- System configuration rollback
- Firmware upgrade via FTP/Web GUI

Logging & Monitoring

- Comprehensive local logging
- Syslog
- Email alert
- Real-time traffic monitoring
- Built-in daily report
- Advanced reporting (VRPT)

Accessories

Item	Description	Supported OS
ZyWALL IPsec VPN Client 	VPN client software for the ZyWALL and USG Series with Easy VPN for zero-configuration remote access	<ul style="list-style-type: none"> • Windows XP (32-bit) • Windows Server 2003 (32-bit) • Windows Server 2008 (32/64-bit) • Windows Vista (32/64-bit) • Windows 7 (32/64-bit) • Windows 8 (32/64-bit)

For more product information, visit us on the web at www.ZyXEL.com



Copyright © 2013 ZyXEL Communications Corp. All rights reserved. ZyXEL, ZyXEL logo are registered trademarks of ZyXEL Communications Corp. All other brands, product names, or trademarks mentioned are the property of their respective owners. All specifications are subject to change without notice.

