



IP8160



IP8160-W

Cube Network Camera



2MP · 8M IR · Smart Stream II · AEC · PoE ·
WiFi · Compact Size

VIVOTEK's IP8160/IP8160-W is a stylish 2-megapixel cube network camera specifically designed for small-scale retail security applications. With a resolution of 1920x1080 at 30 fps, a removable IR-cut filter and built-in IR illuminators effective up to 8 meters, this remarkable camera provides users with superior image quality around the clock.

When coupled with VIVOTEK's Smart Stream II technology, the IP8160/IP8160-W can reduce both bandwidth and storage consumption by up to 50%* while retaining the same superb image quality as a Full HD camera.

Further, the camera supports two-way audio, and employs Acoustic Echo Cancellation (AEC) to greatly enhance audio quality and provide a clearer, smoother auditory image. VIVOTEK provides two easy-to-install options for this compact camera; the IP8160-W boasts a 802.11b/g/n compatible wireless connection, and the IP8160 is designed for Power over Ethernet (PoE) functionality, making setup of these two powerful cameras both quick and simple.

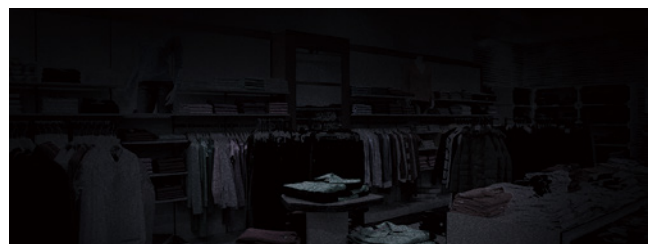
* Depending on scenes

Key Features

- 30 fps @ 1920x1080
- Built-in IR Illuminators up to 8 M
- Smart IR Technology to Avoid Overexposure
- Smart Stream II to Optimize Bandwidth Efficiency
- Built-in Microphone and Speaker for Two-way Audio
- Acoustic Echo Cancellation (AEC) for Optimizing Sound System
- Built-in 802.3af Compliant PoE (IP8160)
- Built-in 802.11 b/g/n WLAN (IP8160-W)
- Built-in MicroSD/SDHC/SDXC Card Slot for On-board Storage
- Compact Design



IR On



IR Off

Technical Specifications

Model	IP8160: PoE, 8M IR IP8160-W: WiFi, 8M IR	Interface	Built-in microphone Built-in speaker
System Information		Effective Range	5 meters
CPU	Multimedia SoC (System-on-Chip)	Network	
Flash	128 MB	Users	Live viewing for up to 10 clients
RAM	256 MB	Protocols	IP8160: IPv4, IPv6, TCP/IP, HTTP, HTTPS, UPnP, RTSP/RTP/RTCP, IGMP, SMTP, FTP, DHCP, NTP, DNS, DDNS, PPPoE, CoS, QoS, SNMP, 802.1X, SSL/TLS, ARP IP8160-W: IPv4, IPv6, TCP/IP, HTTP, HTTPS, UPnP, RTSP/RTP/RTCP, IGMP, SMTP, FTP, DHCP, NTP, DNS, DDNS, SNMP, ARP
Camera Features		Interface	IP8160: 10 Base-T/100 Base-TX Ethernet (RJ-45) IP8160-W: IEEE 802.11 b/g/n WLAN
Image Sensor	1/2.9" Progressive CMOS	ONVIF	Supported, specification available at www.onvif.org
Maximum Resolution	1920x1080	Intelligent Video	
Lens Type	Fixed-focal	Video Motion Detection	Five-window video motion detection
Focal Length	f = 2.8 mm	Alarm and Event	
Aperture	F1.8	Alarm Triggers	Motion detection, manual trigger, periodical trigger, system boot, recording notification, camera tampering detection, audio detection
Field of View	113° (Horizontal) 63° (Vertical) 136° (Diagonal)	Alarm Events	Event notification using HTTP, SMTP, FTP, NAS server and SD Card File upload via HTTP, SMTP, FTP, NAS server and SD card
Shutter Time	1/5 sec. to 1/32,000 sec.	General	
WDR Technology	WDR Enhanced	Connectors	IP8160: RJ-45 cable connector for 10/100Mbps Network/PoE connection*1 IP8160-W: Micro USB connector for DC 5V power input*1
Day/Night	Removable IR-cut filter for day & night function	LED Indicator	System power and status indicator
Minimum Illumination	0.07 Lux @ F1.8 (Color) < 0.01 Lux @ F1.8(B/W)	Power Input	IP8160: IEEE 802.3af POE Class 0 IP8160-W: DC 5V
Pan/Tilt/Zoom Functionalities	ePTZ: 48x digital zoom (4x on IE plug-in, 12x built in)	Power Consumption	IP8160: Max. 5.5 W IP8160-W: Max. 8 W
IR Illuminators	Built-in IR illuminators, effective up to 8 meters with Smart IR IR LED*2	Dimensions	Ø 66 x 38.9 mm
On-board Storage	Slot type: MicroSD/SDHC/SDXC card slot Seamless Recording	Weight	IP8160: 100.6 g (Camera unit), 58 g (Stand) IP8160-W: 62 g (Camera unit), 58 g (Stand)
Video		Safety Certifications	CE, LVD, FCC Class B, VCCI, C-Tick
Compression	H.264 & MJPEG	Operating Temperature	Starting Temperature: 0°C ~ 40°C (32°F ~ 104°F) Working Temperature: 0°C ~ 40°C (32°F ~ 104°F)
Maximum Frame Rate	30 fps @ 1920x1080 15 fps @ 1920x1080 (Acoustic Echo Cancellation On)	Humidity	90%
Maximum Streams	3 simultaneous streams	Warranty	24 months
S/N Ratio	70 dB	System Requirements	
Dynamic Range	70 dB	Operating System	Microsoft Windows 8/7/Vista/XP/2000
Video Streaming	Adjustable resolution, quality and bitrate Smart Stream II		
Image Settings	Time stamp, text overlay, flip & mirror; Configurable brightness, contrast, saturation, sharpness, white balance, exposure control, gain, backlight compensation, privacy masks; Scheduled profile settings, defog, 3DNR, video rotation		
Audio			
Audio Capability	Two-way Audio (Full duplex)		
Compression	G.711, G.726		

Technical Specifications

Web Browser	Mozilla Firefox 7~43 (streaming only) Internet Explorer 7/8/9/10/11
Other Players	VLC: 1.1.11 or above QuickTime: 7 or above
Included Accessories	
Power Adapter	IP8160-W: 5V, 2A USB connector adapter
Others	Quick installation guide, warranty card, stand with screw kit, USB connector adapter(IP8160-W)

Dimensions

