

# ClearOne®

**CHAT 160** Group Speakerphone for Skype™



**CHAT 60** Personal Speakerphone for Skype™

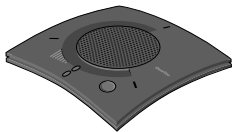
## QUICK START GUIDE



## CHAT 160 and CHAT 60 Package Contents

---

The CHAT 160 packaging contains the items shown below. If any items are missing please contact Customer Support.



**CHAT 160**



**12' USB Cable**



**Quick Start  
Guide**

The CHAT 60 packaging contains the items shown below. If any items are missing please contact Customer Support.



**CHAT 60**



**3' USB Cable**



**Quick Start  
Guide**

## CHAT 160 and CHAT 60 Specifications and Requirements

---

### System Requirements

Microsoft® Windows™ XP or Vista  
Skype: 1GHz CPU, 256MB RAM

### Technical Specifications

#### USB

USB 2.0 compatible  
USB connector: Type B  
USB cable, black

#### Loudspeaker

Bandwidth:  
CHAT 60: 220Hz – 14kHz  
CHAT 160: 200Hz – 20kHz  
Maximum output levels  
CHAT 60: 80dB SPL @ 1'  
CHAT 160: 86dB SPL @ 1'

#### Microphone(s)

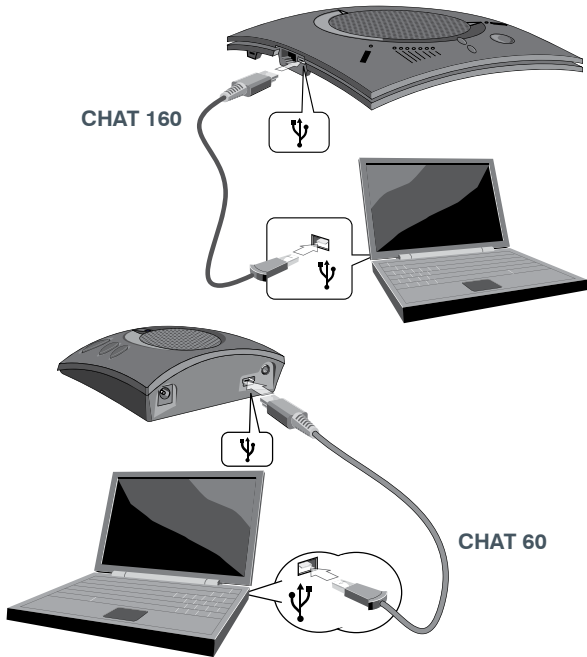
Bandwidth: 20Hz – 10kHz

#### Power

USB powered: 5 VDC @ 500mA maximum

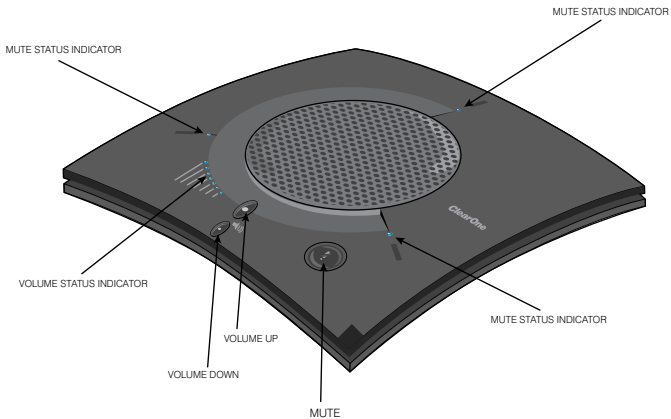
## Connecting to your computer

---



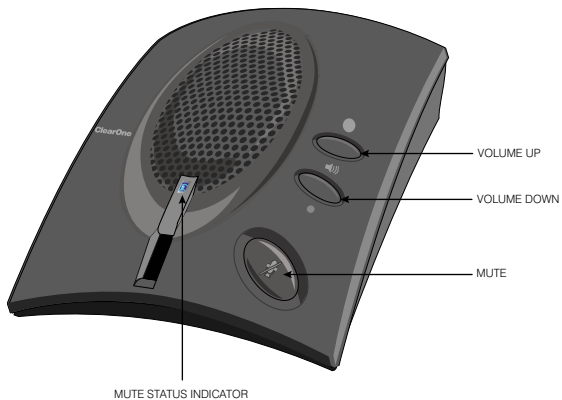
## CHAT 160 Features and Operation

---



## CHAT 60 Features and Operation

---



## Using the CHAT 160 and CHAT 60 with Skype

---

### With your CHAT device plugged in to your computer:

1. Launch [Skype](#) from your **Start - Programs** tool bar (or desktop shortcut)
2. Log in to Skype (or create a new account)
3. A dialog box at the top of the page will alert you that a new audio device was found and will list your CHAT unit. Select **OK**.
4. Test your device with the Echo / Sound Test Service
5. Enjoy!

**Important!** CHAT devices are designed to work on flat, stable surfaces with no obstructions. For best results, **do not** hold or move the device while in use.

**Note:** When you plug a CHAT speakerphone into your PC or laptop it will become the default audio device for Windows. More information can be found on the Microsoft® Website:

<http://support.microsoft.com/kb/936004> (Vista)

<http://support.microsoft.com/kb/935708> (XP)

## Software downloads and product support

---

Updates, user manuals and product information for the CHAT 60 and CHAT 160 are available at:

<http://chat60.clearone.com>

<http://chat160.clearone.com>

The CHAT 60 and CHAT 160 are specifically designed to be used with Skype. However, these products can also be used with other devices such as enterprise telephones and other applications such as VoIP softphones, web conferencing, instant messaging and PC-based gaming. For more information and to download applicable software, access:

<http://skype.clearone.com>

For more information about Skype and to download the Skype software, access:

<http://www.skype.com>

Technical support for your CHAT product is available at:

1-800-283-5936;

Monday through Friday, 9:00 AM to 8:00 PM, EST

Or via email:

[tech.support@clearone.com](mailto:tech.support@clearone.com)