


Installation Guide

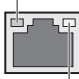

5/8-Port Gigabit Easy Smart Switch

TL-SG105E/TL-SG108E

Power

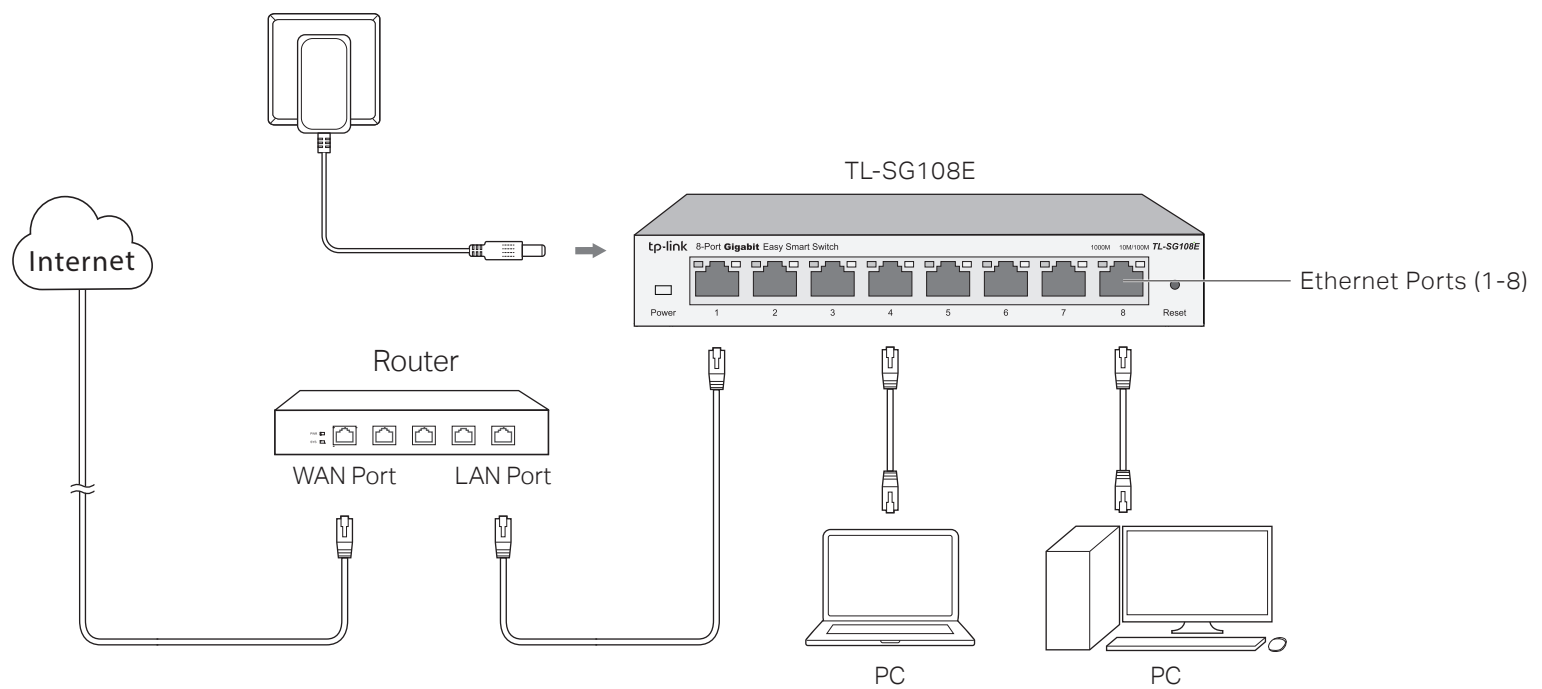
 On: Power on
 Power Off: Power off

Link/Act

 1000M (Green)
 On: Running at 1000Mbps
 Flashing: Transmitting/receiving data
 10/100M (Yellow)
 On: Running at 10/100Mbps
 Flashing: Transmitting/receiving data

Note: For simplicity, we will take TL-SG108E for example throughout this Guide.

Connection



Configuration

The switch is plug and play. To manage the switch, you can use the Web-based GUI or the configuration utility. The utility is provided on the resource CD and only supported on Windows now.

Using the Web-based GUI

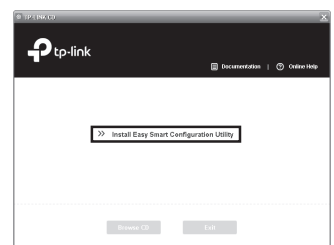
1. Prepare your computer with a static IP address 192.168.0.x ("x" ranges from 2 to 254), and a subnet mask 255.255.255.0.
2. Visit the Web-based GUI with the default IP address of the switch <http://192.168.0.1>, and log in with **admin** as both user name and password. Then configure the switch on the GUI.




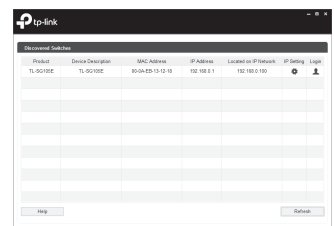
Using the configuration utility


1. Insert the resource CD into a computer connected to the switch.

2. The resource CD home screen will appear. If not, double click **AutoRun.exe** on the resource CD. Then click **Install Easy Smart Configuration Utility** on the home screen and follow the prompts to install the program.



3. Double click the icon  on the desktop, and the utility home page displays a list of TP-LINK Easy Smart Switches on the local network.



4. Make sure the switch that you want to manage is in the same subnet as your computer. You can click  to configure the switch IP address.
5. Double click the switch that you want to configure. Next enter the username and password (both **admin**) for it. Then use the utility to configure the switch.

For more details, see the **User Guide** and the **Easy Smart Configuration Utility User Guide** on the resource CD.

Specifications

General Specifications

| | |
|-----------------------|--|
| Standard | IEEE802.3i, IEEE802.3u, IEEE802.3ab, IEEE802.3x, IEEE802.1p, IEEE802.1q |
| Protocol | CSMA/CD |
| Data Transfer Rate | Ethernet: 10Mbps (Half Duplex), 20Mbps (Full Duplex) Fast Ethernet: 100Mbps (Half Duplex), 200Mbps (Full Duplex) Gigabit Ethernet: 2000Mbps (Full Duplex) |
| Network Media (Cable) | 10Base-T: UTP category 3, 4, 5 cable (maximum 100m) EIA/TIA-568 100Ω STP (maximum 100m) 100Base-TX: UTP category 5, 5e cable (maximum 100m) EIA/TIA-568 100Ω STP (maximum 100m) 1000Base-T: UTP category 5e cable (maximum 100m) EIA/TIA-568 100Ω STP (maximum 100m) |
| Interface | 5/8 10/100/1000Mbps Auto-Negotiation RJ45 Ports |
| LED indicators | Power, 10/100M LED, 1000M LED |
| Transfer Method | Store-and-Forward |
| MAC Address Learning | Automatically learning, automatically aging |
| Frame Filter Rate | 10Base-T: 14881pps/Port 100Base-Tx: 148810pps/Port 1000Base-T: 1488095pps/Port |
| Frame Forward Rate | 10Base-T: 14881pps/Port 100Base-Tx: 148810pps/Port 1000Base-T: 1488095pps/Port |

Environmental and Physical Specifications

| | |
|-----------------------|------------------------------------|
| Operating Temperature | 0 °C to 40 °C (32 °F to 104 °F) |
| Storage Temperature | -40 °C to 70 °C (-40 °F to 158 °F) |
| Operating Humidity | 10%RH to 90%RH non-condensing |
| Storage Humidity | 5%RH to 95%RH non-condensing |

FCC STATEMENT

This equipment has been tested and found to comply with the limits for a Class B digital device, pursuant to part 15 of the FCC Rules. These limits are designed to provide reasonable protection against harmful interference in a residential installation. This equipment generates, uses and can radiate radio frequency energy and, if not installed and used in accordance with the instructions, may cause harmful interference to radio communications. However, there is no guarantee that interference will not occur in a particular installation. If this equipment does cause harmful interference to radio or television reception, which can be determined by turning the equipment off and on, the user is encouraged to try to correct the interference by one or more of the following measures:

- Reorient or relocate the receiving antenna.
 - Increase the separation between the equipment and receiver.
 - Connect the equipment into an outlet on a circuit different from that to which the receiver is connected.
 - Consult the dealer or an experienced radio/ TV technician for help.
- This device complies with part 15 of the FCC Rules. Operation is subject to the following two conditions:
- 1) This device may not cause harmful interference.
 - 2) This device must accept any interference received, including interference that may cause undesired operation.

Any changes or modifications not expressly approved by the party responsible for compliance could void the user's authority to operate the equipment.

CE Mark Warning

This is a class B product. In a domestic environment, this product may cause radio interference, in which case the user may be required to take adequate measures.

Industry Canada Statement

CAN ICES-3 (B)/NMB-3(B)



Продукт сертифіковано згідно з правилами системи УкрСЕПРО на відповідність вимогам нормативних документів та вимогам, що передбачені чинними законодавчими актами України.

Frequently Asked Questions (FAQ)

Q1. Why is the Power LED not lit?

The Power LED should be lit when the power system is working normally. If the Power LED is not lit, please try the following:

A1: Make sure the power adapter is connected to the switch with power source properly.

A2: Make sure the voltage of the power supply meets the requirements of the input voltage of the switch.

A3: Make sure the power source is ON.

Q2. Why is the Link/Act LED not lit while a device is connected to the corresponding port?

Please try the following:

A1: Make sure that the cable connectors are firmly plugged into the switch and the device.

A2: Make sure the connected device is turned on and works normally.

A3: The cable must be less than 100 meters long (328 feet).



For technical support and other information, please visit <http://www.tp-link.com/support>, or simply scan the QR code.

Some models featured in this guide may be unavailable in your country or region. For local sales information, visit <http://www.tp-link.com>.

EAC

Safety Information

- Avoid water and wet locations.
- Don't disassemble the product, or make repairs yourself. You run the risk of electric shock and voiding the limited warranty. If you need service, please contact us.

BSMI Notice

安全諮詢及注意事項

- 請使用原裝電源供應器或只能按照本產品注明的電源類型使用本產品。
- 清潔本產品之前請先拔掉電源線。請勿使用液體、噴霧清潔劑或濕布進行清潔。
- 注意防潮，請勿將水或其他液體潑灑到本產品上。
- 插槽與開口供通風使用，以確保本產品的操作可靠並防止過熱，請勿堵塞或覆蓋開口。
- 請勿將本產品置放於靠近熱源的地方。除非有正常的通風，否則不可放在密閉位置中。
- 請不要私自打開機殼，不要嘗試自行維修本產品，請由授權的專業人士進行此項工作。

Explanation of the symbols on the product label

| | |
|--|---|
| | DC voltage |
| | Indoor use only |
| | RECYCLING This product bears the selective sorting symbol for Waste electrical and electronic equipment (WEEE). This means that this product must be handled pursuant to European directive 2012/19/EU in order to be recycled or dismantled to minimize its impact on the environment. User has the choice to give his product to a competent recycling organization or to the retailer when he buys a new electrical or electronic equipment. |