



Touch Screen Controller 4G

Touch screen controller is a dedicated device that will give you ability to setup Yacht router and easily control wireless networks and Internet connections on your vessel. It is embedded device with the same level of functionality as control software that is used on a computer running Windows OS that control Yacht Routers with addition of several features regarding built-in upgrade and software version control functionality.

- replace dedicated computer for Yacht Router setup and control
- connectable to any Yacht Router model (via Ethernet or WIFI)
- 8" touch screen color display
- single glass touch surface (IP64)
- fanless design
- wall mount installation (VESA)
- panel mount installation
- remote controller (brightness, power, volume)
- ambient light sensor for automatic dimming
- maintenance-free, one-touch software update
- power input 9-36 VDC or 110-240 VAC (via AC/DC adapter)

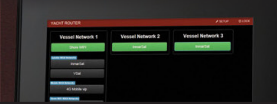


Compact design, single glass touch surface



Multiple I/O ports, VESA mount, fanless design

Specifications



Display

Touch screen: yes (single glass panel)
LCD size: 8"
LCD resolution: 800x600 px
LCD brightness: 250 cd/m²
LCD viewing angle: 140°(H) / 130°(V)
IP rating: 64 (front panel only)

I/O ports and hardware

USB: 4 + 1 Mini USB on front panel
LAN (GbE): 1
COM: 1x RS232, 1x RS422/485
Audio out: yes
Microphone: yes (integrated)
Loudspeakers: yes
Ambient light sensor: yes

Dimensions and weight

Dimensions: 215 (W) x 188 (H) x 46 (D)
Weight: 1.43 kg / 2.2 kg

Operating temperature and humidity

Operating Temperature (°C): -20°C ~ 40°C (with ambient with air flow)
Humidity: 10% to 95% (non-condensing)

Power

Power requirement: 9-36 VDC
Power adapter: 36W (input: 90VAC~264VAC, 50/60 Hz, output: 12VDC)

Mounting

Panel: yes (with additional panel mount kit - check accessories)
Wall: yes (mount not supplied by Locomarine, VESA 75x75 mm standard)
Stand: yes (mount not supplied by Locomarine, VESA 75x75 mm standard)

Accessories

Remote control: yes (supplied with device)
Panel mount kit: available (not included in the package, order code: LTSC-AC-1)

Ordering information (package)

Code: LTSC-P