

Fibreglass Omni antenna

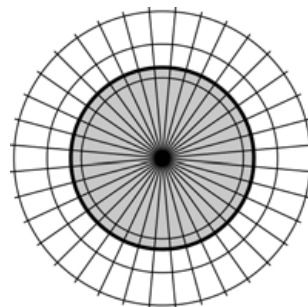
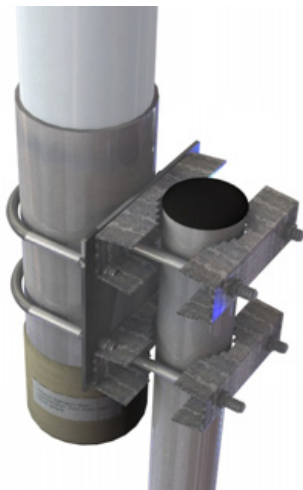
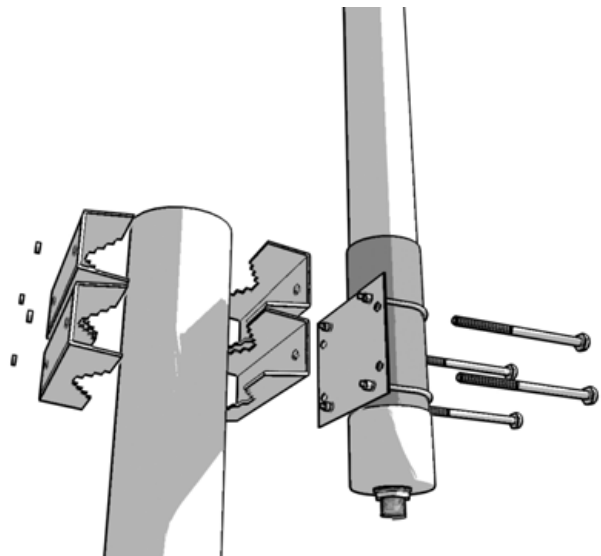
Gain 8 dBi



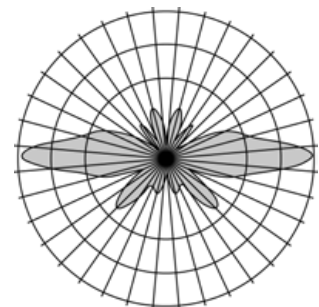
- Fibreglass Radome for maximum durability
- Guaranteed no up tilt radiation
- Strong pole brackets included
- Economically priced
- Individually tested
- Aluminum parts
- Vertical polarization
- 8 dBi Antenna gain
- Type N Female connector
- Designed for professional users
- Super strong heavy duty housing

Specifications

| | |
|---------------------------|--|
| Frequency Range | 2400 - 2485 MHz |
| Gain | 8 dBi |
| VSWR | 1:1,8 |
| Impedance | 50 OHM |
| Input Power | 50W |
| Azimuth beam width | 360 degree |
| Elevation beam width | 17 Degree |
| Used materials | Fibreglass, aluminium PVC, galvanized steel |
| Max. wind speed | 216 km/u |
| Weight | 1,15 Kg incl. brackets |
| Dimension (Dia. x Length) | (43mm x 710mm) |



Azimuth radiation pattern



Elevation radiation pattern

