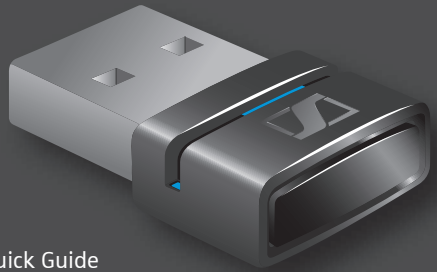


# BTD 800 USB

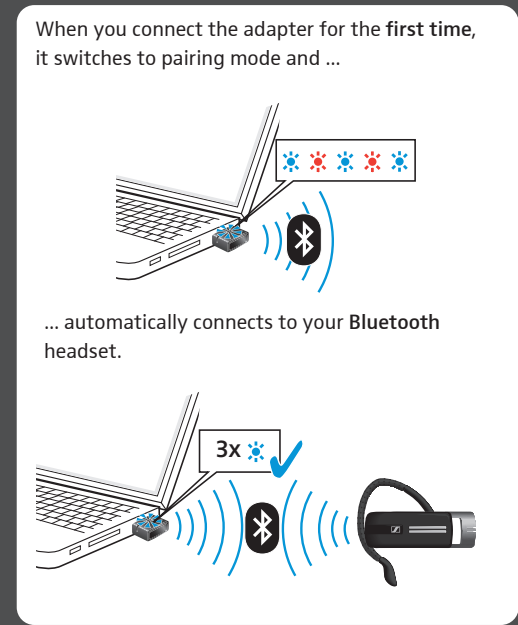
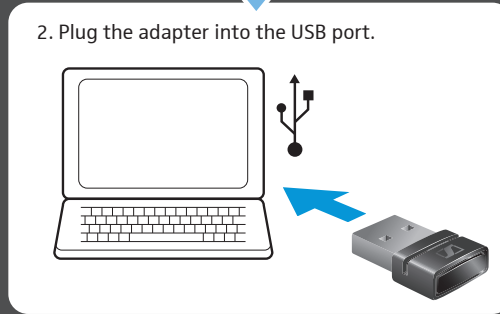
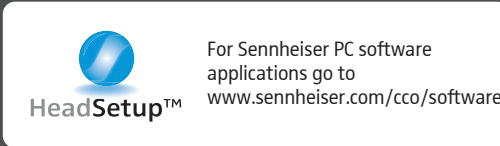
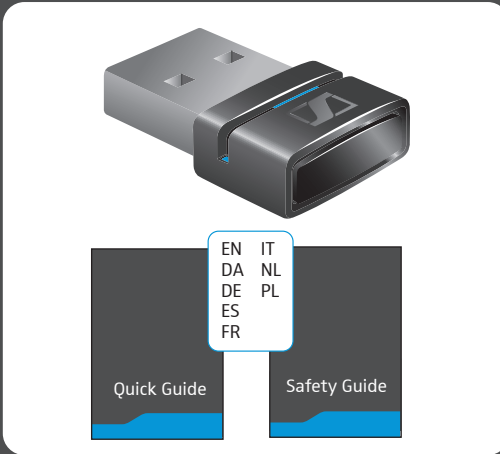


Quick Guide  
Kort vejledning  
Kurzanleitung  
Instrucciones resumidas  
Guide rapide  
Istruzioni brevi  
Beknopte gebruiksaanwijzing  
Krótka instrukcja obsługi



Package contents | Leveringsomfang | Lieferumfang | Volumen de suministro | Contenu | Dotazione | Omvang levering | Zakres dostawy

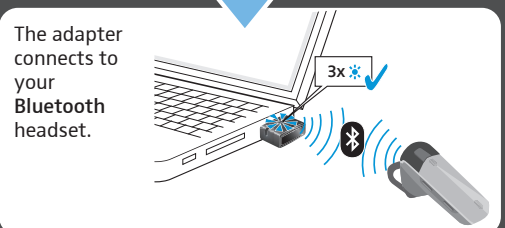
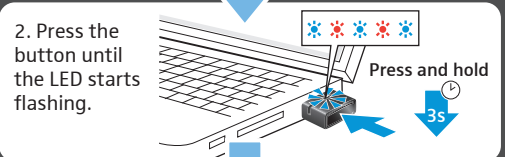
Connecting the BTD 800 USB | Tilslutning af BTD 800 USB | BTD 800 USB anschließen | Conexión del BTD 800 USB | Raccorder le BTD 800 USB | Collegamento di BTD 800 USB | BTD 800 USB aansluiten | Podłączenie USB BTD 800



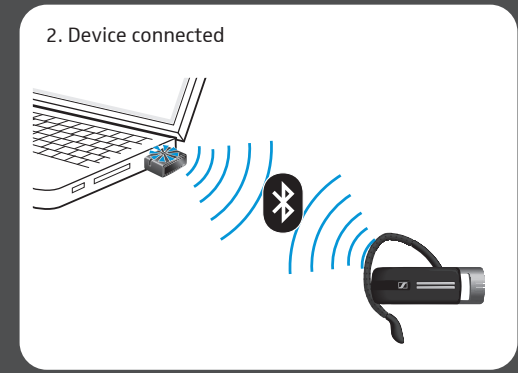
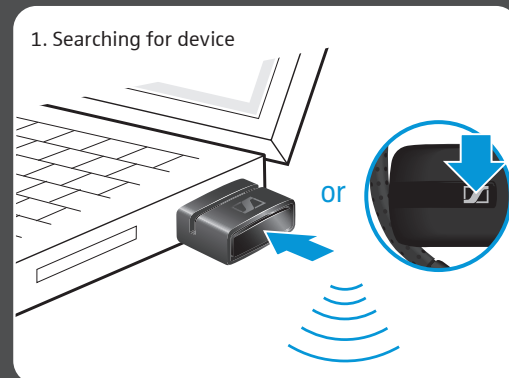
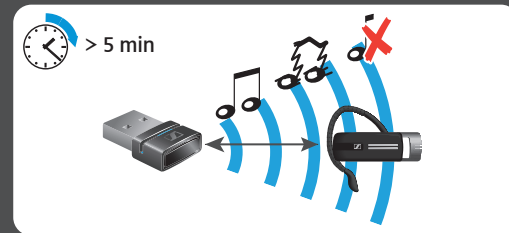
Pairing the BTD 800 USB with another headset | Forbin-delse af BTD 800 USB med endnu et hovedsæt | BTD 800 USB mit einem weiteren Headset verbinden | Conectar el BTD 800 USB con otro headset | Appairer le BTD 800 USB avec une oreillette supplémentaire | Collegamento di BTD 800 USB con un ulteriore headset | BTD 800 USB met een extra headset verbinden | Połączenie USB BTD 800 z kolejnym zestawem słuchawkowym

Overview of the LED indications | Oversigt over LED-visninger | Übersicht der LED-Anzeigen | Vista general de indicadores LED | Vue d'ensemble des indications de la LED | Panoramica degli indicatori LED | Overzicht van de LED-aanduidingen | Przegląd diod LED

Leaving the Bluetooth transmission range | Uden for Bluetooth-rækkevidde | Bluetooth-Reichweite verlassen | Salir del alcance Bluetooth | Quitter la portée Bluetooth | Uscita dalla portata Bluetooth | Bluetooth-reikwijdte verlaten | Opuszczenie zasięgu Bluetooth



LED flashes	Meaning
	pairing mode
	successful
	failed
	connecting
	connected
	incoming call
	outgoing/active call
	Music streaming standard quality (SBC)
	high quality (apt-X)
	Microphone mute



Sennheiser Communications A/S  
Langager 6, 2680 Solrød Strand, Denmark  
www.sennheiser.com, Printed in China, Publ. 02/13, A01