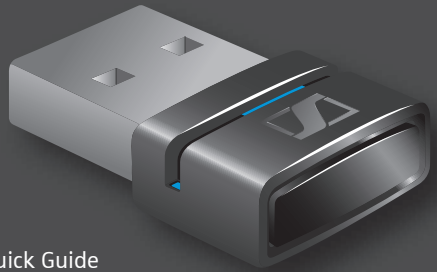


BTD 800 USB

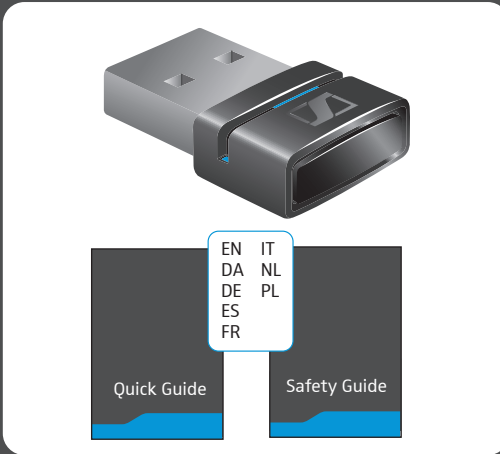


Quick Guide
Kort vejledning
Kurzanleitung
Instrucciones resumidas
Guide rapide
Istruzioni brevi
Beknopte gebruiksaanwijzing
Krótka instrukcja obsługi



Package contents | Leveringsomfang | Lieferumfang | Volumen de suministro | Contenu | Dotazione | Omvang levering | Zakres dostawy

Connecting the BTD 800 USB | Tilslutning af BTD 800 USB | BTD 800 USB anschließen | Conexión del BTD 800 USB | Raccorder le BTD 800 USB | Collegamento di BTD 800 USB | BTD 800 USB aansluiten | Podłączenie USB BTD 800



For Sennheiser PC software applications go to www.sennheiser.com/cco/software

1. Activate pairing mode on your Bluetooth® headset.

2. Plug the adapter into the USB port.

When you connect the adapter for the first time, it switches to pairing mode and ...

... automatically connects to your Bluetooth headset.

Pairing the BTD 800 USB with another headset | Forbin-delse af BTD 800 USB med endnu et hovedsæt | BTD 800 USB mit einem weiteren Headset verbinden | Conectar el BTD 800 USB con otro headset | Appairer le BTD 800 USB avec une oreillette supplémentaire | Collegamento di BTD 800 USB con un ulteriore headset | BTD 800 USB met een extra headset verbinden | Połączenie USB BTD 800 z kolejnym zestawem słuchawkowym

Overview of the LED indications | Oversigt over LED-visninger | Übersicht der LED-Anzeigen | Vista general de indicadores LED | Vue d'ensemble des indications de la LED | Panoramica degli indicatori LED | Overzicht van de LED-aanduidingen | Przegląd diod LED

Leaving the Bluetooth transmission range | Uden for Bluetooth-rækkevidde | Bluetooth-Reichweite verlassen | Salir del alcance Bluetooth | Quitter la portée Bluetooth | Uscita dalla portata Bluetooth | Bluetooth-reikwijdte verlaten | Opuszczenie zasięgu Bluetooth

1. Activate pairing mode on your Bluetooth headset.

2. Press the button until the LED starts flashing.

The adapter connects to your Bluetooth headset.

LED flashes	Meaning
	pairing mode
	successful
	failed
	connecting
	connected
	incoming call
	outgoing/active call
	Music streaming standard quality (SBC)
	high quality (apt-X)
	Microphone mute

> 5 min

1. Searching for device

2. Device connected

FAQ
Technical data www.sennheiser.com/cco/support

Sennheiser Communications A/S
Langager 6, 2680 Solrød Strand, Denmark
www.sennheiser.com, Printed in China, Publ. 02/13, A01