

# FusionHub

## SpeedFusion Virtual Appliance



## Extend SpeedFusion to Your Cloud

FusionHub is the new virtual SpeedFusion appliance from Peplink. With FusionHub, you can establish SpeedFusion connections between cloud servers and physical Peplink devices.

FusionHub runs on nearly all mainstream virtual machine software including VMware, Citrix XenServer and Oracle VirtualBox.

## The Benefits of FusionHub

**SpeedFusion™**  
Bonding Technology



### Bandwidth Aggregation

Connect to your cloud server with the combined speed of all your WAN links. Enjoy faster Internet access by using your server's high-throughput connection.

- ✓ **Remote Streaming:** Stream videos and transfer large files quickly, even in remote areas with limited Internet access.
- ✓ **Combine Different Sources:** DSL, MPLS, 3G, 4G LTE: use them all together to increase your bandwidth.

**UNBREAKABLE**



### Session Persistence

Combine any type of connection from multiple ISPs to create a highly available connection between your device and your FusionHub. This connection will provide unbreakable VPN.

- ✓ **Packet-Level Seamless Failover:** Even when a WAN link fails, your sessions will stay active. VoIP calls will continue without interruption.
- ✓ **Cellular Backup Connections:** Set bandwidth-limited links (3G/4G LTE) to perform hot failover in case your primary link fails.



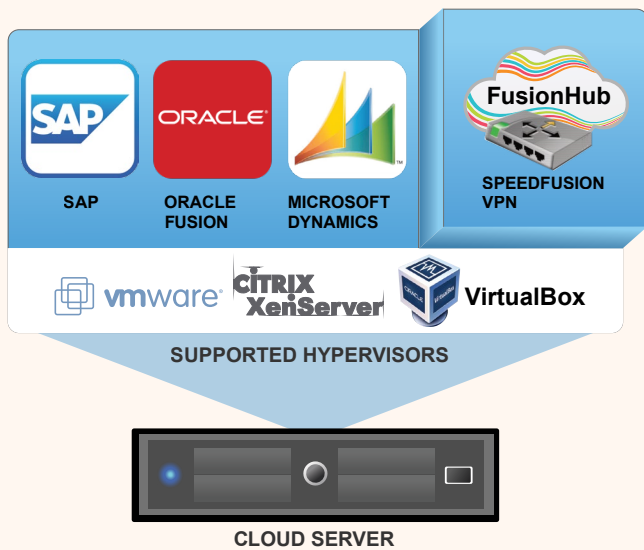
### Deploy on Any Cloud Server

Use FusionHub in private, public, and hybrid clouds. Deploy FusionHub anywhere at a moment's notice. Establish as many FusionHubs as you need to support your customers.

- ✓ **Local and Remote Deployment:** Deploy in your local datacenter or remotely in a public cloud without needing new hardware.
- ✓ **InControl 2 Central Management:** All FusionHub instances can be centrally managed with a single interface using InControl 2.

## FusionHub for Enterprise

### Power up Your Business Apps With SpeedFusion



Combine multiple commodity links from different ISPs to create an unbreakable connection to your most important enterprise applications.

- ✓ **Faster Applications:** Access your applications using combined bandwidth.
- ✓ **Session Persistence:** Maintain session integrity even when WAN connections break.
- ✓ **Pay as You Grow Pricing:** Save on initial capital expenditures. Grow your network affordably.

### Enterprise Deployments



#### Branch Office VPN

Remotely access head office resources with the same bandwidth and reliability as a local user.

#### Faster Internet via Datacenter

Route remote site traffic over SpeedFusion for centralized Web filtering or to take advantage of high-speed Internet links at the main site.

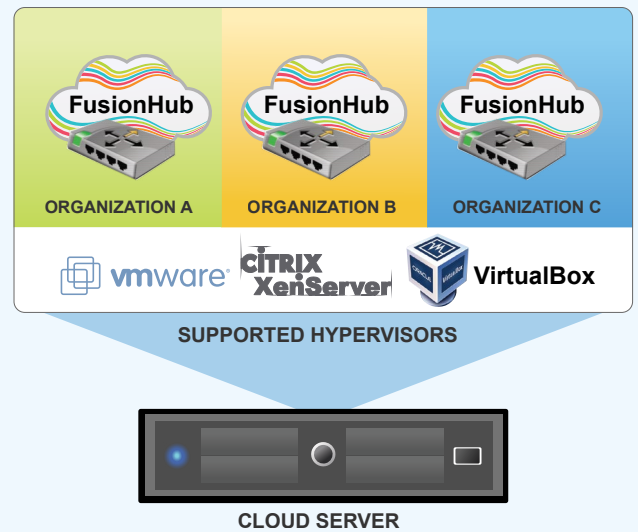


#### Upload HD Video on 4G LTE

Bond multiple 4G LTE connections for fast HD video uploads to your cloud-based datacenter.

## FusionHub for MSP

### Provide SpeedFusion to Your Customers



Run multiple instances of FusionHub in your datacenter or cloud infrastructure to provide each customer with their own SpeedFusion enabled cloud server.

- ✓ **Add Value to Your Existing Services:** Add SpeedFusion to your services to make them faster.
- ✓ **Solve Connectivity Issues:** Use bandwidth bonding to provide fast Internet to places with poor Internet access.
- ✓ **Offer Unbreakable VPN:** Provide highly available redundant site-to-site VPN connectivity using cheap commodity Internet connections.

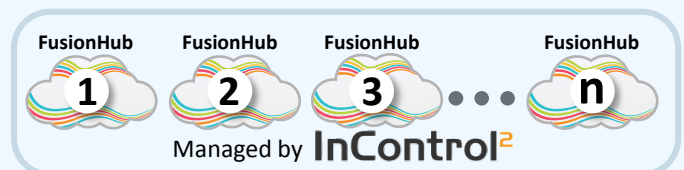
### MSP Deployments

#### Offer SpeedFusion as a Service



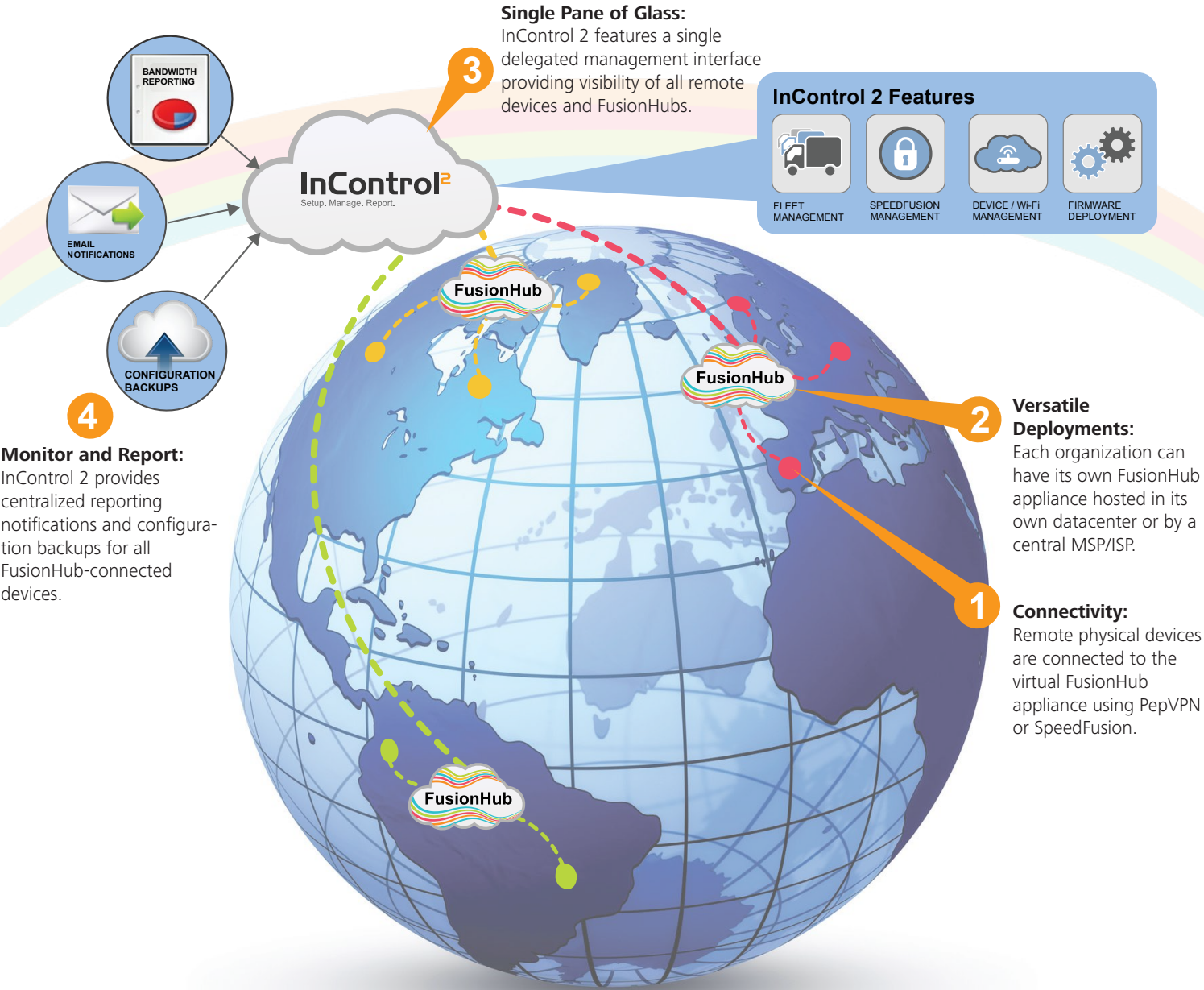
Run multiple FusionHub virtual appliances to provide separate SpeedFusion WANs for your customers.

#### Unlimited Scalability

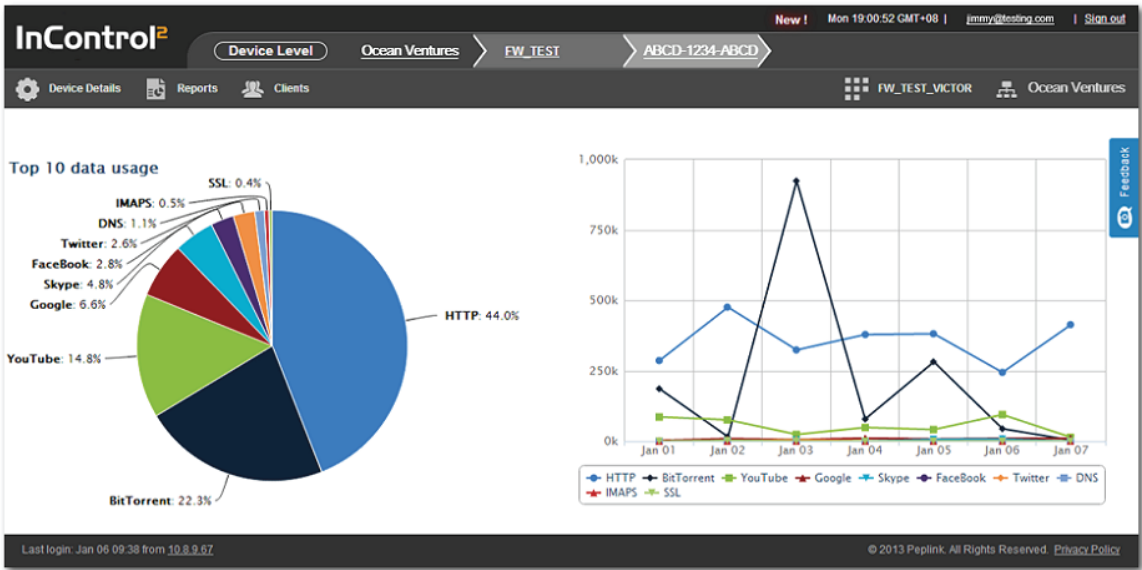


Run as many FusionHubs as you need and manage them using InControl 2. Pay as you grow with pricing based on throughput and the number of peers connected.

Infinitely Scalable Architecture



Deep Client Insight



In addition to the ability to organize your devices and FusionHubs, InControl 2 provides you with real-time client information. Gain insight into the domains your clients visit (e.g. [www.facebook.com](http://www.facebook.com)) as well as any of their applications that use data (e.g. BitTorrent, Skype).

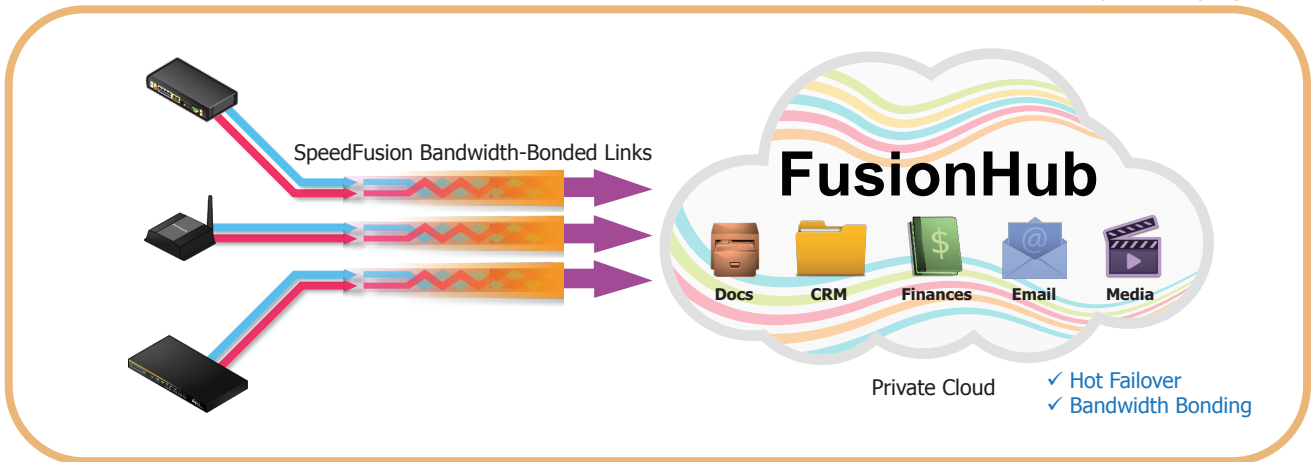
This information can be displayed as a table, pie chart, or client connection diagram. On client connection diagrams, information is made manageable using intelligent filters.



## Deployment Possibilities

### SpeedFusion Bonded Link to Private Cloud

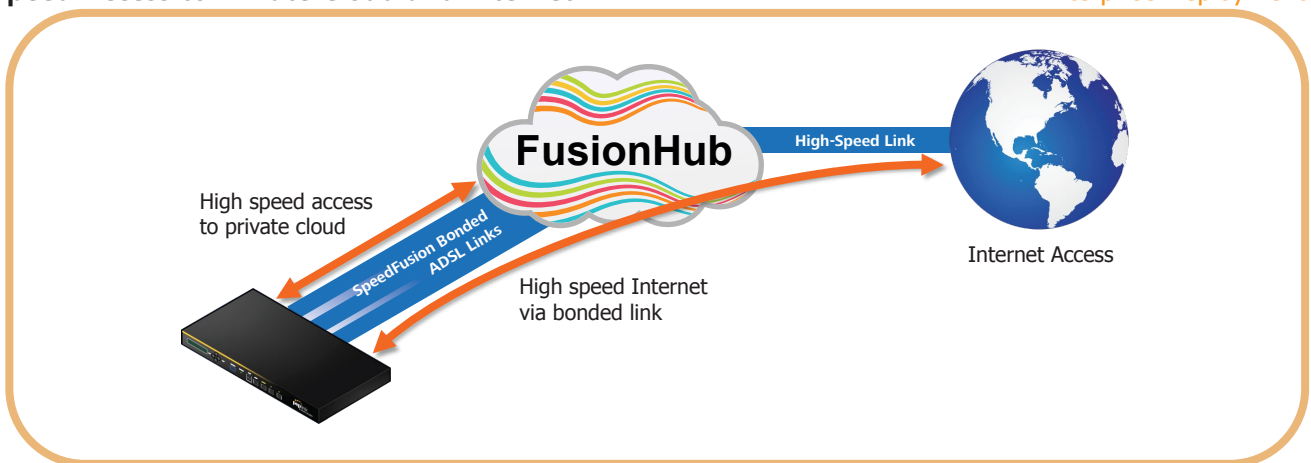
Enterprise Deployment



Enjoy SpeedFusion's increased speed and unbreakable VPN connection while accessing your private cloud.

### High-Speed Access to Private Cloud and Internet

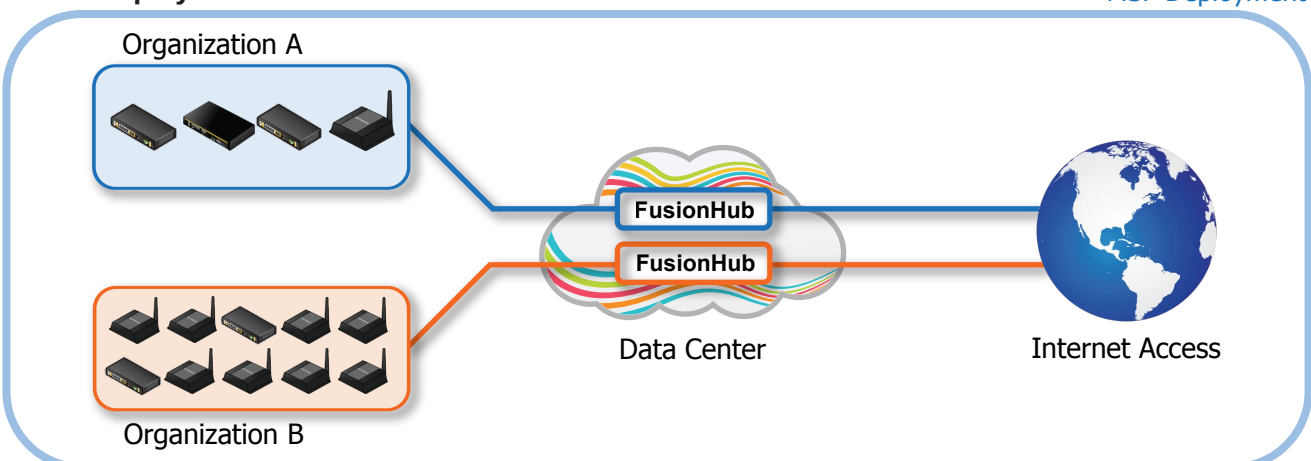
Enterprise Deployment



In addition to enjoying SpeedFusion access to your cloud, you could also use your cloud's Internet connection to browse the Internet at higher speeds.

### Multi-Tenant Deployment

MSP Deployment



Easily provision SpeedFusion VPN connections as a service to individual organizations. Manage your entire network using InControl 2.

## System Requirements

Minimum Requirements:

- 1 Virtual CPU
- 1GB of virtual memory
- 1GB of virtual storage
- Runs on VMware, Citrix XenServer, and VirtualBox