



Intelligent functions to make your security system operations easier and more secure

Key Features

Intelligent Video Motion Detection

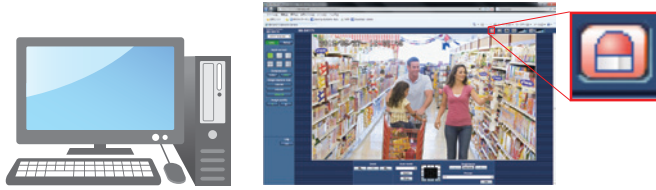
<p>• Intruder detection</p> <p>Detects</p> <ul style="list-style-type: none"> - the motion of objects in the shooting or detection area. <p>Frames and tracks are displayed around the detected moving object in the live image. Up to 8 objects can be detected simultaneously.</p> <p>Crossing Over the fence ▲</p>	<p>• Loitering detection</p> <p>Detects</p> <ul style="list-style-type: none"> - objects loitering for longer than a specified time from 10 sec to 5 min. <p>Objects staying longer than a specified time ▲</p>	<p>• Direction detection</p> <p>Detects</p> <ul style="list-style-type: none"> - objects moving in a specified direction. <p>Objects moving in a specified direction ▲</p>
<p>• Scene change detection</p> <p>Detects</p> <ul style="list-style-type: none"> - interference caused by tampering with the camera, such as a manual change in the camera direction or blockage of the lens with cloth or spray paint. <p>Blockage of the lens with spray paint ▲</p>	<p>• Object detection*</p> <p>Detects</p> <ul style="list-style-type: none"> - an object abandoned or removed in the area. <p>▲ Object(remove) ▲ Object(Left behind)</p>	<p>• Cross line detection*</p> <p>Detects</p> <ul style="list-style-type: none"> - a moving object crosses the specified virtual lines. <p>▲ A person who crosses the virtual line to the specified direction</p>

* Type2 network cameras only

Actions When an Alarm is Detected

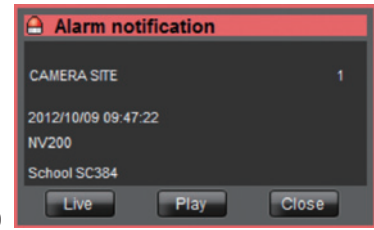
Monitoring

Notification sent to the monitoring screen



Alarm notification sent to the recorder and WV-ASM200 management software

Alarm display in WV-ASM200



Specifications

Intelligent Video Motion Detection

Detection program	Available number of programs	Up to 2
	Title	1 - 20 characters
Detection area	Available number of Detection Areas	Up to 8 detection areas (for each detection program)
	Paint type	Cross line, Quadrangle, Polygon (up to 16 apexes)
Mask area	Available number of Mask Areas	Up to 8 mask areas (for each detection program)
	Paint type	Quadrangle, Polygon (up to 16 apexes)
Detection mode		Intruder / Loitering / Direction / Object* / Cross line*
Direction setup		One of eight directions can be chosen. (Upper, Upper right, Right, Lower right, Lower, Lower left, Left, Upper left)
Scene change		ON / OFF
Cross line setup*		A --> B, B --> A, A <--> B

Advanced settings

Detection sensitivity		1(Low), 2, 3, 4(Middle), 5, 6, 7(High)
Detection sensitivity (Object)*		Low / Middle / High
Detection sensitivity (Scene change)		1(Low), 2(Middle), 3, 4, 5(High)
Scene change detection level		1(Low), 2(Middle), 3, 4, 5(High)
Detection time	Intruder detection time	0.2 s / 0.4 s / 1 s / 2 s / 3 s / 4 s / 5 s / 10 s
	Loitering detection time	10 s / 20 s / 30 s / 1 min / 2 min / 3 min / 5 min
	Direction detection time	1 s / 2 s / 3 s / 4 s / 5 s / 10 s
	Object detection time*	10 s / 20 s / 30 s / 1 min / 2 min / 3 min / 5 min
	Scene change detection time	1 s / 2 s / 3 s / 4 s / 5 s / 10 s
Detection size	Min. size	10 / 20 / 30 / 40 / 50 / 60 / 70 / 80 / 90%
	Max. size	100 / 150 / 200 / 250 / 300%

*Type 2 network cameras only

Compatible models

	Registration Key Type	Product Number
Network Camera	Type1	WV-SF539 / WV-SF538 / WV-SF549 / WV-SF548 / WV-SP509 / WV-SP508 / WV-SW559 / WV-SW558 / WV-SF138 / WV-SW158
	Type2	WV-SFV631LT / WV-SFV631L / WV-SFV611L / WV-SFR631L / WV-SVR611L / WV-SFN631L / WV-SFN611L / WV-SPN631 / WV-SPN611 / WV-SPW631LT / WV-SPW631L / WV-SPW611L / WV-SPW611 / WV-SPN531 / WV-SFV311 / WV-SFV310 / WV-SFR311 / WV-SFR310 / WV-SFN311L / WV-SFN311 / WV-SFN310

Trademarks and registered trademarks

- "i-PRO SmartHD" logo is trademarks or registered trademarks of Panasonic Corporation.

Important

- Safety Precaution: Carefully read the Important Information, Installation Guide and operating instructions before using this product.

- Panasonic cannot be responsible for the performance of the network and/or other manufacturers' products used on the network.


• All TV pictures are simulated.

• Specifications are subject to change without notice.

DISTRIBUTED BY:

Panasonic

<http://security.panasonic.com>

 <http://www.facebook.com/PanasonicNetworkCamera>

(2A-110AA)