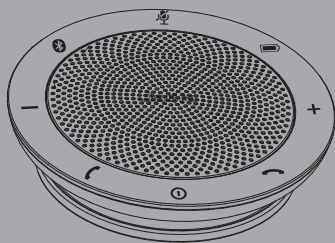


JABRA SPEAK 510™



User Manual

jabra.com/speak510

A BRAND BY

GN Netcom

© 2013 GN Netcom A/S. All rights reserved. Jabra® is a registered trademark of GN Netcom A/S. All other trademarks included herein are the property of their respective owners. The Bluetooth® word mark and logos are owned by the Bluetooth SIG, Inc. and any use of such marks by GN Netcom A/S is under license. (Design and specifications subject to change without notice).

Made in China

MODEL: JABRA SPEAK 510



Bluetooth®

Declaration of Conformity can be found on
www.jabra.com/CP/US/declarations-of-conformity

CONTENTS

1. WELCOME	4
2. SPEAKER OVERVIEW	5
2.1 TURN ON THE JABRA SPEAK 510	
2.2 CHARGING THE JABRA SPEAK 510	
3. CONNECTING	7
3.1 CONNECT TO JABRA LINK 360	
3.2 CONNECT TO MOBILE DEVICE (BLUETOOTH)	
3.3 CONNECT TO BLUETOOTH HEADSET	
3.4 CONNECT TO CORDED HEADSET	
4. HOW TO USE THE JABRA SPEAK 510.....	12
4.1 MULTIPLE CALL HANDLING	
4.2 SWITCH BETWEEN BLUETOOTH DEVICES	
4.3 VOICE GUIDANCE ON/OFF	
4.4 VOICE GUIDANCE	
5. SOFTWARE	16
5.1 JABRA PC SUITE	
5.2 UPDATE JABRA SPEAK 510 FIRMWARE	
6. SUPPORT	17
6.1 FAQ	
6.2 HOW TO CARE FOR YOUR JABRA SPEAK 510	
7. TECHNICAL SPECIFICATIONS	19

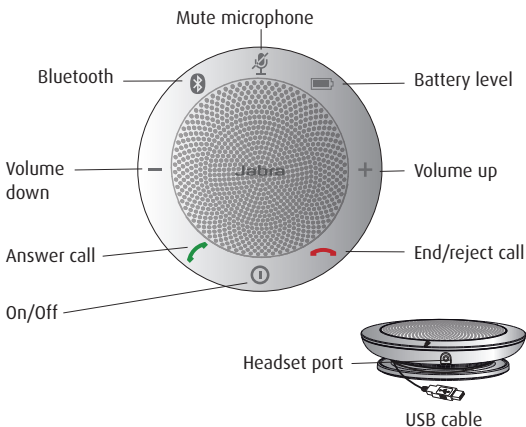
1. WELCOME

Thank you for purchasing the Jabra Speak 510. We hope you will enjoy it!

JABRA SPEAK 510 FEATURES

- Answer, end, reject and mute calls.
- Connect to PC via USB or Jabra Link 360.
- Connect wirelessly to mobile device via Bluetooth.
- Portable.
- Omni-directional microphone.
- Wideband audio for exceptional sound quality.
- LED, audio indicators and voice guidance.

2. SPEAKER OVERVIEW

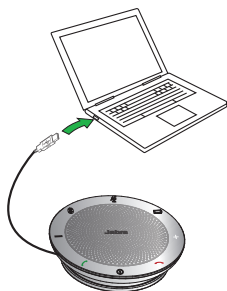


2.1 TURN ON THE JABRA SPEAK 510

- Plug the Jabra Speak 510 USB cable into any available USB port on your PC, or
- Press and hold (2 secs) the On/Off button to turn the Jabra Speak 510 on or off.



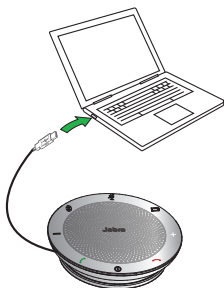
2.2 CHARGING THE JABRA SPEAK 510



Plug the Jabra Speak 510 USB cable into any available USB port on your PC to charge the battery. The battery light is red when charging, and green for 1 minute when fully charged.

3. CONNECTING

1. Plug the Jabra Speak 510 USB cable into any available USB port on your PC.
2. Select the Jabra Speak 510 as the default audio device in Windows Control Panel sound settings, and in your softphone audio settings.



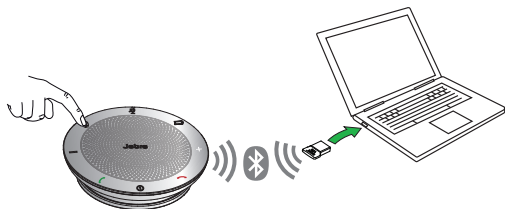
3.1 CONNECT TO JABRA LINK 360

The speakerphone and Jabra Link 360 are pre-paired and ready to use out of the box (Jabra speak 510+ only).

TO CONNECT THE SPEAKER AND JABRA LINK 360:

1. Press and hold (2 secs) the Bluetooth button on the Jabra Speak 510 until the Bluetooth light flashes blue. Release the button when you hear the connection instructions.
2. Plug the Jabra Link 360 into any available USB port on your PC.
3. The connection is established when the light turns solid blue.

NOTE: Ensure that all Bluetooth devices previously connected to the Jabra Link 360 are switched off.



3.2 CONNECT TO MOBILE DEVICE (BLUETOOTH)

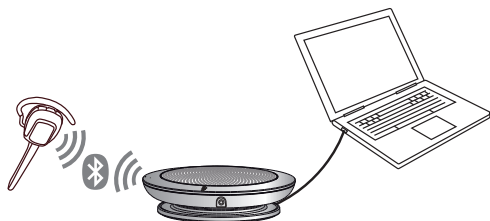
1. Press and hold (2 secs) the Bluetooth button on the Jabra Speak 510 until the Bluetooth light flashes blue. Release the button when you hear the connection instructions.
2. Enable Bluetooth on your mobile device, and select the Jabra Speak 510 from the list of available Bluetooth devices. If prompted for a password enter 0000.



3.3 CONNECT TO BLUETOOTH HEADSET

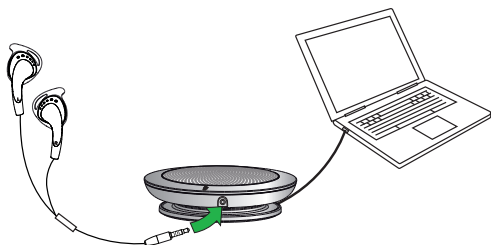
For privacy, a bluetooth headset can be connected to the Jabra Speak 510.

1. Plug the Jabra Speak 510 into any available USB port on your PC.
2. Put the Bluetooth headset into pairing mode (refer to your headset manual for instructions).
3. Press and hold (8 secs) the Bluetooth button on the Jabra Speak 510 until the Bluetooth light flashes blue and then flashes green. Release the button when you hear 'Connect to headset'.
4. The connection is established when the light turns solid blue.

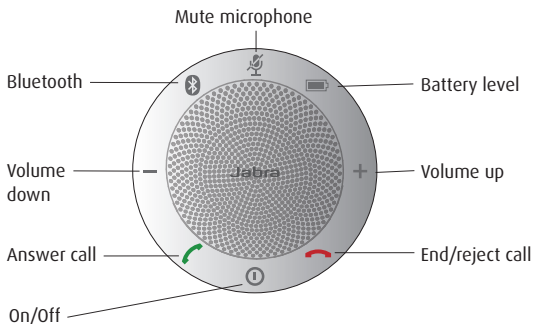







3.4 CONNECT TO CORDED HEADSET



For privacy, a corded headset can be plugged into the Jabra Speak 510 headset port.



4. HOW TO USE THE JABRA SPEAK 510





	On/Off	Press and hold (2 secs) the On/Off button until the lights flash
	Answer call	Tap the Answer call button
	End call	Tap the End/reject call button
	Reject call	Tap the End/reject call button
	Speaker volume	Tap the Volume up or Volume down button
	Battery status	Tap the Battery status button to display the current battery level

	Connect with new Bluetooth device	Press and hold (2 secs) the Bluetooth button to connect with a new Bluetooth device
	Reconnect/disconnect with Bluetooth device	Tap the Bluetooth button to reconnect/disconnect with a Bluetooth device
	Mute microphone	Tap the Mute microphone button

4.1 MULTIPLE CALL HANDLING

The Jabra Speak 510 can accept and handle multiple calls simultaneously.

	Put current call on hold and answer incoming call	Tap the Answer call button
	Switch between held call and active call	Tap the Answer call button
	Reject incoming call	Tap the End/reject call button

4.2 SWITCH BETWEEN BLUETOOTH DEVICES

1. Press and hold the Bluetooth button and tap the Volume up or Volume down button to cycle between the connected devices. The connected devices will be announced.
2. Release the Bluetooth button when the correct device is announced. The Jabra Speak 510 will establish a connection with the device(s). When a connection has been established the device(s) will be announced.



4.3 VOICE GUIDANCE ON/OFF

To turn voice guidance on/off, press and hold (8 secs) the **Mute** button until you hear 'Voice guidance off' or 'Voice guidance on'.

NOTE: Not all voice prompts will be disabled when voice guidance is turned off.

4.4 VOICE GUIDANCE

CLICK TO LISTEN	WHAT YOU HEAR
	Go to the Bluetooth menu on your mobile device and connect to Jabra Speak 510
	Connect to mobile device
	Connect to Jabra Link 360
	Connect to headset
	Connect to two mobile devices
	Connect to both Jabra Link 360 and mobile device
	Connected to mobile device
	Connected to Jabra Link 360
	Connected to headset
	Connected to two mobile devices
	No device found
	Voice guidance on
	Voice guidance off
	Connect to headset. Put your headset in pairing mode and wait for a connection to be established
	Disconnected from Jabra Link 360
	Disconnected from mobile device

5. SOFTWARE

5.1 JABRA PC SUITE

Jabra PC Suite is a collection of software designed to support, manage and enable optimal functionality for Jabra devices. It is highly recommended to download and install Jabra PC Suite.

Download the latest version - jabra.com/pcsuite

5.2 UPDATE JABRA SPEAK 510 FIRMWARE

Firmware updates improve performance or add new functionality to Jabra devices.

TO UPDATE FIRMWARE:

Launch the Jabra Firmware Updater installed with Jabra PC Suite, and follow the firmware updater wizard.

NOTE: The speakerphone must be connected to the PC via USB.

6. SUPPORT

6.1 FAQ

Q I hear crackling noises

A Bluetooth is a radio technology that is sensitive to objects between the Jabra Speak 510 and the connected device. Ensure the Jabra Speak 510 and the connected device are within range (up to 100 meters or 300 feet).

Q I cannot hear anything

- A - Increase the speaker volume.
- Ensure that the Jabra Speak 510 is connected to a device.

Q I am having Bluetooth connection problems

A Check your mobile device's Bluetooth menu and delete/forget the Jabra Speak 510. Re-connect the Jabra Speak 510 to your Bluetooth device following the Bluetooth connection instructions.

Q Will the Jabra Speak 510 support other Bluetooth equipment?

A The Jabra Speak 510 is designed to work with Bluetooth mobile devices. It can also support other Bluetooth devices that can support a headset, hands-free and/or advance audio distribution profile (A2DP).

6.2 HOW TO CARE FOR YOUR JABRA SPEAK 510

- Always store the Jabra Speak 510 with the power off and safely protected.
- Avoid storage at extreme temperatures (above 70°C/158°F or below -40°C/-40°F). This can shorten battery life and may affect operation. High temperatures may also degrade performance.
- Do not expose the Jabra Speak 510 to rain or other liquids.

7. TECHNICAL SPECIFICATIONS

JABRA SPEAK 510	SPECIFICATION
Weight	195 g
Dimensions	D 120 mm x H 33 mm
Microphones	Omni-directional
Speaker	Dynamic, 50 mm
Bluetooth range	Up to 100 m (300 ft), Class 1 Up to 10 m (30 ft), Class 2
Bluetooth version	3.0
Paired devices	Up to 8 trusted devices
Supported Bluetooth profiles	A2DP (v 1.2), Hands Free Profile (v1.6), Headset profile
Talk time	Up to 15 hours
Operating temperature	5°C to 40°C (41°F to 104°F)
Storage temperature	-5°C to 45°C (23°F to 113°F)
Simultaneous Bluetooth connections	2
Bluetooth audio bandwidth	Wideband, A2DP
Pairing passkey or PIN	0000

JABRA LINK 360	DESCRIPTION
Dimensions	W 15.8 mm x L 21.2 mm x H 4.7 mm
Bluetooth range	Up to 100 m (300 ft), Class 1 Up to 10 m (30 ft), Class 2
Bluetooth version	3.0
Paired devices	Up to 8 trusted devices
Supported Bluetooth profiles	A2DP (v 1.2), Hands free profile (v 1.6)
Operating temperature	5°C to 40°C (41°F to 104°F)
Storage temperature	-5°C to 45°C (23°F to 113°F)
Simultaneous Bluetooth connections	1
Bluetooth audio bandwidth	Wideband, A2DP
PC connection	USB 2.0

