



- IP 67-rated enclosure for outdoor usage
- Concurrent 2.4GHz and 5GHz with 2x2 MIMO
- Compliant with 802.11ac WAVE2
- 1 PoE-Out to provide power to IP camera or Wireless AP (P model)
- High RF power for long-distance wireless coverage
- Internal directional antenna for Point-to-Point deployment (D model)
- Up to 256 WLAN clients (Up to 128 per radio)
- AP-Assisted Roaming
- Airtime Fairness
- Band Steering
- Support stand-alone deployment and central management

DrayTek VigorAP 920R Series is an outdoor wireless access point/bridge with internal directional antenna for point-to-point deployment. It is equipped with a Gigabit PoE-Out port to provide connectivity and power for another PoE device. As an AP, VigorAP 920R Series is capable for wireless connection by supporting 802.11ac wave2 standard and providing advanced features, such as AirTime Fairness, Band Steering, and AP-Assisted Roaming.

#### A ROBUST WIRELESS BRIDGE

VigorAP 920R Series offers various operating modes, including access point and universal repeater. It can also be a wireless bridge between two or more wired networks and helps you extend the network to a detached building without wires. Except for the two external antennae, VigorAP 920R Series also includes internal directional 5GHz antenna specialized in point-to-point deployment, therefore can deliver robust and fast connectivity over a long distance.

#### BUILT TO WITHSTAND RAIN, HEAT AND COLD

VigorAP 920R Series is designed to deliver wireless connectivity to the outdoor environments, through heat, rain, snow and any weather conditions. It is also the solution for harsh indoor environments such as factory or warehouse. The IP67 certified enclosure provides VigorAP 920R Series protection against water and dust, and the industrial-grade components give VigorAP 920R Series a wide operating temperature range of -40°C to 70°C.

#### RELIABLE PERFORMANCE FOR DEMANDING NETWORK

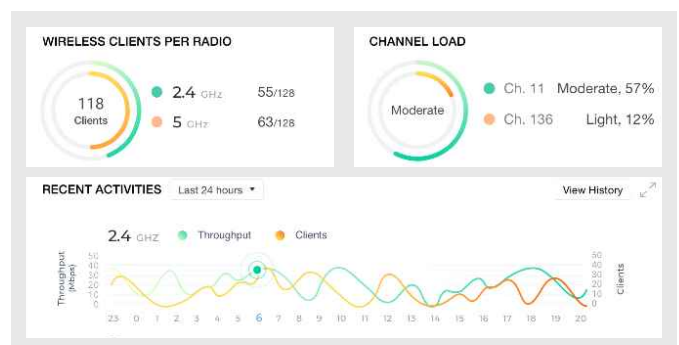
VigorAP 920R Series is compliant with 802.11ac WAVE2, supports dual-band operation and MU-MIMO simultaneous transmission, allows up to 256 concurrent clients (128 per radio). Vigor920R Series has adopted power amplifier and low-noise amplifier to enhance the wireless signal in both transmitting and receiving. It also features technologies to improve the Wi-Fi experience, including AirTime Fairness, Band Steering, and AP-Assisted Roaming to help client handover.

#### DESIGNED FOR EASY DEPLOYMENT

The two PoE-capable Ethernet ports make VigorAP 920R Series be an ideal solution for flexible network deployment. VigorAP 920R Series can receive its electrical power from the Ethernet cable, therefore can be located anywhere and not be limited by the electrical outlet. And the other Ethernet port can provide power as well as the network connection to another PoE-capable device nearby, such as an IP camera.

#### EASY SETUP & MONITORING

VigorAP 920R Series offers a choice of setup methods. It supports stand-alone deployment, for installing just up a few access points only, the configuration can be done directly on the AP's. Network Administrator can configure and maintain numbers of VigorAP 920R Series through DrayTek's centralized management software, VigorACS. Selected models of Vigor Router also provide the feature to push WLAN configuration to the AP automatically once they powered up and connect to the network.



## Hardware Interface

Interface	<ul style="list-style-type: none"> <li>• 1 x 10/100/1000M Base-T PoE-capable RJ-45 Port (PD-in)</li> <li>• 2 x 10/100/1000M Base-T PoE-capable RJ-45 Port (P model)               <ul style="list-style-type: none"> <li>• Port 1: Power over Ethernet (PD in)</li> <li>• Port 2: Power over Ethernet (PSE out)</li> </ul> </li> <li>• 1 x Factory Reset Button</li> </ul>
Built-in Sensor	<ul style="list-style-type: none"> <li>• Temperature sensor</li> <li>• Humidity sensor</li> </ul>
Power Saving	<ul style="list-style-type: none"> <li>• IEEE 802.3az Energy Efficient Ethernet compliant</li> </ul>
Environmental	<ul style="list-style-type: none"> <li>• Operating Temperature: -40°C ~ 70 °C</li> <li>• Storage Temperature: -40°C ~ 85°C</li> <li>• Operating Humidity: 5% ~ 95% non-condensing</li> <li>• IP67 Rated</li> </ul>

## Wireless

Standards	<ul style="list-style-type: none"> <li>• 802.11ac Wave 2</li> <li>• 802.11n</li> <li>• 802.11a</li> <li>• 802.11g</li> <li>• 802.11b</li> </ul>
MIMO	<ul style="list-style-type: none"> <li>• 2 x 2</li> </ul>
WLAN	<ul style="list-style-type: none"> <li>• MU-MIMO (2 clients)</li> <li>• Up to 128 clients per radio</li> <li>• DHCP Server</li> <li>• DHCP Relay Agent</li> <li>• MAC Clone</li> </ul>
SSID	<ul style="list-style-type: none"> <li>• Up to 4 per radio</li> <li>• SSID-based 802.1Q VLAN</li> </ul>
Security	<ul style="list-style-type: none"> <li>• WEP, WEP-802.1x, WPA-PSK, WPA-802.1x, WPA2-PSK, WPA2-802.1x</li> <li>• Hidden SSID</li> <li>• Client Isolation</li> <li>• Access Control per SSID</li> <li>• WPS</li> </ul>
802.1x Authentication	<ul style="list-style-type: none"> <li>• Internal RADIUS Server: PEAP</li> <li>• RADIUS Proxy: PEAP, EAP-TLS</li> </ul>
Performance Optimization	<ul style="list-style-type: none"> <li>• Bandwidth Limit Per Station</li> <li>• Auto-Adjustment Bandwidth Limit when spare bandwidth available</li> <li>• WMM</li> </ul>
Mobile Device Management	<ul style="list-style-type: none"> <li>• Access Control by device type</li> <li>• Policy per SSID</li> <li>• Client OS Statistics</li> </ul>

Load Balancing	<ul style="list-style-type: none"> <li>• Client Limit per radio</li> <li>• Client Limit per SSID</li> <li>• Traffic Limit per radio *</li> <li>• Force Overload Disassociation by RSSI Threshold, Idle Time *</li> <li>(*: controller required)</li> </ul>
Roaming	<ul style="list-style-type: none"> <li>• Fast Roaming (WPA2/802.1x)</li> <li>• AP-Assisted Roaming (Disassociation by Basic Rate threshold, RSSI threshold, RSSI threshold with stronger signal guaranteed)</li> </ul>
Web Portal	<ul style="list-style-type: none"> <li>• Welcome Message</li> <li>• URL Redirection</li> <li>• Button Click Authentication</li> </ul>
Operating Mode	<ul style="list-style-type: none"> <li>• Access Point</li> <li>• Universal Repeater</li> <li>• AP Bridge WDS</li> <li>• AP Bridge Point-to-Point (2.4 GHz only)</li> <li>• AP Bridge Point-to-Multipoint (2.4 GHz only)</li> <li>• Station Infrastructure (2.4 GHz only)</li> </ul>

## Management

Configuration	<ul style="list-style-type: none"> <li>• Web Interface (HTTP, HTTPS)</li> <li>• CLI (Telnet)</li> <li>• SNMP v1, v2c, v3</li> <li>• TR-069 via VigorACS</li> <li>• Vigor Router AP Management</li> <li>• Configuration File Export &amp; Import</li> </ul>
Firmware upgrade	<ul style="list-style-type: none"> <li>• HTTP</li> <li>• TR-069 via VigorACS</li> <li>• Vigor Router AP Management</li> </ul>
Diagnostics Tool	<ul style="list-style-type: none"> <li>• Syslog</li> <li>• Speed Test</li> <li>• AP Discovery</li> <li>• WLAN Statistics</li> <li>• Station Statistics</li> <li>• Interference Monitor</li> </ul>

	PoE Out	Directional Antenna
VigorAP 920RPD	•	•
VigorAP 920RP	•	
VigorAP 920R		

