

700-960MHz 3dBi/1700-2700MHz 7dBi OMNI MIMO ANTENNA x2+CELF200(10mtr)+SMA-M

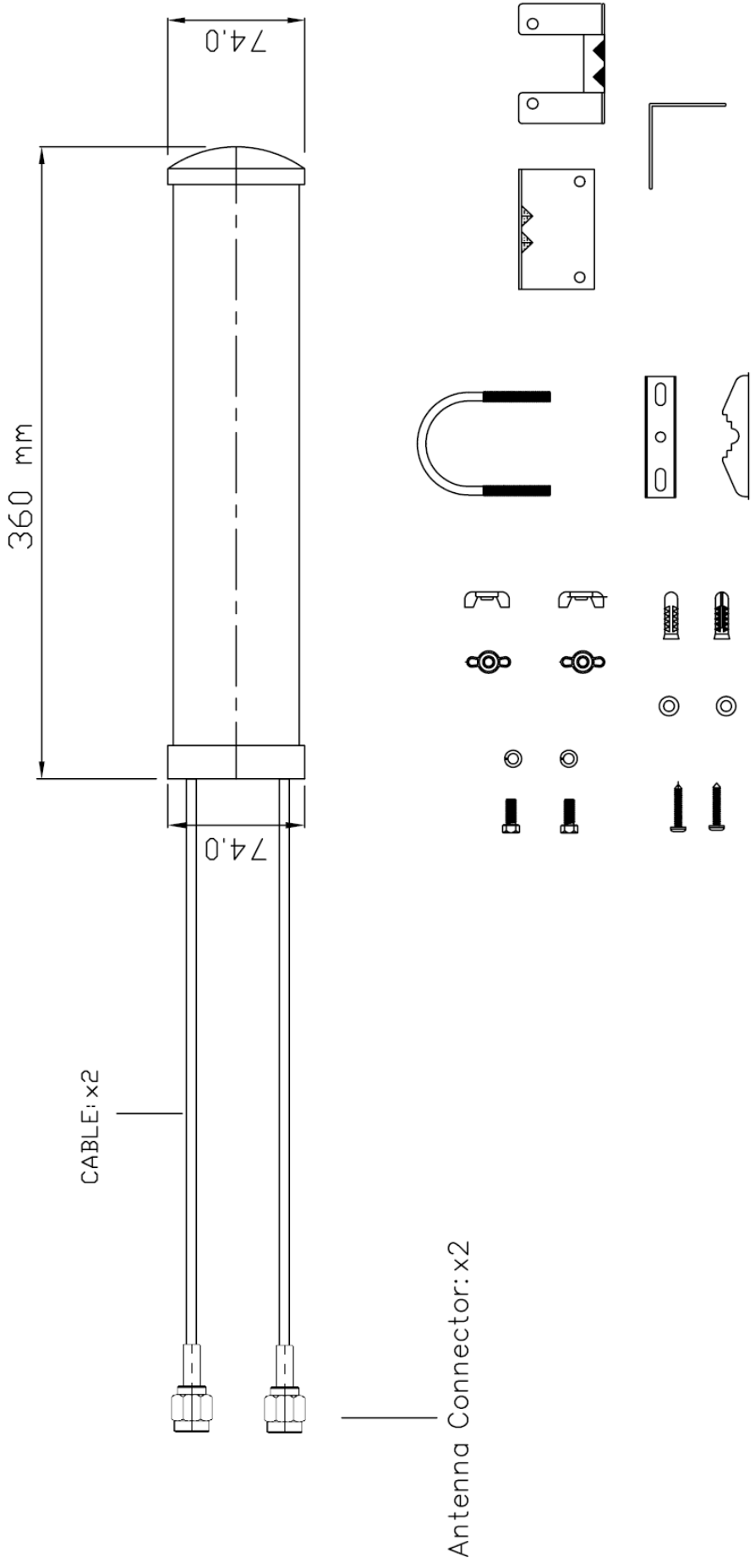


Specifications/Special Features :

This antenna is designed for  
LTE/GSM/WCDMA/UMTS wireless communications

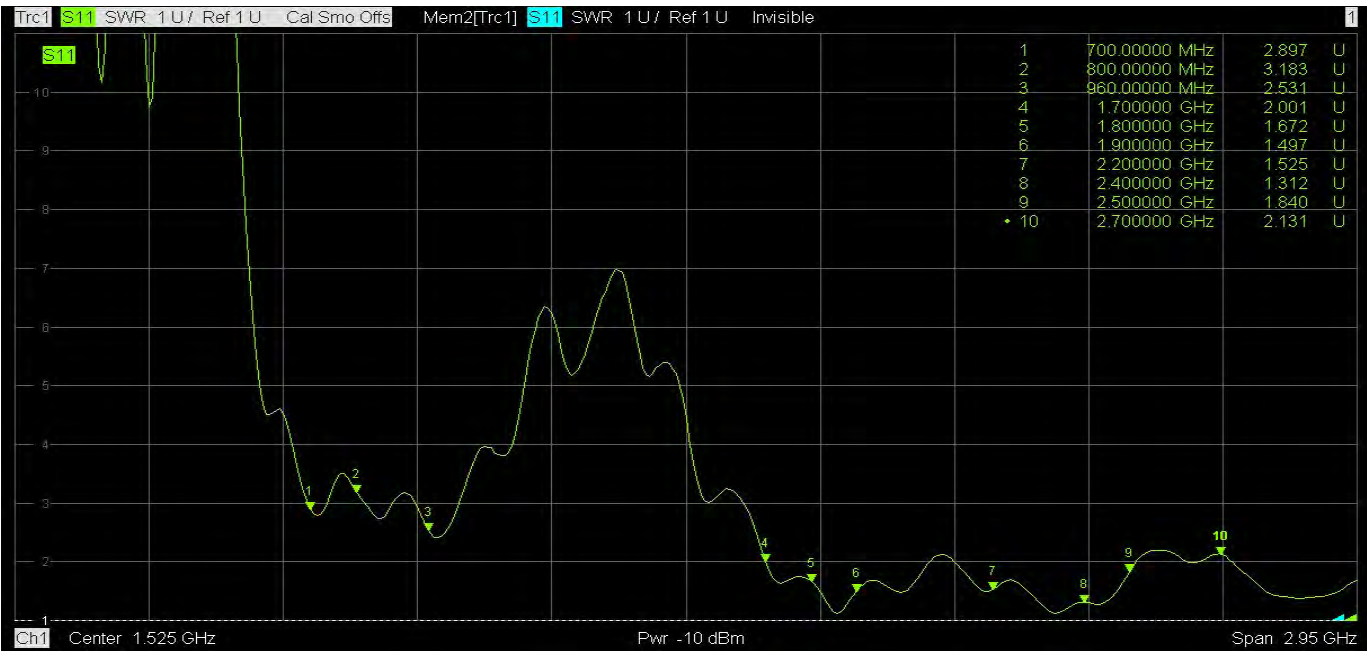
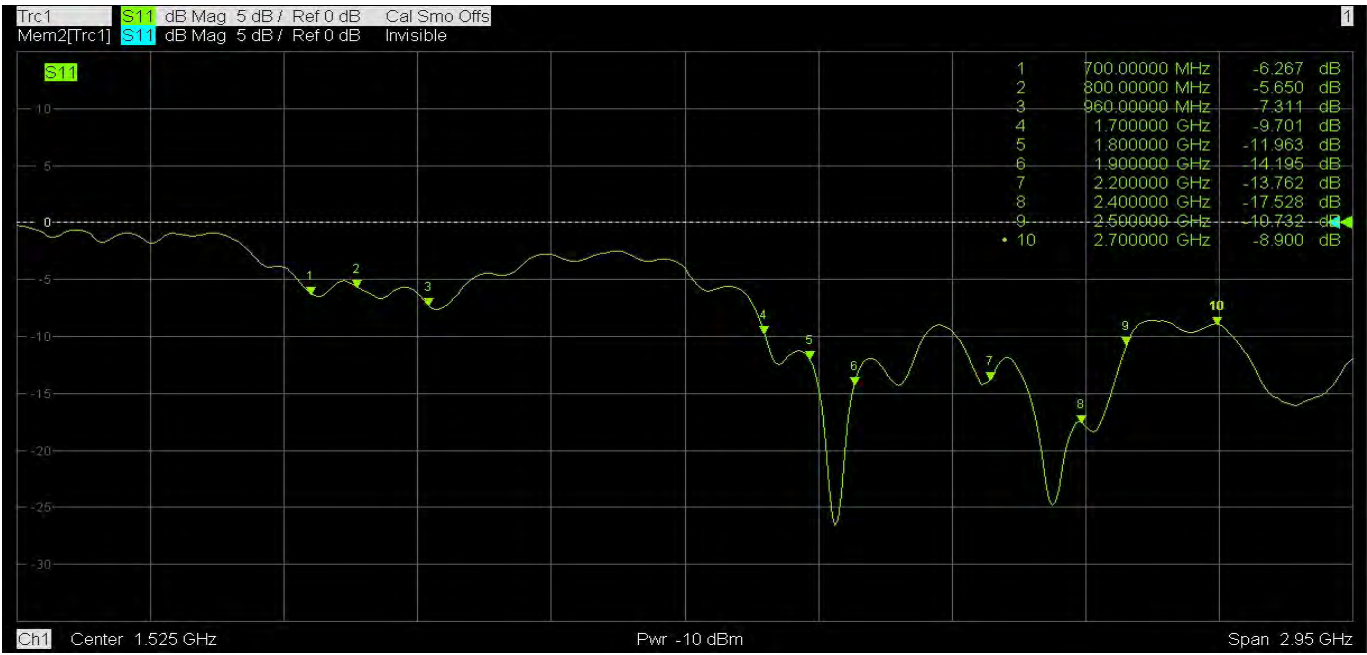
Specification	
Model No.	20-MIMO-OM-0727
Frequency	700-960MHz /1700-2700MHz
Gain (dBi)	700-960MHz 3dBi / 1700-2700MHz 7dBi
Antenna Type	OMNI
Polarization	Vertical
Beam width deg.	Horz.360° Vert.60°
V.S.W.R.	<=3.2
Temperature	-30°c ~ +70°c
Antenna Connector	SMA-M x2
Antenna Cable	CELF200 Length=10Mtr x2
Dimensions	L360×W74XH74 mm
Mounting	U-bolts
Wind load	120Km/h
Weight	650g

700-960MHz 3dBi/1700-2700MHz 7dBi OMNI MIMO ANTENNA

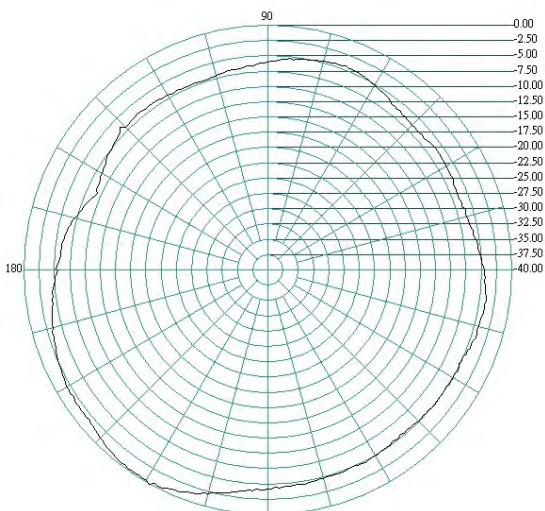


1	FREQUENCY RANGE : 700-960MHz/1700-2700MHz	7	LENGTH : L360xW74xH74 mm
2	GAIN : 700-960MHz 3dBi/1700-2700MHz 7dBi	8	Antenna Cable : x2
3	TYPE : OMNI	9	Antenna Connector : x2
4	POWER HANDLING : 100W	10	
5	POLARIZATION : LINEAR VERTICAL	11	
6	VSWR : <=3.2	12	

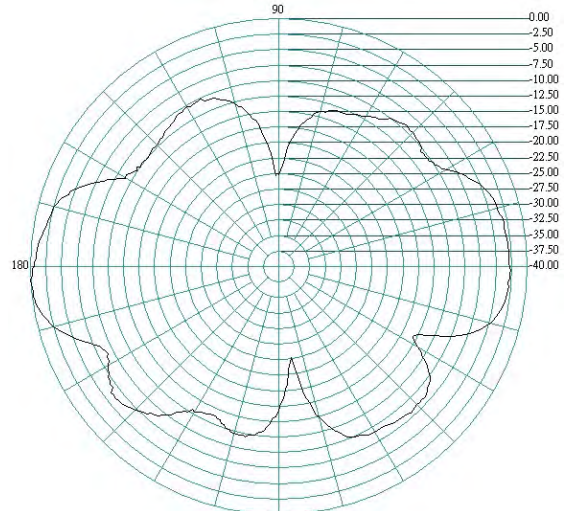
# ANTENNA 1



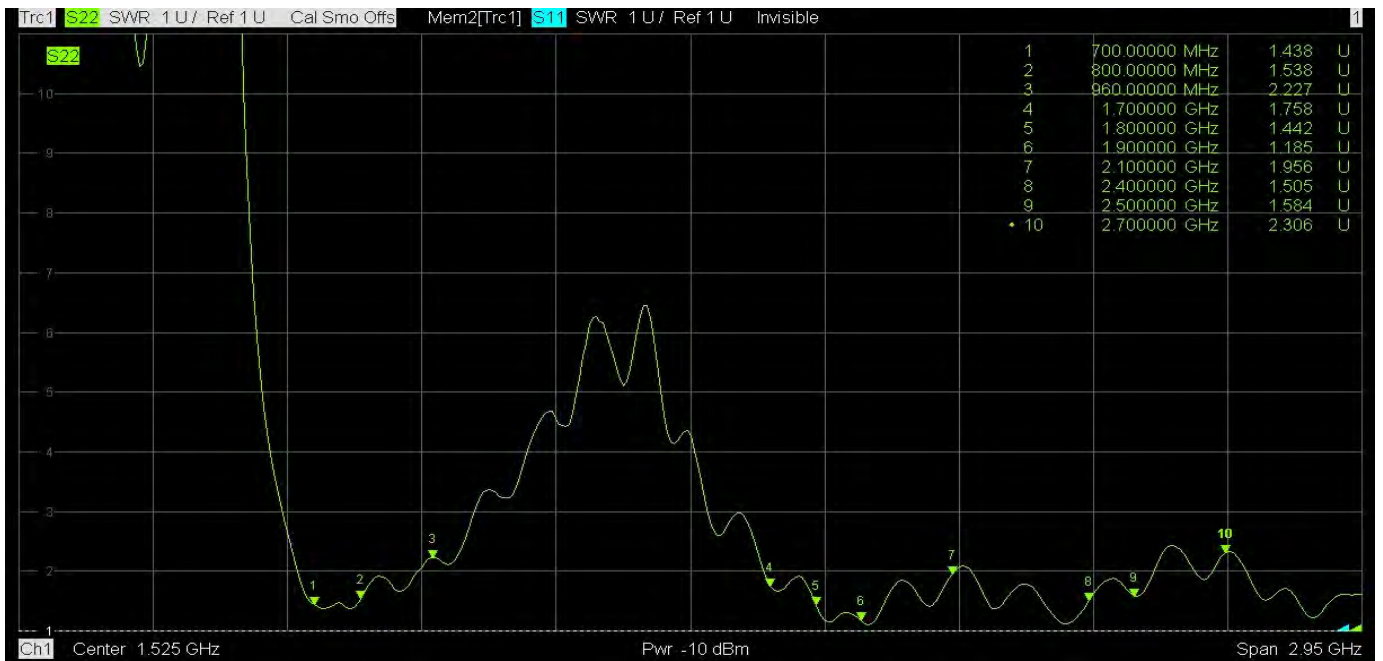
H-PLANE



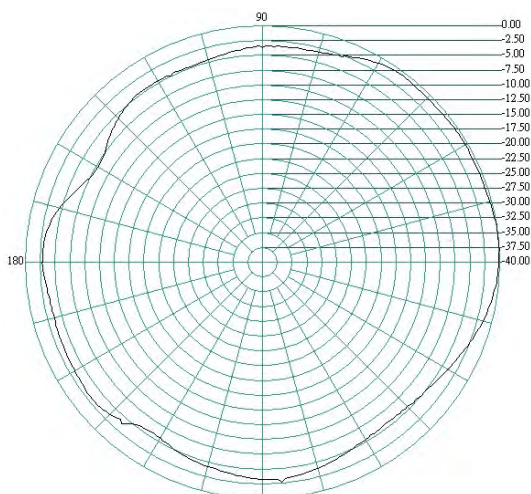
E-PLANE



# ANTENNA 2



H-PLANE



E-PLANE

