

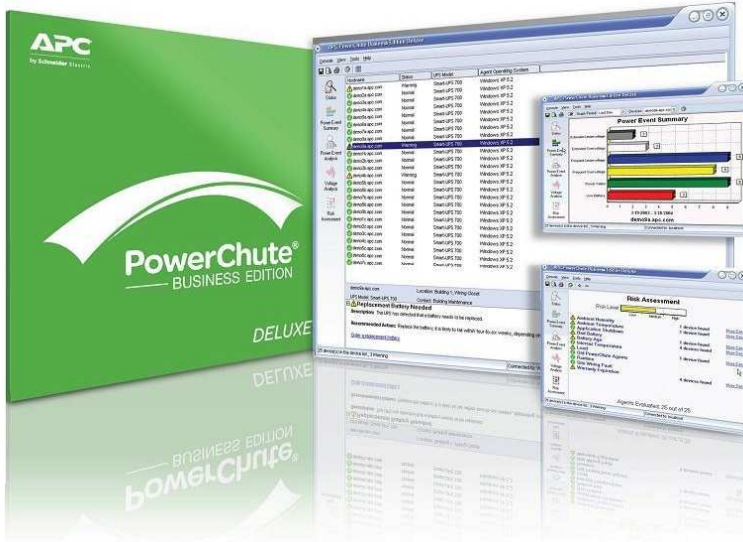
# PowerChute™ Business Edition

UPS management, graceful shutdown and energy reporting for up to 25 servers and workstations using dedicated serial or USB connections

Millions of protected customers!



**Ships with Smart-UPS™  
5kVA & below**



PowerChute Business Edition software provides UPS management, safe system shutdown and innovative energy reporting capabilities. Energy usage, cost and CO<sub>2</sub> reporting provides a greater understanding of the energy consumed by IT equipment enabling improved energy efficiency. Advanced analysis features help to identify the causes of potential power-related problems before they occur; ensuring the health of your protected equipment.

**64% of APC Smart-UPS™ customers  
install and use.**



- Graceful system shutdown
- Outlet aware shutdown
- Scheduled shutdowns
- Fault notifications
- Energy usage reporting
- Energy costing
- CO<sub>2</sub> emissions monitoring
- Centralized monitoring
- Risk assessment reporting
- Power event summary
- Voltage analysis
- Recommended actions
- Data and event logging

Test Drive a PowerChute Business Edition demo at;  
<http://testdrive.apc.com>

**APC™**  
by Schneider Electric

# PowerChute™ Business Edition Features

## Graceful System Shutdown

Unattended shutdown in the event of an extended power outage to help protect against data corruption and costly equipment damage.

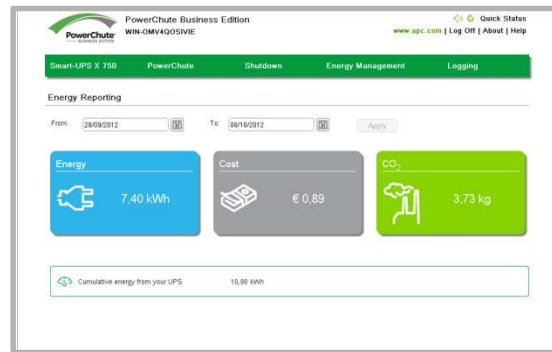
- Different schedule combinations for different outlet groups
- Sequenced shutdown of outlet groups
- Load shedding options to conserve runtime
- Option to run command files to shut down applications



## Energy Reporting

Energy usage, cost and CO<sub>2</sub> reporting of protected IT equipment enables improved energy understanding and greater efficiency. The ability to update energy costs as they change increases reporting accuracy.

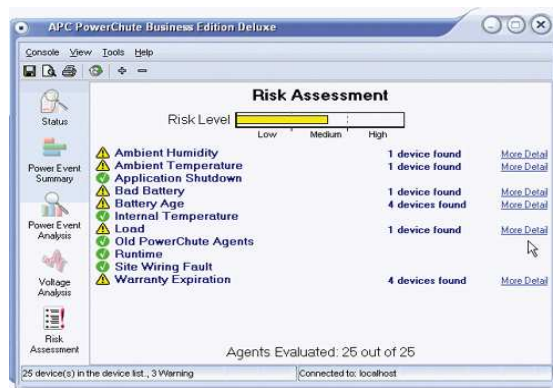
- Fact-based understanding of energy usage
- Associated energy cost reporting of protected equipment
- Environmental impact monitoring of CO<sub>2</sub> emissions



## Centralized UPS Management

Monitor up to 25 Smart-UPS using advanced analysis features to help identify the causes of potential availability or power-related problems before they occur.

- Risk assessment reporting
- Fault notifications
- Power event analysis
- Recommended actions
- Data and Event logging



# Features and Benefits

Protection	
Operating System Shutdown	Helps to prevent data corruption by performing graceful, unattended operating system shutdown in the event of an extended power outage.  Option to run command files for application shutdown if required.
Advanced Scheduled Shutdown and Reboot*	Customize schedules to turn off different outlet groups for event driven or scheduled shutdowns.  Shut down & reboot different outlet group combinations for different schedules.
Load Shedding*	Turn off select outlet groups in a pre-determined sequence to shed less critical equipment and conserve runtime.
Sequenced Shutdown and Restart*	Configure outlet groups to shut down and turn on in a pre-determined order.
Outlet Group Control*	Turn on/off, reboot or shut down select outlet groups to save dispatching technicians to remote locations.
Energy Management	
Energy Usage Reporting	Fact-based reporting of the energy usage of your protected equipment.
Energy Costing	Understand the cost of powering your protected equipment.
CO <sub>2</sub> Emissions Reporting	Monitor the environmental impact of powering your protected equipment.
Availability	
Risk Assessment Summary	Maximize uptime by identifying potential threats to equipment availability such as aging batteries or insufficient runtime.
Power Event Summary	Analyze power by pinpointing frequent or extended under and over voltages. Alerts for power situations that require attention.
Power Analysis Graph	Graph power and UPS events by time of day or week to easily identify periodic, recurring power disturbances.
Manageability	
Multiple Smart-UPS Management	Customize your UPS status overview to centrally display parameters such as battery replacement date and runtime remaining.
Recommended Actions	Intelligent alarm descriptions coupled with recommended resolutions reduces the need for training and time to repair.
Initial Set-Up Wizard*	Enables ease of configuration so that IT equipment is protected as quickly as possible.
Smart Battery Management*	Battery replacement date and Replacement Battery Cartridge number available via software user interface with seamless link to order required RBC's online.

\*Next Generation Smart-UPS with Outlet Groups only

## PowerChute Business Edition operating system support:

For the latest information, view the compatibility chart on the APC website at: <http://www.apc.com/wp/?um=100>

To download PowerChute Business Edition, go to:  
<http://www.apc.com/products>

