

# HIVEMANAGER CLASSIC ONLINE

## Network Management System

Aerohive Networks **HiveManager Classic NMS** is a cloud-enabled enterprise-class management system for Aerohive networking products. HiveManager Classic offers the same simple policy creation, firmware upgrades, and centralized monitoring options as the on-premises version of HiveManager<sup>1</sup>, however, without the need to deploy another device in your network. HiveManager Classic is hosted within secure Tier IV SAS 70 Type II data centers, with scheduled backups and disaster recovery capabilities.

HiveManager Classic is designed to make it cost effective to start small and grow a network with no upfront costs beyond the Aerohive networking devices. HiveManager Classic can be deployed in two different versions, Express and Enterprise. Express, designed for smaller,

wifi-only deployments, streamlines the interface without compromising enterprise-class features. Enterprise offers the full capabilities of the HiveManager platform for larger organizations with sophisticated policy requirements. HiveManager Classic allows administrators to start with Express and seamlessly migrate to Enterprise for no additional fee.

HiveManager Classic also includes a portal called "MyHive," which provides single sign-on access to Aerohive resources such as HiveManager Classic, support forums, and a redirector server, which manages and correlates Aerohive device assignments to HiveManager Classic instances. Customers access their own HiveManager Classic instance, and partners can use the MyHive system to keep track of many instances for their customers.

### FEATURES & BENEFITS

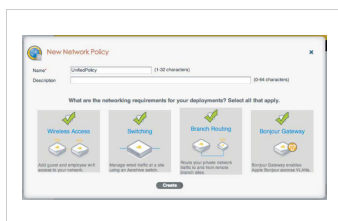
Bringing up a network of Aerohive devices is as simple as plugging them in and browsing to the HiveManager Classic address. The Aerohive devices are pre-provisioned to connect to HiveManager Classic using the secure CAPWAP-DTLS protocol, which traverses NAT and firewalls. This means that the Aerohive devices will automatically connect and register with the customer's account in HiveManager Classic – enabling configuration from any browser. With HiveManager Classic, it is possible to bring up an entire enterprise-class network in just a few minutes.

*HiveManager Classic offers other key benefits:*

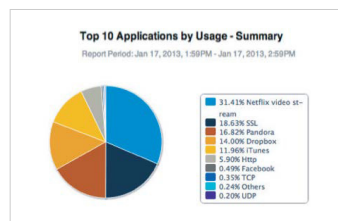
- Unified policy, configuration, and reporting with contextual awareness for wireless, routing, switching, VPN, IP address management, and security policies
- Customizable dashboard with application visibility and control based on user identity
- Plug and play deployment – administrator plugs in the devices and browses to the interface
- No appliance to install, configure, upgrade, or patch

- Green – no rack space, cooling, or power requirements
- Lower cost of entry – eliminate large upfront CAPEX with flexible OPEX plans
- Integrated tools like a Planner, Packet Capture and Client Tracker enable easy scoping, deployment and troubleshooting without additional expense
- Web-based robust application interface allows for managing Aerohive devices from anywhere
- Spectrum analysis to detect and identify non-wi-fi sources of interference at 2.4GHz or 5GHz
- Client-device and Operating System reporting with top clients by usage, peak trends per SSID, and client distribution by Aerohive device
- Powerful device templates and device classification tags allow applying custom configurations across device groups based on hierarchy, location, or function.

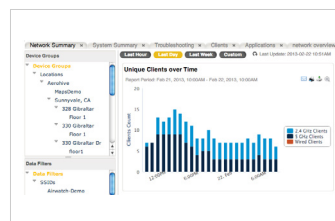
### HIVEMANAGER CLASSIC – QUICK VIEW



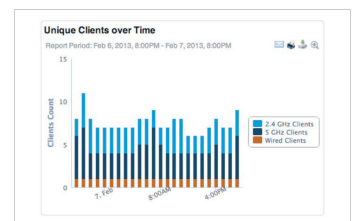
Configure wireless, switching, routing, and services in a single unified policy with a cohesive workflow.



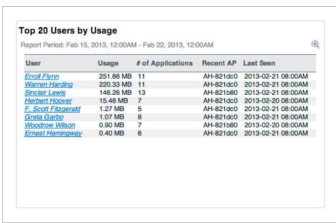
Optimize user experience by harnessing the power of real-time application visibility and policy enforcement at the network edge.



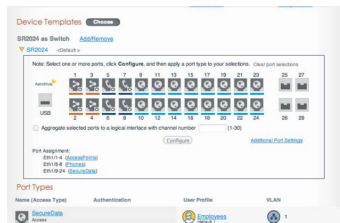
Personalize dashboards with customizable widgets and contextual filters that enable detailed network visibility across your deployment.



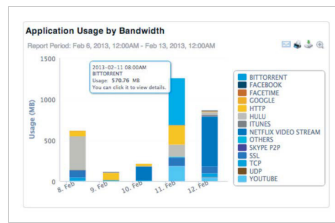
Display unified wired and wireless client information to aid in calculating total number of connected devices on your network.



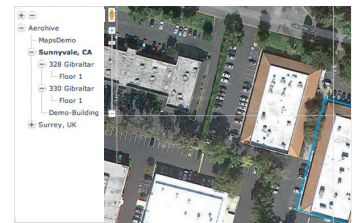
Monitor user activity and create policies based on available context to ensure quality experience on any device.



Create powerful templates to standardize configuration across your devices and make exceptions when necessary.



View detailed application usage information across your entire network and see exactly how valuable bandwidth is being consumed.



Design / monitor your network using topology maps with integrated aerial views and floor planning; real-time heat maps show wireless coverage.

## PRODUCT FEATURES

### Easy Administration

- Online management platform can be configured in minutes
- Grows with your deployment; cost-effectively scales from one device to thousands
- Web-based administration with HTML5-enhanced GUI
- Single sign-on access via MyHive provides access to HiveManager Classic, support forums, and redirector

### Simple Central Management

- Unified policy, configuration, and management for thousands of Aerohive devices
- Powerful policy templating feature enables updates to groups of APs, routers, and switches with a few clicks
- Simple centralized firmware upgrades with distributed download functionality decrease WAN utilization and download time
- Staged configuration and image updates ensure devices are updated when they reconnect to HiveManager
- Powerful device templates and device classification tags allow applying custom configurations across device groups based on hierarchy, location, or function

### Security and Privacy

- Customer and network data is private and secure
- No customer traffic traverses Aerohive's network

### Reliability

- Multiple SAS 70 Type II, Tier-4 data centers for regional access and data privacy
- High availability redundancy and 24x7 monitoring Zero-Touch Config Installation and Deployment
- Once plugged in, devices will automatically connect to the cloud for provisioning
- The staging server redirects Aerohive devices to the right HiveManager Classic account or a customer's on-premise HiveManager
- Auto-Provisioning with Delegated Remote Deployment automatically configures new devices

### Granular Control

- Application QoS and Firewall with detailed user and device context-based policies
- Configuration of cloud proxy to split Internet and corporate VPN traffic with integration to Websense SaaS
- Configuration of L2 and L3 IPsec VPNs
- Automatic and flexible IP address allocation and distribution across entire remote branch network
- TeacherView Application included to monitor and Redirect student wireless clients during class time

### Reporting and Monitoring

- Dashboard widgets organized into pre-defined or customizable perspectives
- Layer 7 application dashboard and reports by usage, clients, users, location, and SSID
- Configuration audit capabilities ensure all configurations are up to date
- PCI 3.0 Compliance Reporting
- Bandwidth usage, client, user activity, OS distribution, and SLA compliance reports
- Rogue and external AP and clients collection and correlation
- Real-time monitoring of alarms and events
- Subscription and support license status summary

### RF Visualization

- Network maps with integrated aerial views and automatic floor planning enable easy visualization of topology and status
- Real-time heat-maps show RF propagation
- State-of-the-art Planning Tool with aerial maps, multi-floor auto-placement, coverage maps, and option to clone buildings and floors
- Built-in client and rogue location detection and placement on a floorplan
- Geo-coded topology hierarchy with automatic area maps
- Spectrum analysis to detect and identify sources of interference

## PRODUCT SKUs

SKU	DESCRIPTION
AH-HMOL-XXX-1YR	HiveManager Classic Online Enterprise for 1 Aerohive device for 1 year – includes software subscription and customer portal access
AH-HMOL-XXX-3YR	HiveManager Classic Online Enterprise for 1 Aerohive device for 3 years – includes software subscription and customer portal access
AH-HMOL-XXX-5YR	HiveManager Classic Online Enterprise for 1 Aerohive device for 5 years – includes software subscription and customer portal access

