



Quick Installation Guide Outdoor Access Point / Client Bridge

ENH500-AX | EnStation 6

ENH500-AX



Device*2



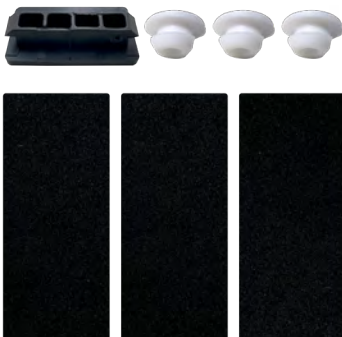
PoE Adapter*2



Quick Installation Guide



Power Cord*2



Waterproof*2



Screw Set*2



Adhesive Label



Pole Mounting Strap*2

EnStation 6



Device *2



PoE Adapter*2



Quick Installation Guide



Sealing nut*2



Bracket*2



Power Cord*2



Dynamic Stick*2



Screw Set*2



Pole Mounting Strap*2

Minimum Requirements

Broadband Internet Service

(Cable or DSL Modem)

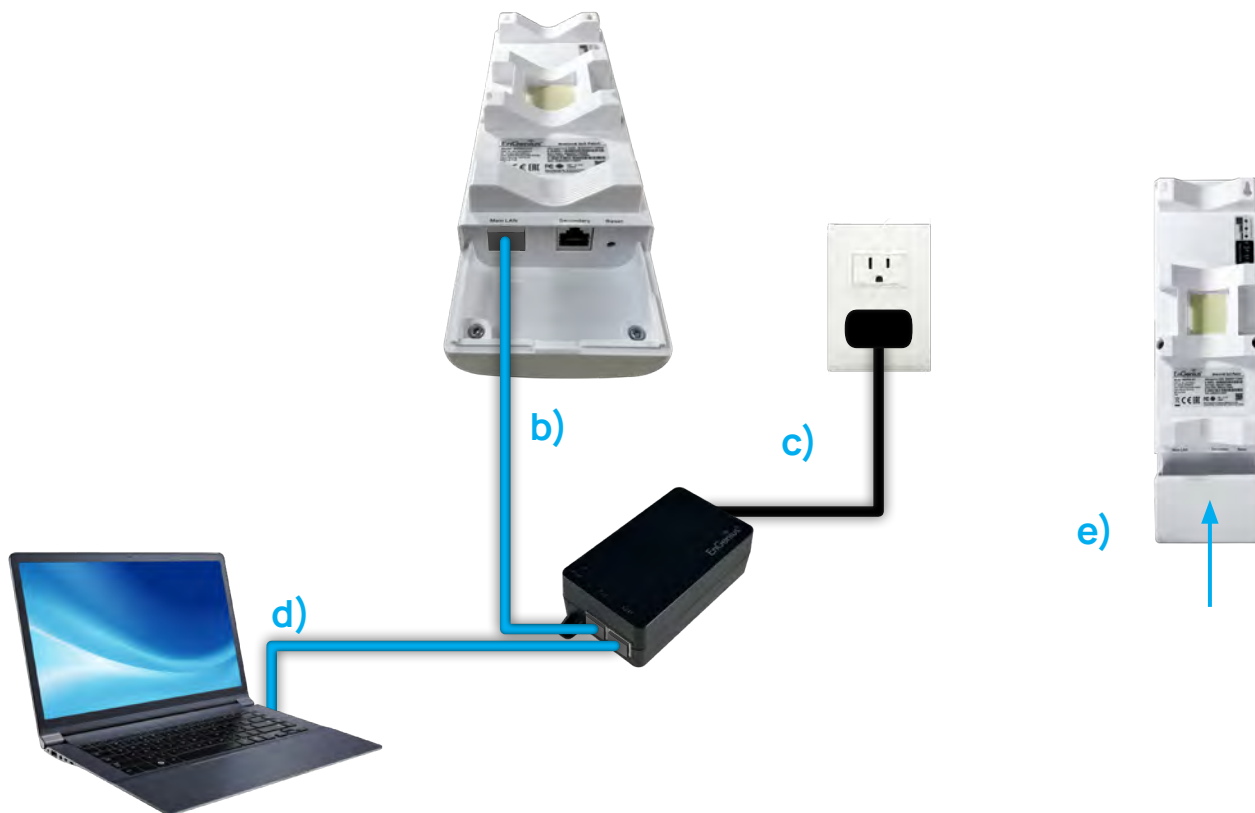
Internet Browser

(Internet Explorer, Safari, Firefox, Chrome, Edge)

1 - Connecting the Device

ENH500-AX

- Remove the rear bottom panel.
 - Connect one end of the Ethernet Cable into the LAN(PoE) port of the AP/Bridge and the other end to the PoE Port on the PoE Adapter.
 - Connect the Power Cord with the PoE Adapter and plug the other end into an electrical outlet.
 - Connect the second Ethernet Cable into the LAN port of the PoE Adapter and the other end to the Ethernet Port on the computer.
 - Place the panel removed from step A back into the device.
- Note: The device should ONLY be powered via Ethernet Cable connected to the included PoE Adapter.



EnStation 6

- Remove the rear bottom panel .
- Connect one end of the Ethernet Cable into the LAN(PoE) port of the CPE and the other end to the PoE Port on the PoE Adapter.
- Connect the Power Cord to the PoE Adapter and plug the other end into an electrical outlet.
- Connect the second Ethernet Cable into the LAN port of the PoE Adapter and the other end to the Ethernet Port onto the computer.
- Place the panel removed form step "a" back into the device.

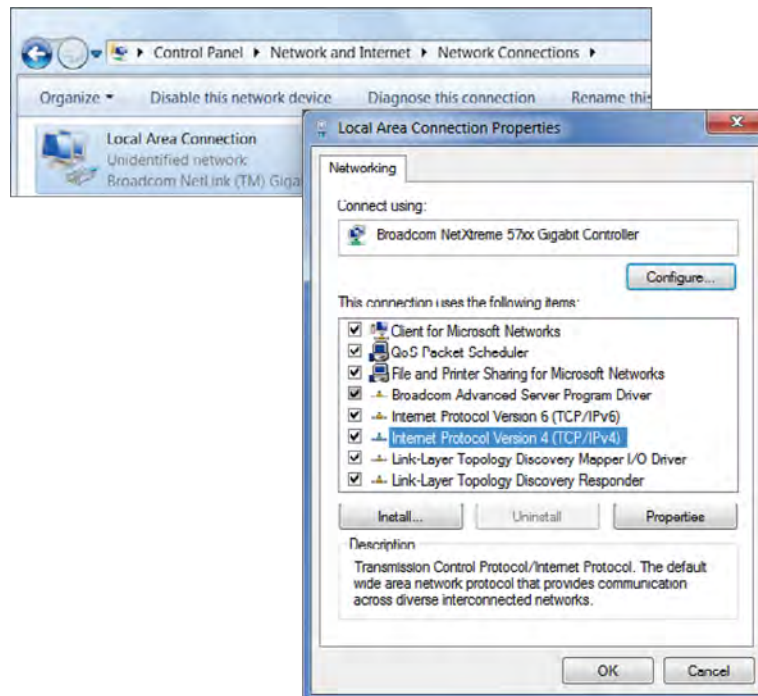
• Note:

- The device should ONLY be powered via Ethernet Cable connected to the included PoE Adapter, EnStation 6 support Proprietary 24V/54V PoE input.
- The 2nd Ethernet Port of the device can supply the 802.3af power source when used with the included PoE Adapter.

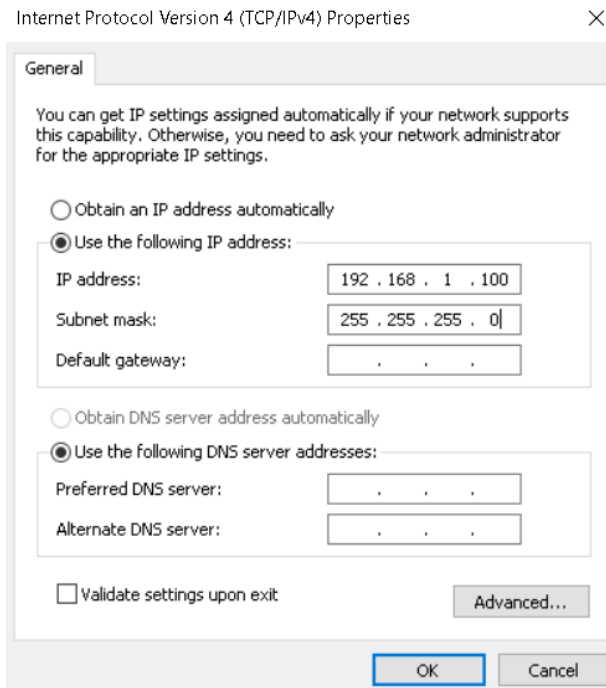


2 - IP Address Configuration

- a. Once your computer is on, ensure that your TCP/IP is set “ON” or “Enabled”. Open **Network Connections** and then click Local Area Connection. Select **Internet Protocol Version 4 (TCP/IPv4)**.

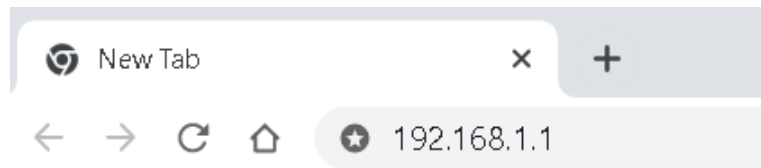


- b. If your computer is already on a network, ensure that you have set it to a Static IP Address on the interface. (Example: 192.168.1.10 and the Subnet Mask address as 255.255.255.0).

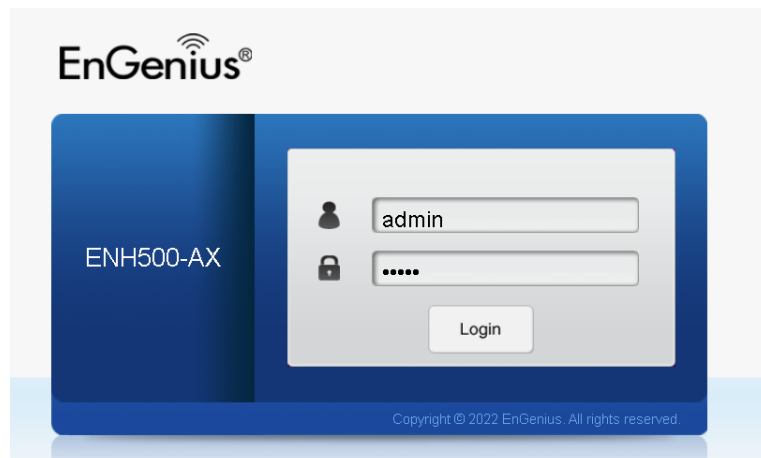


3 - Device Setup

- a. In the address bar of the web browser, enter **192.168.1.1** and hit enter. To configure the device, open a web browser.



- b. A long screen will appear. By default, the user-name of the device is **"admin"** and the password is **"admin"**. Enter the current username and password of the device and then click **Login**.



- Note: The model name on login screen depends on the product you are using.
- c. You can also use the EnWiFi App and connect to the management SSID which is on the device label and GUI to configure the device. The default Wi-Fi password is **12345678**.

4 - Switching Modes

Configure on GUI

- a. The device can operate in the following modes:
 - Access Point, Client Bridge, WDS AP, WDS Station.

EnGenius® English

ENH500-AX AX3600 Dual Band Indoor Ceiling Mount Access Point Changes: 0 Reset Logout

Overview

- Device Status
- Connections
- Realtime

Network

- Basic
- Wireless

Management

- Advanced
- Time Zone
- WiFi Scheduler
- Tools

System Manager

- Account
- Firmware
- Log

Device Information

Device Name	ENH500-AX
Serial Number	22B0XC411WH3
MAC Address	
- LAN	88:DC:97:13:39:B0
- Wireless LAN - 5GHz	88:DC:97:13:39:B2
Country	USA
Current Local Time	Wed Feb 15 20:00:14 2023
Uptime	0h 54m 56s
Firmware Version	v3.10.1_c
Device Version	1.0
Management VLAN ID	Untagged
Registration Check Code	

Memory Information

Total Available	203368 kB / 381892 kB (53%)
Free	134384 kB / 381892 kB (35%)
Cached	52208 kB / 381892 kB (13%)
Buffered	16776 kB / 381892 kB (4%)

- Note: The model name on login screen depends on the product you are using.

b. Click on the Wireless link under the Network and setup the Operation Mode.

English

ENH500-AX AX3600 Dual Band Indoor Ceiling Mount Access Point Changes: 0 Reset Logout

Overview

- Device Status
- Connections
- Realtime

Network

- Basic
- Wireless

Management

- Advanced
- Time Zone
- WiFi Scheduler
- Tools

System Manager

- Account
- Firmware
- Log

Wireless Settings

Device Name	ENH500-AX
Country / Region	USA
5GHz (ax/ac/n/a)	
Operation Mode	Access Point <input type="checkbox"/> Green
WDS	Station <input type="checkbox"/> Enable
Channel HT Mode	Repeater
Channel	Configuration
Transmit Power	Auto
Bit Rate	Configuration
Client Limits	<input checked="" type="radio"/> Enable <input type="radio"/> Disable 127
RSSI Threshold	<input type="radio"/> Enable <input checked="" type="radio"/> Disable -85 dBm (Range: -60dBm ~ -100dBm)
AP Detection	Scan
Distance (0-30km)	1 (0.6miles)

- It may take up to 90 seconds for device to initially power up.

Configure on EnWiFi App

c. Use EnWiFi App, open configure Wireless to setup the Operation Mode.

WIRELESS NETWORK SYSTEM

Country USA

Operation Mode Access Point

EnJet

Wireless

SSID

Security WPA2-PSK

VLAN ID 22

Wireless Traffic Shaping

Download Limit Per User 500 Mbps

Upload Limit 500 Mbps

Distance 2 KM

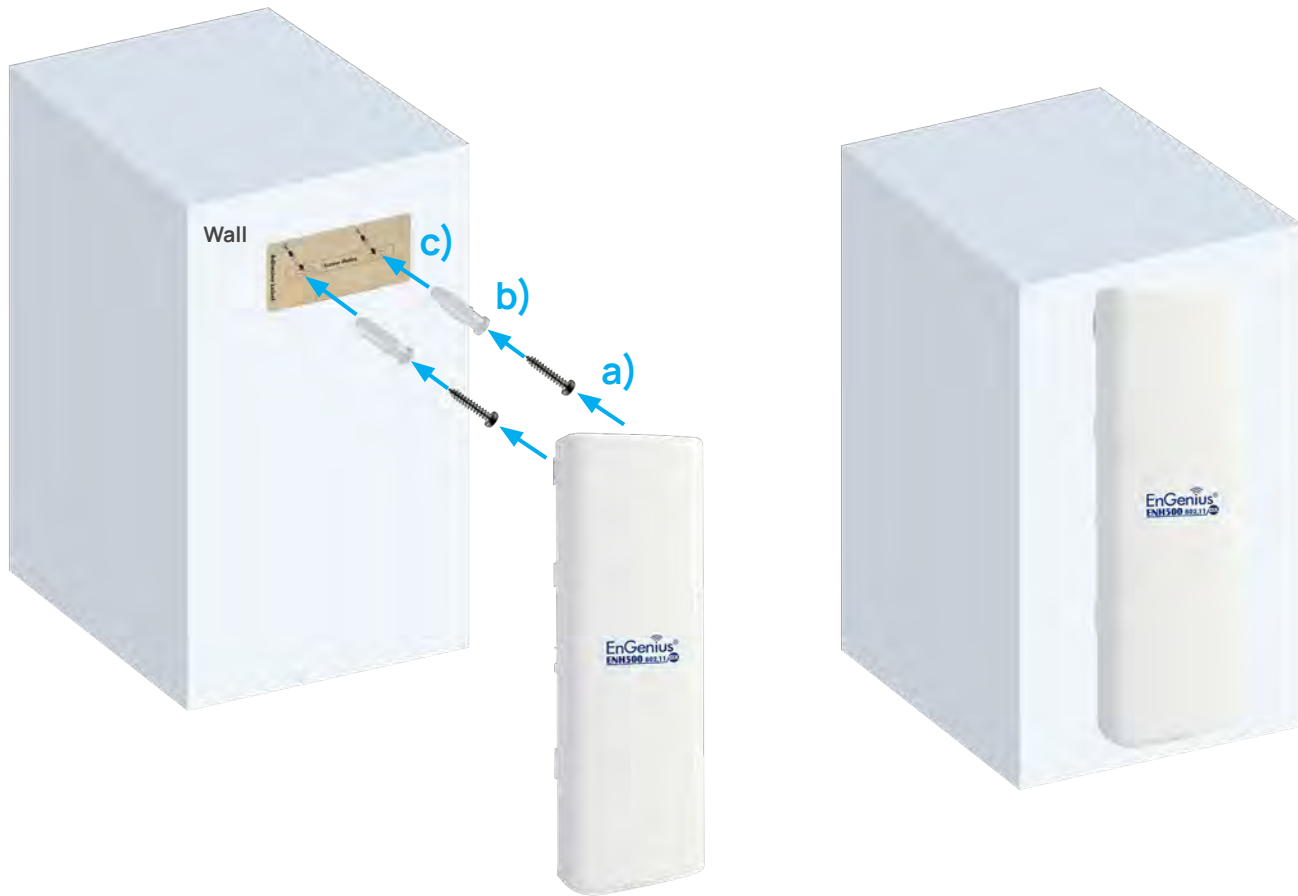
AP Time Slot Auto

Station Priority High

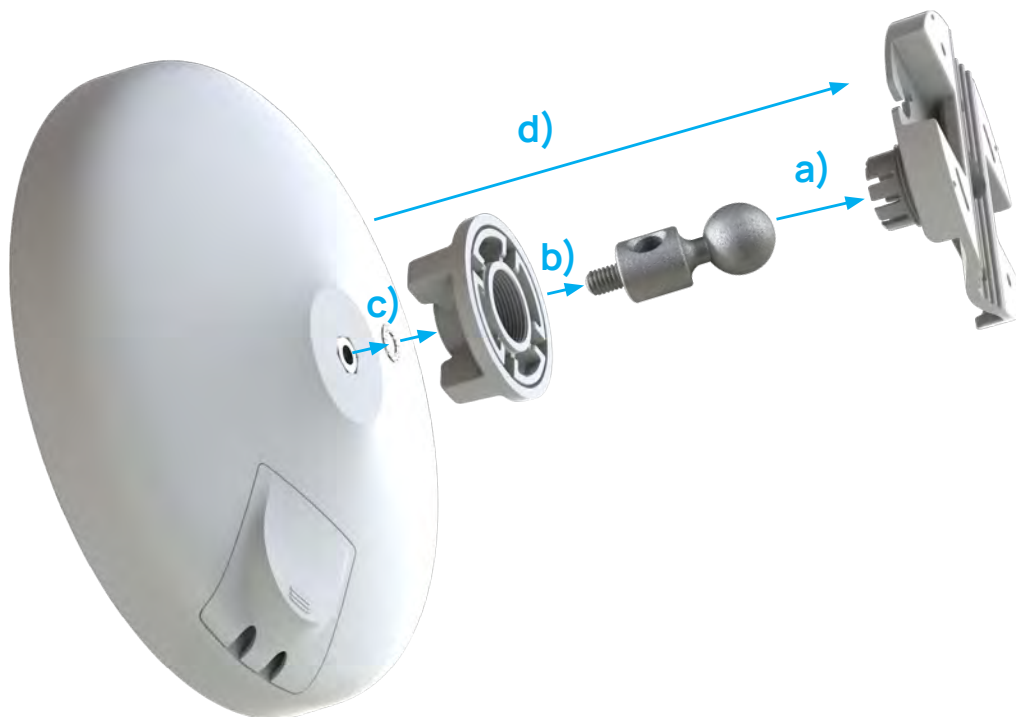
5 - Mounting the Device

Wall Mounting

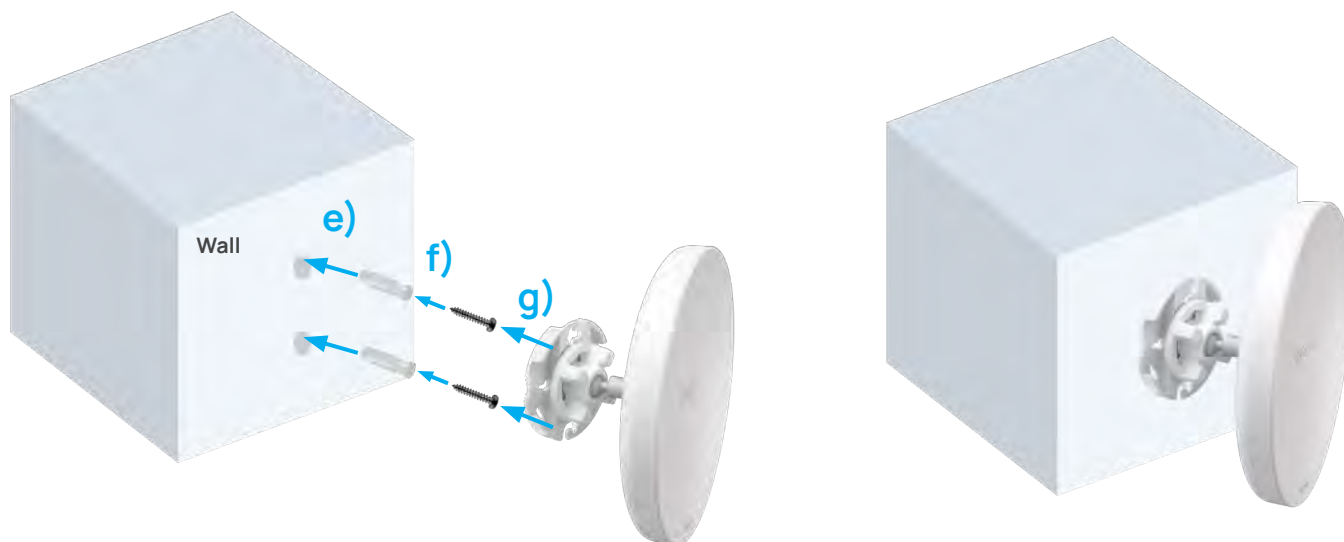
- a. Determine where the Access Point to be placed and stick the Adhesive label on the surface.
- b. Use the appropriate drill bit to drill two 8.1 mm diameter and 26 mm depth holes on the markings of the label.
- c. Remove the label and screw the anchors into the holes until they are flush with the wall.
- d. Screw the included screws into the anchors, place the Access Point against wall with the mounting screw heads.



- a. Plug the dynamic stick into the bracket.
- b. Screw the sealing nut and assembled parts, tighten it with 80kgf.cm.
- c. Put the nock washer on the dynamic stick.
- d. Assemble the mounting parts to the device.



- e. Determine the mounting location. Mark and drill two pilot holes aligning to the screw holes of the bracket.
- f. Put wall anchors into the holes and insert screw into the wall anchor.
- g. Screw and secure the bracket in place.



Pole Mounting

- a. Thread the open end of the Pole Strap through the two tabs on the Pole Mount Bracket.
- b. Lock and tighten Pole Strap to secure Pole Mount Bracket to the pole.



- a. Plug the dynamic stick into the bracket.
- b. Screw the sealing nut and assembled parts, tighten it with 80kgf.cm.
- c. Put the nock washer on the dynamic stick.
- d. Assemble the mounting parts to the device.
- e. Thread the open end of the pole strap through the two tabs on the bracket.
- f. Lock and tighten pole strap to secure bracket to the pole.

