



EnGenius Cloud Security Gateways

Faster speed, enhanced security, and unified Cloud management

The EnGenius Cloud Security Gateway Series delivers more simplicity and security to business networks by providing the IT team with an effortless setup, enterprise-level security, and an end-to-end Cloud-managed network solution. The Security Gateways are the crucial first line of defense—improving network traffic flow while offering an extra layer of network protection and can be cloud-managed from anywhere.

High-Throughput Stateful Firewall - The firewall feature of Security Gateways offers protection against network threats by enforcing company security policies and filtering malicious internet traffic in real-time while delivering a significantly high throughput.

Dual WAN Ports for Load Balance and Failover - The dual 2.5 Gigabit ports for both WAN and LAN ensure a smooth and reliable connection for external and in-line networking without any bottleneck. The dual WAN ports can be used for load balancing or failover, and the USB interface for mobile wireless dongles is designed to seamlessly back up when both WANs fail.

Auto VPN for Site-to-site and Client - The VPN connection can be activated in a few clicks without configuration hassle for site-to-site or client. The AUTO VPN will update related VPN information to all peers for continuous VPN connection if the WAN IP/Ports are changed due to ISP or Router configuration.

Intelligent and Easy Management with Cloud - The Security Gateways allow users to set up quickly and manage their entire network from anywhere using a central cloud interface or mobile app. The end-to-end solution will also offer core functionalities through a cloud-based network security system that allows customers greater visibility across its line of access points, PoE switches, and a fully operative security gateway.

Features & Benefits

- Unified Cloud management integrating with Access Points and Switches
- Stateful Firewall to protect networks with a High throughput
- Dual 2.5 GbE WAN and Dual 2.5 GbE LAN for maximum performance
- Built-in load balancing and safeguards with dual-WAN and cellular failover
- High-performance and secure Site-to-site VPN and Client VPN
- Quick self-healing AUTO VPN for faster and easier deployments
- Passthrough mode for existing network gateway or Router.
- Central management through web-based UI and Cloud To-Go app

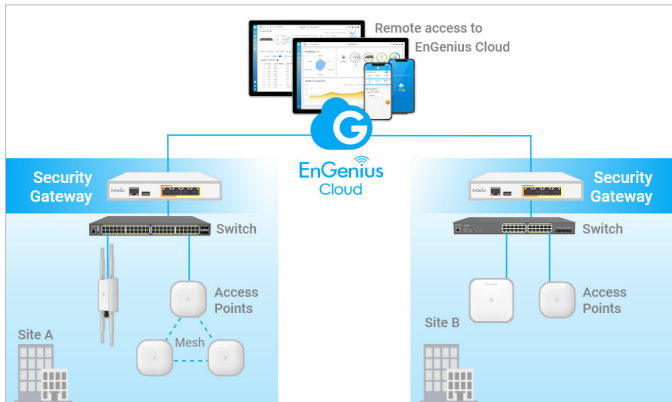


ESG510

Benefits for Your Business

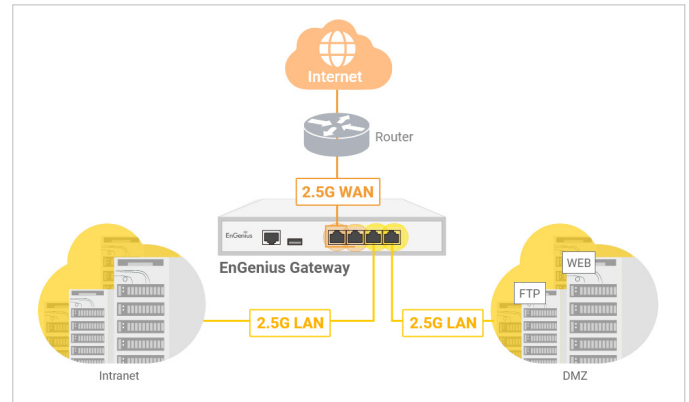
Unified Cloud-Management Integrating with APs and Switches

All Security Gateways can be managed by EnGenius Cloud and well-integrated with the Cloud-managed Access Points and Switches, allowing you to control all network devices' status through a single pane of glass.



Dual 2.5G WAN and LAN Ports for Optimal Performance

The dual 2.5 Gigabit ports for both WAN and LAN ensure a smooth and reliable connection for external and in-line networking without any bottleneck. With this high-position interface, businesses can meet the needs of high bandwidth usage for better performance.



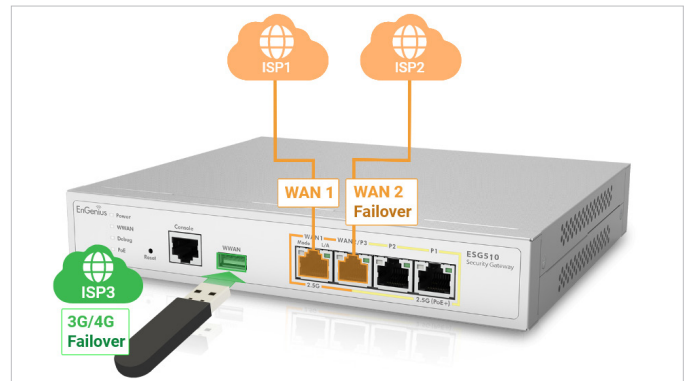
Protect Networks with High-throughput Stateful Firewall

EnGenius Security Gateways protect business networks from threats and attacks. The stateful firewall of Gateway integrates corporate security policies and real-time filtering of malicious internet traffic while delivering a high throughput.



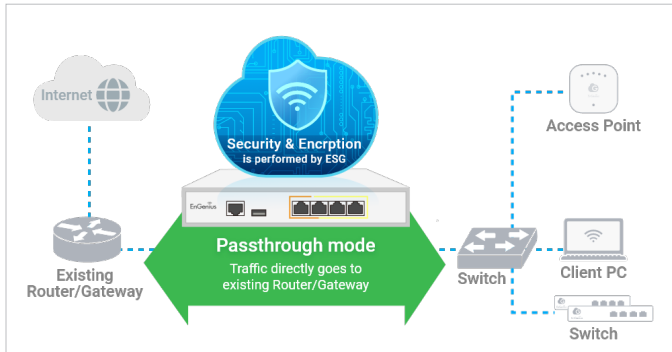
Stay Connected with WAN Failover and Cellular Failover

The dual WAN ports are ready for load balance to increase the WAN bandwidth or redundancy links. If all WAN ports go down, the 3G/4G network connection with the USB wireless dongle can provide a backup for the corporate network from disruption.



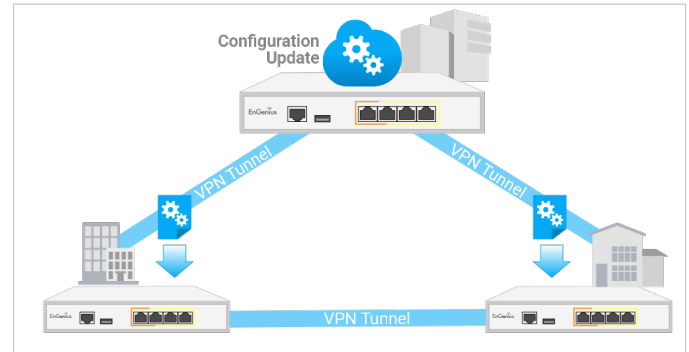
Passthrough Mode for Existing Network Gateway or Router

When businesses want to keep their current routing settings with existing routers or gateways, EnGenius Security Gateway can be set to the 'Passthrough' mode, which only performs data monitoring and security protection without affecting the original network configurations.



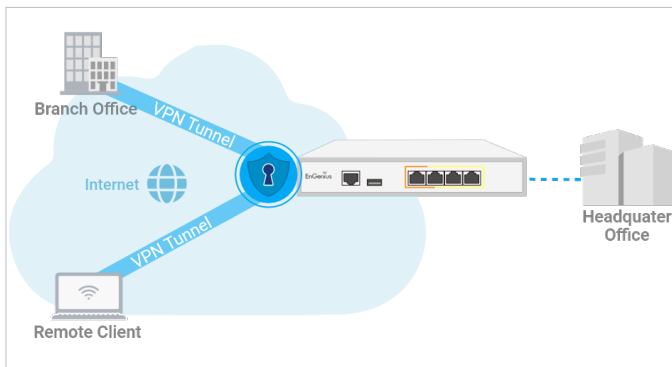
Easy Setup and Self-healing Auto VPN

It takes just few clicks to create a secure VPN connection without the hassle of configuring all the VPN detail parameters. If the VPN goes down due to WAN IP/port changes by ISP, EnGenius Cloud will update other peers for the most up-to-date WAN IP/Port for continuous VPN connection.



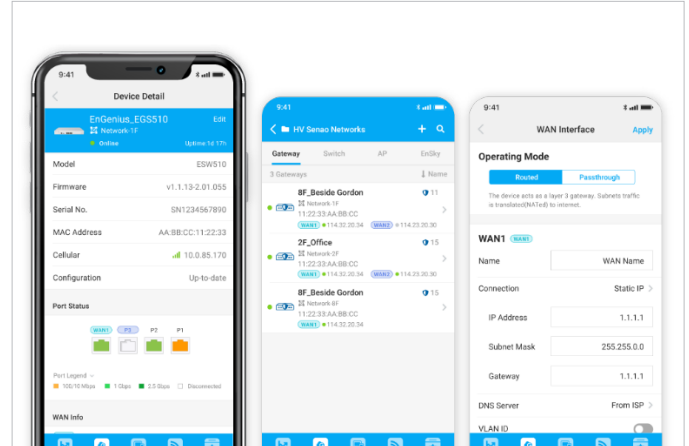
High-performance and Secure Site-to-Site VPN and Client VPN

EnGenius Security Gateways allow you to create secured connections for remote sites or clients with VPN tunnels. For business, integrating corporate security policies for web filtering and configuration provides employees with a safe and efficient connection. For end-users, their private data communications are secured for browsing the Internet or working from anywhere.



Remotely Manage Gateways On-the-Go

Easy setup and central management of the entire network from absolutely anywhere with EnGenius Cloud interface or Cloud To-Go mobile app.



EnGenius Cloud Security Gateways

Gateway			
Models	ESG510	ESG610 <small>coming soon</small>	ESG620 <small>coming soon</small>
Processor	Quad Core	Quad Core	Quad Core
Operating Frequency	@1.6GHz	@2.2GHz	@2.2GHz
Memory	4GB	8GB	8GB
Flash	8GB	8GB	16GB
RJ-45 Interface	4 x 2.5G	4 x 2.5G	8 x 2.5G
SFP interface	-	-	2 x 10G
PoE ports	1	1	4
PoE Standard	802.3 af/at	802.3 af/at	802.3 af/at
I/O Interfaces	1 x RJ-45 console/1 x USB 3.0	1 x RJ-45 console/1 x USB 3.0	1 x RJ-45 console/2 x USB 3.0
Mounting Method	Wall mount	Wall mount	Rack mount
Firewall (SPI throughput)	4G	6.7G(*)	9.5G(*)
VPN throughput	970M	1.7G(*)	1.7G(*)
Max. Concurrent VPN Tunnels	200	300(*)	300(*)
Max. Concurrent VPN Users	250	500(*)	500(*)
Max VLAN	96	256(*)	256(*)
Power	54V/1.2A	54V/1.2A	54V/1.2A
Dimensions	210 x 179.5 x 35 mm	210 x 179.5 x 35 mm	330 x 230 x 44 mm

*Note : The performance no are estimated number for reference only. Actual number will be based on the test when product launched.

Technical Specifications

CPU Processor
ESG510
Quad Core
Operating Frequency
ESG510
1.6GHz
Memory
ESG510
4GB
Storage
ESG510
8GB
Copper Ports
ESG510
4 x 2.5G
Console Ports
ESG510
1 x RJ-45
PoE Ports
ESG510
1
PoE Standard
ESG510
802.3 af/at
Mounting Method
ESG510
Wall mount
USB Interface
ESG510
1 x USB 3.0

Performance & Capacity

Firewall (SPI throughput)
ESG510
4G
VPN Throughput
ESG510
970M
Max. TCP Concurrent Sessions
ESG510
1,000,000
Max. Concurrent VPN Tunnels
ESG510
200
Max. Concurrent VPN Users
ESG510
250
Max. VLAN
ESG510
96

Firewall

Firewall Features
ESG510
Stateful Packet Inspection
Policy Rules
Port Forwarding
1:1 NAT
Allow Inbound Services

VPN

Site-to-Site VPN
ESG510
Mesh VPN/Hub-and-Spoke
Encryption
ESG510
DES, 3DES, AES (256-bit)
Authentication
ESG510
MD5, SHA1, SHA2 (512-bit)

Key Management

ESG510

IKEv1 (x-auth, mode-config)

IKEv2 (EAP, configuration payload)

VPN Features

ESG510

Site-to-Site VPN

Client VPN

Policy-based VPN

IPSec NAT traversal (NAT-T)

Dead Peer Detection (DPD)

Auto-VPN Connection

Auto NAT traversal

Networking

Operation Mode

ESG510

Routed/Passthrough

Multiple WANs

ESG510

Dual

Bandwidth Limit

ESG510

Per client/Per Interface

Traffic Load Balancing

ESG510

WAN load balancing with WRR

Networking Features

ESG510

Static Route

Multiple WANs

USB Cellular

User Authentication

PPPoE

VLAN Tagging

Captive Portal

Custom Splash Page

Dynamic Routing

DHCP client/server/relay

Dynamic DNS support

Environmental & Physical

Power

ESG510

54V/1.2A

Max. Power Consumption

ESG510

52w

Operation Temperature

ESG510

0°C to 40°C

Humidity (non-condensing)

ESG510

5 to 95% non-condensing

Dimensions & Weight

Dimensions

ESG510

210 x 179.5 x 35 mm

Weight

ESG510

0.97 kg

Package Contents

ESG510

Power adapter

Power cord

RJ-45 Console Cable

Wall Mount Kit

Quick Installation Guide

Compliance & Warranty

Regulatory Compliance

ESG510

FCC Part 15 (Class B)

IC

CE EMC (Class B)

RCM

BSMI

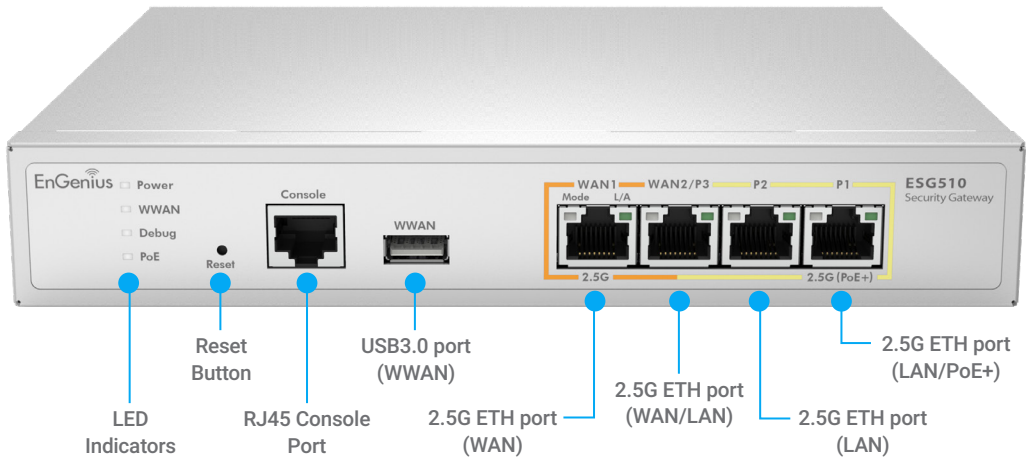
Warranty

ESG510

2 years

Maximum data rates are based on IEEE 802.11 standards. Actual throughput and range may vary depending on distance between devices or traffic and bandwidth load in the network.

ESG510 Product Views



Plug & Play with Zero Configuration



EnGenius Technologies | Costa Mesa, California, USA

Email: support@enginustech.com
Website: www.enginustech.com
Local contact: (+1) 714 432 8668

EnGenius Networks Singapore Pte Ltd. | Singapore

Email: techsupport@enginustech.com.sg
Website: www.enginustech.com.sg
Local contact: (+65) 6227 1088

EnGenius Technologies Canada | Ontario, Canada

Email: support@enginustech.com
Website: www.enginustech.com
Local contact: (+1) 905 940 8181

EnGenius Networks Dubai | Dubai, UAE

Email: support@enginustech-me.com
Website: www.enginustech-me.com
Local contact: (+971) 4 339 1227

EnGenius Networks Europe B.V. | Eindhoven, Netherlands

Email: support@enginustech.com
Website: www.enginustech.com
Local contact: (+31) 40 8200 887

恩睿科技股份有限公司 | Taiwan, R.O.C.

Email: support@enginustech.com.tw
Website: www.enginustech.com.tw
Local contact: (+886) 2 2652 1808