



EnGenius Cloud SD-WAN Gateways

Higher efficiency, enhanced security, and unified Cloud management

The EnGenius Cloud SD-WAN Gateway Series delivers more simplicity and security to business networks by providing the IT team with an effortless setup, enterprise-level security, and an end-to-end Cloud-managed network solution. The SD-WAN Gateways are the crucial first line of defense—improving network traffic flow while offering an extra layer of network protection and can be cloud-managed from anywhere.

Auto VPN for Site-to-site and Client - The VPN connection can be activated in a few clicks without configuration hassle for site-to-site or client. The AUTO VPN will update related VPN information to all peers for continuous VPN connection if the WAN IP/Ports are changed due to ISP or Router configuration.

Dual WAN Ports for Load Balance and Failover - The dual-ports for both WAN and LAN ensure a smooth and reliable connection for external and in-line networking without any bottleneck. The dual WAN ports can be used for load balancing or failover, and the USB interface for mobile wireless dongles is designed to seamlessly back up when both WANs fail.

High-Throughput Stateful Firewall - The firewall feature of SD-WAN Gateways offers protection against network threats by enforcing company security policies and filtering malicious internet traffic in real-time while delivering a significantly high throughput.

Integrated and Easy Management with Cloud - The SD-WAN Gateways allow users to set up quickly and manage their entire network from anywhere using a central cloud interface or mobile app. The end-to-end solution will also offer core functionalities through a cloud-based network security system that allows customers greater visibility across its line of access points, PoE switches, and a fully operative security gateway.

Features & Benefits

- Auto-VPN and NAT traversal
- Network topology and VPN status
- Site-to-site VPN and client VPN
- Stateful firewall and firewall policy applies to all
- Dual-Wan load balance and failover
- Touchless system maintenance and automatic updates
- Multi-mode passthrough and routing options
- Unified with EnGenius Cloud management
- Management on the go with Cloud To-Go



ESG320



ESG510



ESG610

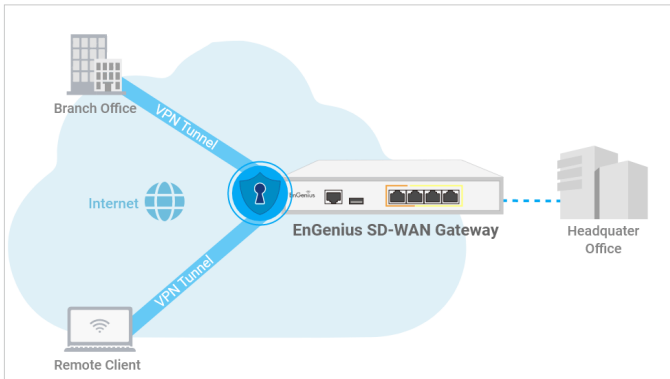


ESG620

Benefits for Your Business

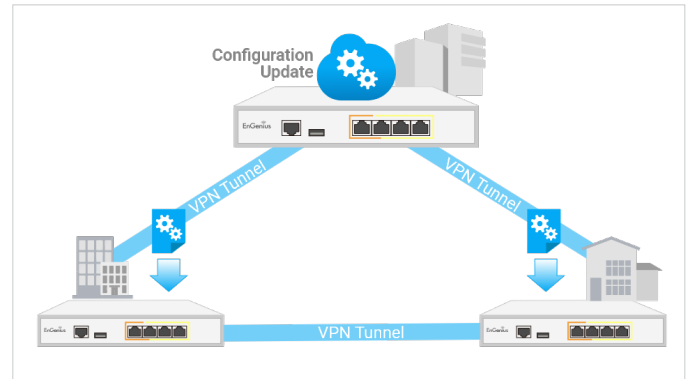
Easy setup and Secure SD-WAN connections for Branch Sites

Streamline your remote work and communication with site-to-site and client VPN. Forget the complexity of traditional VPN configurations and embrace effortless, secure, and private connections for your business.



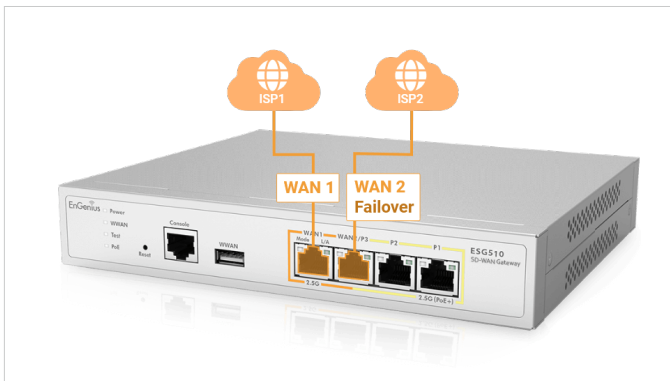
Effortlessly Maintain Network Connections with Self-healing Auto VPN

EnGenius Cloud automatically updates related VPN parameters to all peers, ensuring a seamless and secure connection even in case of WAN IP address reassignment or forwarding port changes.



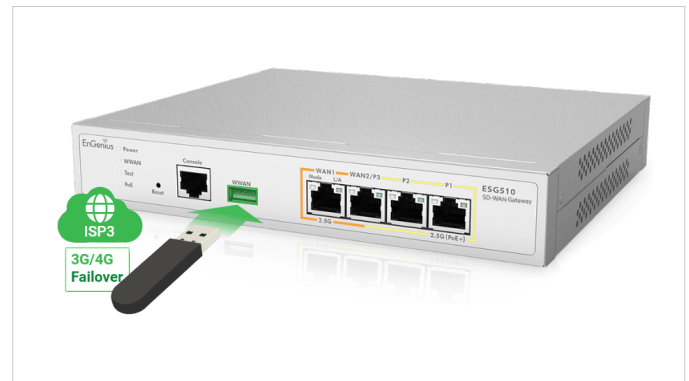
Achieve Flexible Connectivity through Dual WAN Ports Integration

The SD-WAN Gateway is capable of highly efficient load-balancing and redundancy, optimizing traffic by utilizing all available paths among multiple sites.



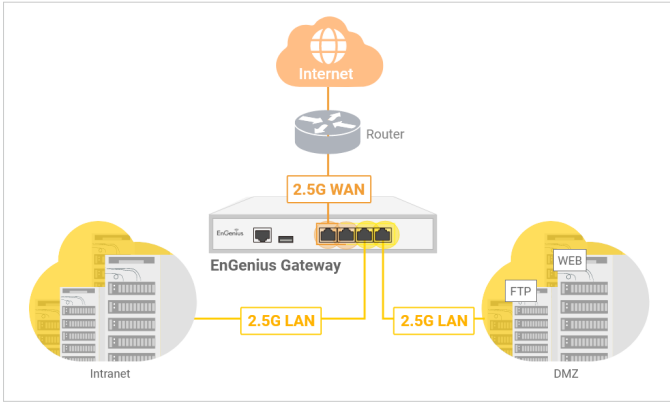
Uninterrupted Internet Connection with Cellular Failover

The advanced cellular WAN failover automatically switches to a redundant connection in case of interruption on all your WAN ports.



Achieve exceptional performance with 2.5 Gigabit WAN and LAN

EnGenius Cloud-managed SD-WAN Gateway boosts four powerful 2.5G ports for your networks, is ideally suited for high-speed WAN environments, and offers in-line architecture design for seamless 2.5G uplink to your existing router.



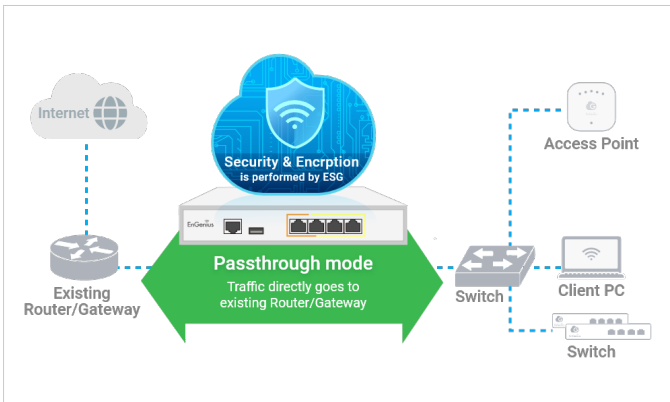
Protect Networks with High-throughput Stateful Firewall

Safeguard your business from potential threats and attacks with the stateful firewall that integrates robust corporate security policies and real-time filtering of malicious internet traffic, all while maintaining optimal network performance.



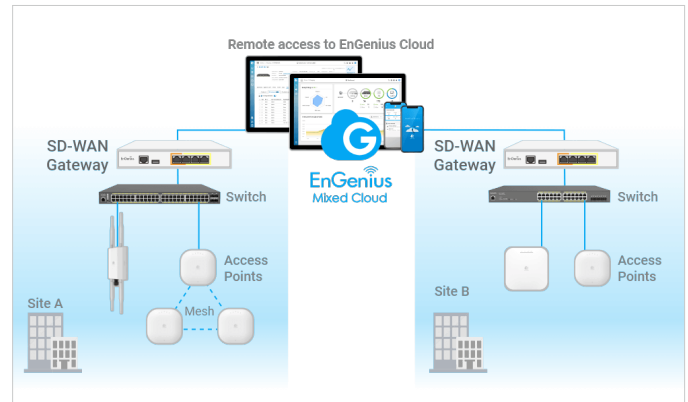
Passthrough Mode for Existing Network Gateway or Router

Maintain current routing settings and enhance security and monitoring capabilities with EnGenius SD-WAN Gateway's 'Passthrough' mode, seamlessly integrating with existing routers or gateways without disrupting your network configurations.



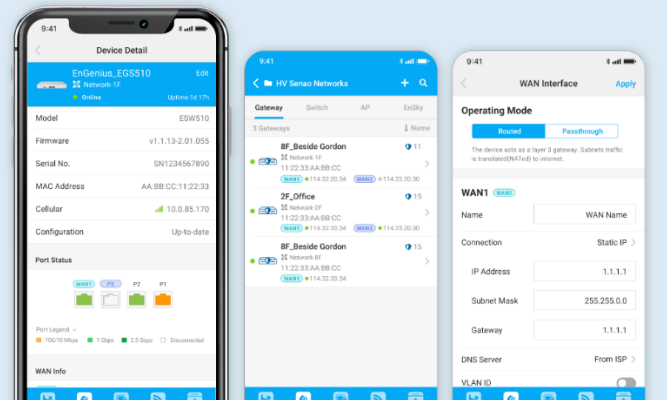
Unified Cloud-Management Integrating with APs and Switches

Experience effortless network management with EnGenius Cloud-Management and unified integration with SD-WAN gateways, APs, and switches. Monitor and control all your network devices with ease through a centralized, user-friendly interface.







Remotely Manage Gateways On-the-Go

Easily take control of your network from anywhere, anytime, with EnGenius SD-WAN Gateways. Seamless setup and centralized management of your networks with the Cloud To-Go mobile app.



EnGenius Cloud SD-WAN Gateways

SD-WAN Gateway				
				
Model Name	Gateway3 4G	Gateway5 4mG	Gateway6 4mG	Gateway6 8mG 2SFP+
Model Number	ESG320	ESG510	ESG610	ESG620
Processor	Dual Core	Quad Core	Quad Core	Quad Core
Operating Frequency	2.1GHz	1.6GHz	2.2GHz	2.2GHz
Memory	4GB	4GB	8GB	8GB
Flash	8GB	8GB	8GB	16GB
RJ-45 Interface	4x1G	4 x 2.5G	4 x 2.5G	8 x 2.5G
SFP interface	1 x SFP	-	-	2 x SFP+
PoE ports	1	1	1	4
PoE Standard	802.3 af/at	802.3 af/at	802.3 af/at	802.3 af/at
I/O Interfaces	1 x RJ-45 console/1 x USB 3.0	1 x RJ-45 console/1 x USB 3.0	1 x RJ-45 console/1 x USB 3.0	1 x RJ-45 console/1 x USB 3.0
Mounting Method	Wall mount	Wall mount	Wall mount	Rack mount
Security	TPM	TPM	TPM	TPM
Firewall (SPI throughput)	TBD	4G	6.7G(*)	9.5G(*)
VPN throughput	TBD	970M	1.7G(*)	1.7G(*)
Max. Concurrent VPN Tunnels	TBD	200	300(*)	300(*)
Max. Concurrent VPN Users	TBD	250	500(*)	500(*)
Max. TCP Concurrent Sessions	TBD	1,000,000	1,250,000	1,500,000
Max VLAN	TBD	96	256(*)	256(*)
Power	54V/1.2A	54V/1.2A	54V/1.2A	internal 300w power
Dimensions	210 x 179.5 x 35 mm	210 x 179.5 x 35 mm	210 x 179.5 x 35 mm	330 x 230 x 44 mm

*Note : The performance no are estimated number for reference only. Actual number will be based on the test when product launched.

Technical Specifications

CPU Processor

ESG320/

Dual Core

ESG510/ESG610/ESG620

Quad Core

Operating Frequency

ESG320

2.1GHz

ESG510

1.6GHz

ESG610/ESG620

2.2GHz

Memory

ESG320/ESG510

4GB

ESG610/ESG620

8GB

Flash Storage

ESG320/ESG510/ESG610

8GB

ESG620

16GB

RJ-45 Interface

ESG320

4 x 1G

ESG510/ESG610

4 x 2.5G

ESG620

8 x 2.5G

SFP interface

ESG320

1xSFP

ESG510/ESG610

-

ESG620

2xSFP+

PoE Ports

ECS320/ESG510/ESG610

1

ESG620

4

PoE Standard

ECS320/ESG510/ESG610/ESG620

802.3 af/at

I/O Interfaces

ESG320/ESG510/ESG610/ESG620

1 x RJ-45 console/1 x USB 3.0

Mounting Method

ECS320/ESG510/ESG610

Wall mount

ECS620

Rack mount

Security

ESG320/ESG510/ESG610/ESG620

TPM

Performance & Capacity

Firewall (SPI throughput)

ESG510

4G

ESG610

6.7G

ESG620

9.5G

VPN Throughput

ESG510

970M

ESG610/ESG620

1.7G

Max. TCP Concurrent Sessions

ESG510

200

ESG610/ESG620

300

Max. Concurrent VPN Users

ESG510

250

ESG610/ESG620

500

Max. TCP Concurrent Sessions

ESG510

1,000,000

ESG610

1,250,000

ESG620

1,500,000

Max VLAN

ESG510

96

ESG610/ESG620

256

Firewall

Firewall Features

ESG320/ESG510/ESG610/ESG620

Stateful Packet Inspection

Policy Rules

Port Forwarding

1:1 NAT

Allow Inbound Services

VPN

Site-to-Site VPN

ESG320/ESG510/ESG610/ESG620

Mesh VPN/ Hub-and-Spoke

Encryption

ESG320/ESG510/ESG610/ESG620

DES, 3DES, AES (256-bit)

Authentication

ESG320/ESG510/ESG610/ESG620

MD5, SHA1, SHA2 (512-bit)

Key Management

ESG320/ESG510/ESG610/ESG620

IKEv1 (x-auth, mode-config)

IKEv2 (EAP, configuration payload)

VPN Features

ESG320/ESG510/ESG610/ESG620

Site-to-Site VPN

Client VPN

Policy-based VPN

IPSec NAT traversal (NAT-T)

Dead Peer Detection (DPD)

Auto-VPN Connection

Auto NAT traversal

Networking

Operation Mode

ESG320/ESG510/ESG610/ESG620

Routed/Passthrough

Multiple WANs

ESG320/ESG510/ESG610/ESG620

Dual

Bandwidth Limit

ESG320/ESG510/ESG610/ESG620

Per client/Per Interface

Traffic Load Balancing

ESG320/ESG510/ESG610/ESG620

WAN load balancing with WRR

Networking Features

ESG320/ESG510/ESG610/ESG620

Static Route

Multiple WANs

USB Cellular

User Authentication

PPPoE

VLAN Tagging

Captive Portal

Custom Splash Page

Dynamic Routing

DHCP client/server/relay

Dynamic DNS support

Environmental & Physical

Power

ESG320/ESG510/ESG610

54V/1.2A

ESG620

internal 300w power

Operation Temperature

ESG320/ESG510/ESG610/ESG620

0°C to 40°C

Humidity (non-condensing)

ESG320/ESG510/ESG610/ESG620

5 to 95% non-condensing

Dimensions & Weight

Dimensions

ESG320/ESG510/ESG610

210 x 179.5 x 35 mm

ESG620

330 x 230 x 44 mm

Package Contents

ESG320/ESG510/ESG610

Power adapter

Power cord

RJ-45 Console Cable

Wall Mount Kit

Product Card

ESG620

Power cord

RJ-45 Console Cable

Rack Mount Kit

Product Card

Compliance & Warranty

Regulatory Compliance

ESG320/ESG510/ESG610/ESG620

FCC Part 15 (Class B)

IC

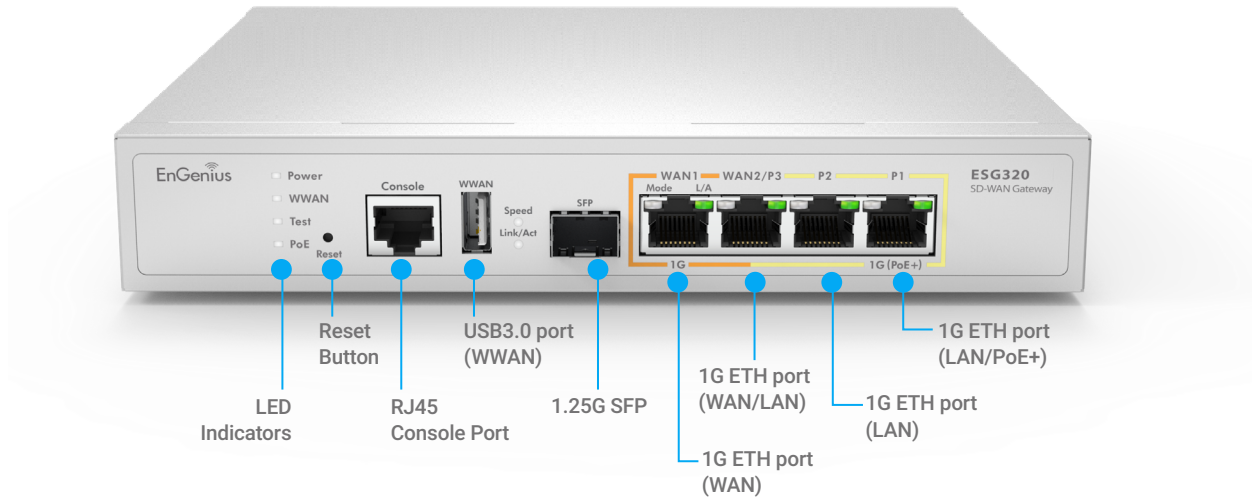
CE EMC

CB

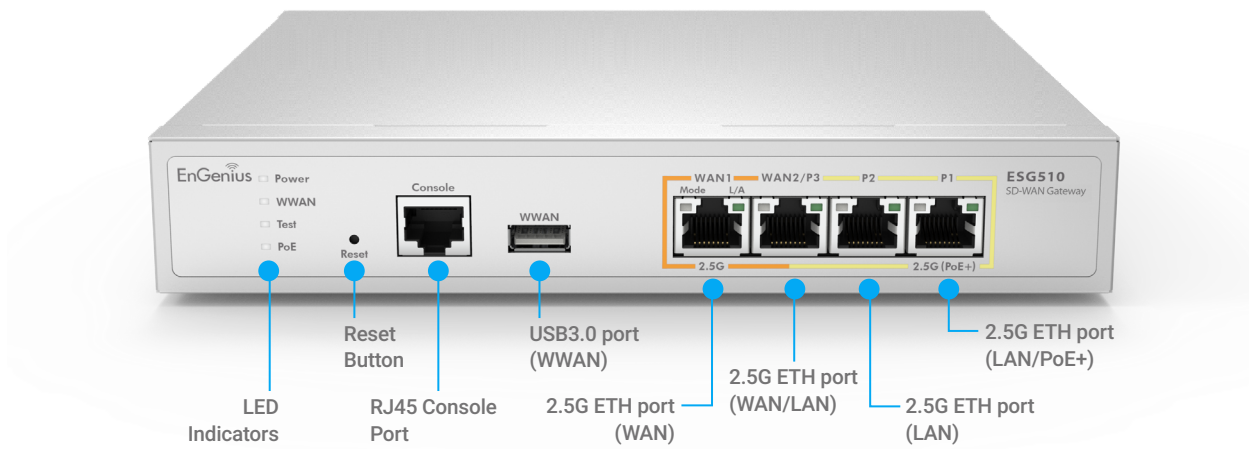
UL

Maximum data rates are based on IEEE 802.11 standards. Actual throughput and range may vary depending on distance between devices or traffic and bandwidth load in the network.

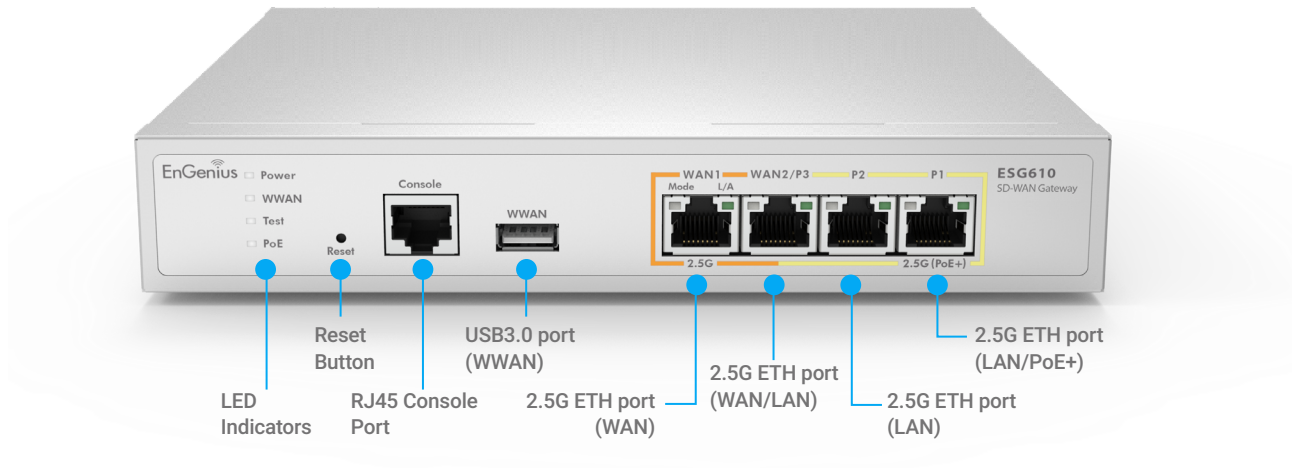
ESG320 Hardware Overview



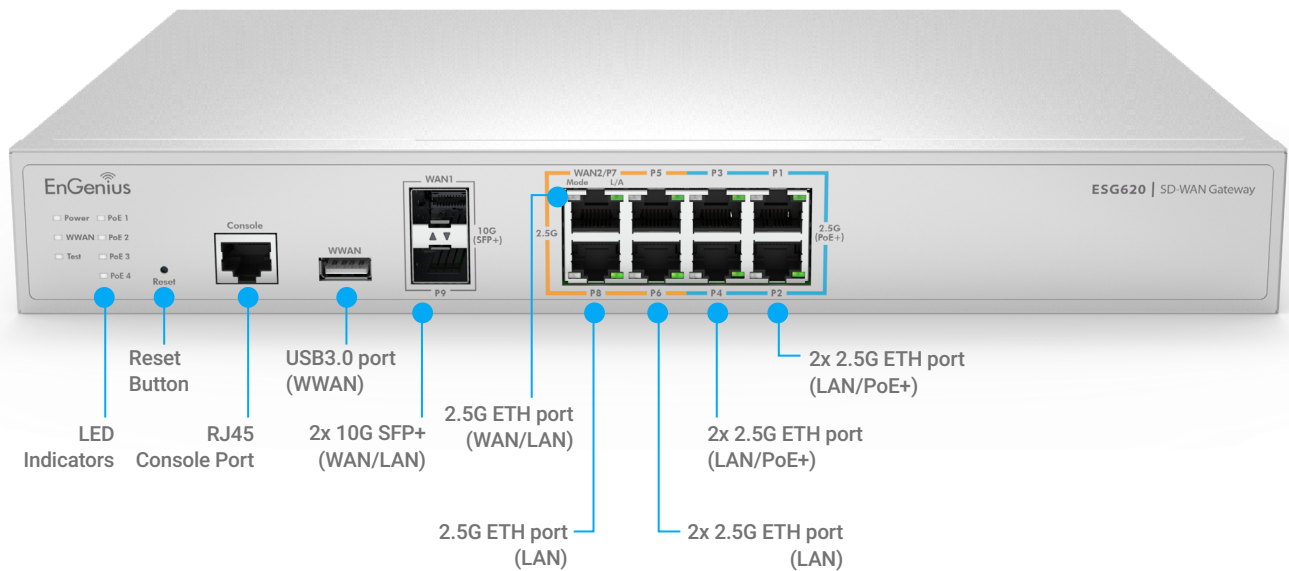
ESG510 Hardware Overview



ESG610 Hardware Overview



ESG620 Hardware Overview



Plug & Play with Zero Configuration



EnGenius Technologies | Costa Mesa, California, USA

Email: support@enginustech.com
Website: www.enginustech.com
Local contact: (+1) 714 432 8668

EnGenius Networks Singapore Pte Ltd. | Singapore

Email: techsupport@enginustech.com.sg
Website: www.enginustech.com.sg
Local contact: (+65) 6227 1088

EnGenius Technologies Canada | Ontario, Canada

Email: support@enginustech.com
Website: www.enginustech.com
Local contact: (+1) 905 940 8181

EnGenius Networks Dubai | Dubai, UAE

Email: support@enginustech-me.com
Website: www.enginustech-me.com
Local contact: (+971) 4 339 1227

EnGenius Networks Europe B.V. | Eindhoven, Netherlands

Email: support@enginustech.com
Website: www.enginustech.com
Local contact: (+31) 40 8200 887

恩碩科技股份有限公司 | Taiwan, R.O.C.

Email: support@enginustech.com.tw
Website: www.enginustech.com.tw
Local contact: (+886) 2 2652 1808