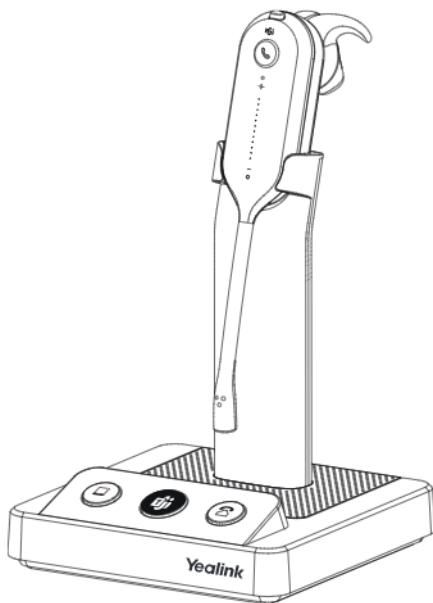


WH63

DECT Wireless Headset



* The pictures in this guide take the Teams version as an example.

Quick Start Guide

V1.6

Excellent Work Partner for Phone and UC Communication

The Yealink WH63 is a new entry-level convertible DECT wireless headset. Work seamlessly with major UC platforms and integrate natively with Yealink IP Phones. For crystal sound experience, Yealink Super Wideband HD Audio Technology and Acoustic Shield Technology make you talk and hear clearly during phone calls and video conferencing. Easily finger-touch control, 19g lightweight design, interruption free, WH63 is a nice convertible headset for work.

- Acoustic Shield Technology
- Optima Audio Experience
- Four Wearing Options
- Built-in Ringer
- Multiple Devices Connection
- Customizable Busylight
- Easy Management
- Plug and Play

Native Integration

No more EHS adapters needed, connect desk phone directly with one USB cable. And 2 Micro USB ports mounted in the base, supporting connect with PC and phone simultaneously. Integrated deeply with Yealink IP Phones, you can just feel the crystal call experience at the moment of wearing WH63. Also work with popular UC platforms, achieving all-round collaboration.

Be Heard Crystal Clearly

With Yealink Acoustic Shield Technology, the two Microphones built in WH63 block the background noise automatically but ensure participant voice be heard clearly, greatly boost the communication efficiency.

Interruption Free

Busylight is enabled in WH63. With the light on the headset or BLT60 on the desk turning red, people around you would know that you are on the phone, instead of interrupting you unknowingly. Just stay focused on conversation, for higher efficiency, for better collaboration.

Multiple wearing options

WH63 supports different ways of wearing, ear-hook, headband, and neckband, satisfying personalized needs. It can also free you up to 120m away from the desk, enjoying larger workspace and bettering work experience.

1 Package Contents



Base



Headset



Power Adapter



Earhook & Eartips



Micro USB to USB-A
USB Cable 0.8M



Headband



Neckband (Optional)



Micro USB to USB-A
USB Cable 1.2M



Quick Start Guide

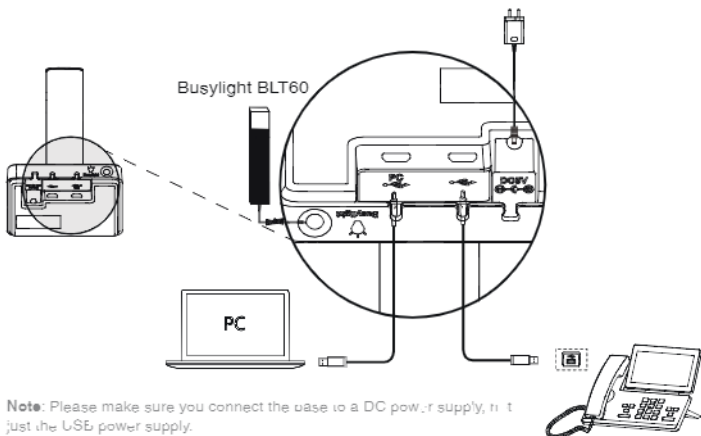


Busylight BLT60
(Optional)

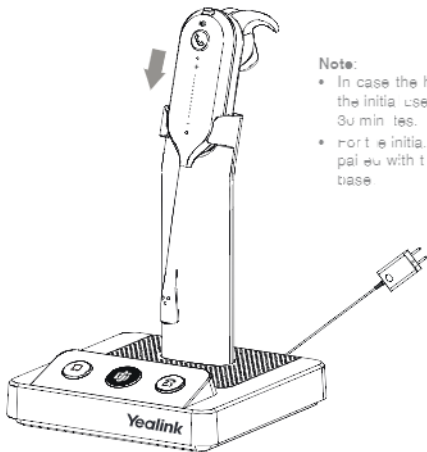
Note:

- We recommend that you use the included accessories, because other accessories may have compatibility issues that prevent them from working properly.
- If you want to connect to Yealink S3 series phone, you need to purchase Yealink HS35 wireless headset adapter separately.
- One of the eartips has been attached to the headset.

2 Connection



3 Charge the Headset

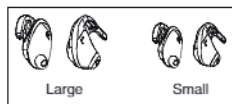


Note:

- In case the headset is under low battery or the initial use, dock it to the charging base for 30 minutes.
- For the initial use, the headset is successfully paired with the base when you dock it in the base.

4 Wear the Headset

Eartip wearing style: faster to wear



Right Ear (ready to use out of the box)



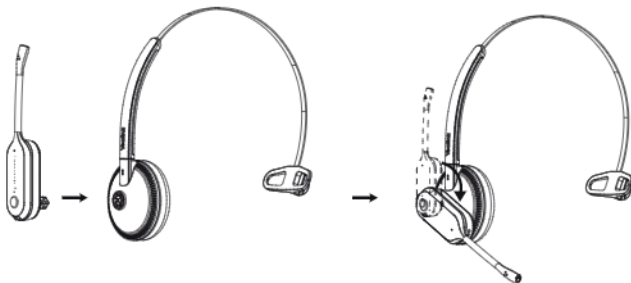
Left Ear



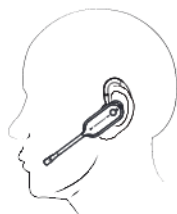
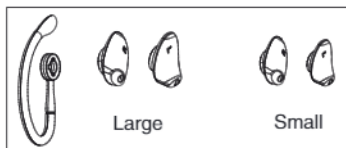
Headband wearing style: comfortable to wear



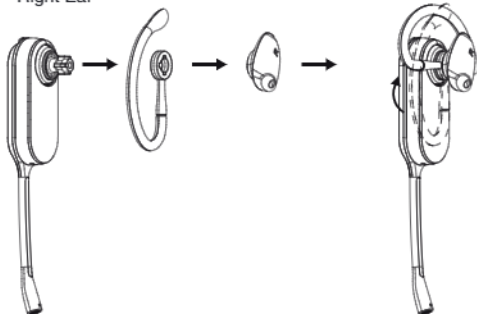
Note: The headset can be worn with the microphone on the left or the right.



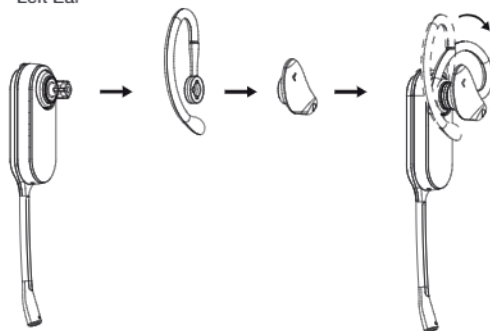
Earhook & Eartip wearing style: enhance wearing stability



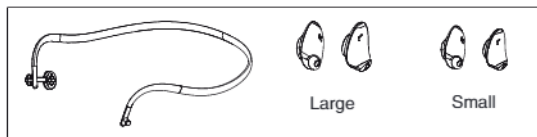
Right Ear



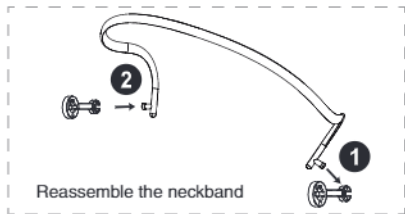
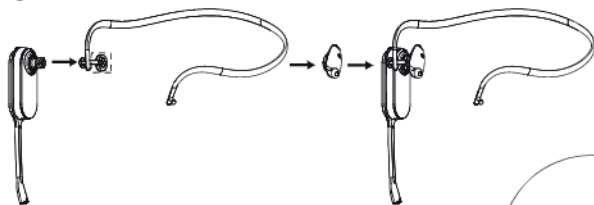
Left Ear



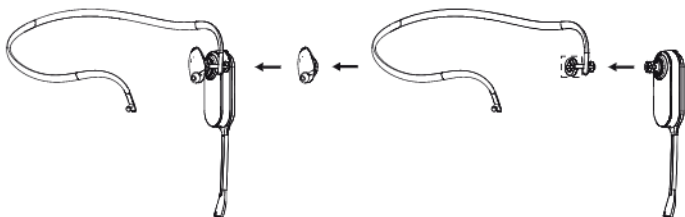
Neckband wearing style: preserve your hairstyle



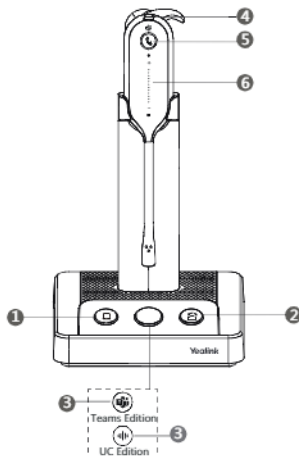
Right Ear



Left Ear



5 Usage



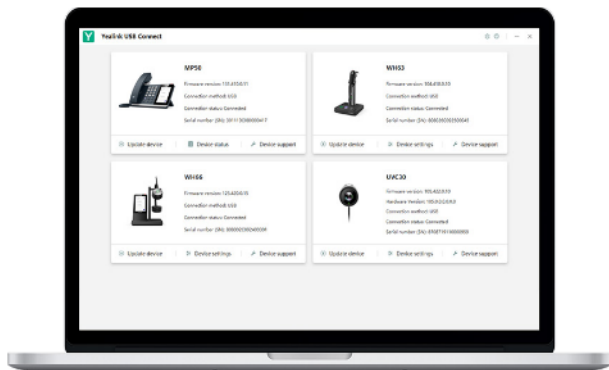
No.	Item	Action & Function
1	PC Button	Press to enter the softphone dialing screen, answer or end a softphone's call.
2	Phone Button	Press to enter the phone dialing screen, answer or end a phone's call.
3	(Teams Edition) Teams Button (UC Edition) Voice Assistant Button	<ul style="list-style-type: none"> Hold for 2 seconds to activate Cortana (this requires Microsoft's support). Press to invoke the Teams client in the idle state.
4	Mute Button	Press to mute or unmute the microphone.
5	Call Control Button	<ul style="list-style-type: none"> Press to answer or end a call. Double-tap to reject a call. Hold for 2 seconds to activate Cortana (this requires Microsoft's support). Press to invoke the Teams client in the idle state.
6	Volume Control Panel	Slide up or down to adjust volume.

Note: Before using the Teams functions, you should install the Microsoft Teams client on your PC.

Software

Yealink USB Connect

Yealink provides a USB device manager client - Yealink USB Connect, which you can use to personalize and manage your Yealink headsets.



Download it from the Yealink website <https://www.yealink.com/product/yuc/>

Regulatory Notices

Operating Ambient Temperatures


- Operating temperature: +32 to 104°F (0 to 40°C)
- Relative humidity: 5% to 80%, noncondensing
- Storage temperature: 22°F to 140°F (-30 to +70°C)

Warranty

Our product warranty is limited only to the device, when used normally according to the operating instructions and the system environment. We are not liable for damage or loss resulting from the use of this product, or for any claim from a third party that we are not liable for, properly with, or any claim arising from the use of this product, we are not liable for financial damage, lost profits, or loss from third parties, etc., arising from the use of this product.

Explanation of the symbol

- DC symbol
- is the DC voltage symbol.
- WEEE Warning symbol

 To avoid the potential effects on the environment and human health as a result of the presence of hazardous substances in electrical and electronic equipment, end users of electrical and electronic equipment should understand the meaning of the crossed-out wheeled bin symbol. Do not dispose of WEEE as unsorted municipal waste and have to collect such WEEE separately.

Restriction of Hazardous Substances (RoHS)

This device complies with the requirements of the EU RoHS Directive. Statements of compliance can be obtained by contacting support@yealink.com.

Safety Instructions

Read these safety instructions before using.

General Requirements

- Before you install and use the device, read the safety instructions carefully and observe the situation during operation.
- During the process of storage, transportation, and operation, please always keep the device dry and clean, avoid collision and crash.
- Please attempt not to dismantle the device by yourself. In case of any discrepancy, please contact the appointed maintenance center for repair.
- Please refer to the relevant laws and statutes while using the device. Legal rights of others should be respected as well.

Environmental Requirements

- Place the device at a well-ventilated place. Do not expose the device under direct sunlight.
- Keep the device dry and free of dust.
- Do not place the device on or near any inflammable or fire-vulnerable object, such as rubber-made materials.
- Keep the device away from any heat source or bare fire, such as a candle or an electric heater.

Operating Requirements

- Do not let a child operate the device without guidance.
- Do not let a child play with the device or any accessory in case of accidental swallowing.
- Please use the accessories provided or authorized by the manufacturer only.
- The power supply of the device shall meet the requirements of the input voltage of the device. Please use the provided surge protection power socket only.
- Before plugging or unplugging any cable, make sure that your hands are completely dry.
- Do not spill liquid of any kind on the product or use the equipment near water, for example, near a bathtub, washbowl, kitchen sink, wet basement or near a swimming pool.
- During a thunderstorm, stop using the device and disconnect it from the power supply. Unplug the power plug and the Asymmetric Digital Subscriber Line (ADSL) twisted pair (the radio frequency cable) to avoid lightning strike.
- If the device is left unused for a rather long time, disconnect it from the power supply and unplug the power plug.
- When there is smoke emitted from the device, or some abnormal noise or smell, disconnect the device from the power supply, and unplug the power plug immediately.
- Contact the specified maintenance center for repair.
- Do not insert any object into equipment slots that is not part of the product or auxiliary product.
- Before connecting a cable, connect the grounding cable of the device first. Do not disconnect the grounding cable until you disconnect all other cables.

Battery Requirements

- Do not immerse the battery into water, which could short-circuit and damage the battery.
- Do not expose the battery to an open flame or leave the battery where it could be subjected to extremely high temperatures, which could cause the battery to explode.
- Do power the handset off before removing the battery.
- Do not try to use the battery for the power supply of any device other than this handset.
- Do not open or mutilate the battery, released electrolyte is corrosive and may cause damage to your eyes or skin.
- Use only the rechargeable battery pack delivered with the handset or those rechargeable battery packs expressly recommended by Yealink.
- Defective or exhausted battery should never be disposed of as municipal waste. Return old battery to the battery supplier, a licensed battery dealer or a designated collection facility.

Cleaning Requirements

- Before cleaning the device, disconnect it from the power supply.
- Use a piece of soft, dry and anti-static cloth to clean the device.
- Keep the power plug clean and dry.

Troubleshooting

The unit cannot supply power to Yealink device.

There is a bad connection with the plug.

1. Clean the plug with a dry cloth.
 2. Connect it to another wall outlet.
- The usage environment is out of operating temperature range.

1. Use in the operating temperature range.

The cable between the unit and the Yealink device is connected incorrectly.

1. Connect the cable correctly.

You cannot connect the cable properly.

1. You may have connected a wrong Yealink device.

2. Use the correct power supply.

Some dust etc. may be in the port.

1. Clean the port.

Contact your dealer or authorized service facility for any further questions.

FCC CAUTION

This device complies with part 15 of the FCC Rules. Operation is subject to the following two conditions: (1) This device may not cause harmful interference, and (2) this device must accept any interference received, including interference that may cause undesired operation. Any changes or modifications not expressly approved by the party responsible for compliance could void the user's authority to operate the equipment.

Notice: This equipment has been tested and found to comply with the limits for a Class B digital device, pursuant to part 15 of the FCC Rules. These limits are designed to provide reasonable protection against harmful interference in a residential installation. This equipment generates, uses and can radiate radio frequency energy and, if not installed and used in accordance with the instructions, may cause harmful interference to radio communications. However, there is no guarantee that interference will not occur in a particular installation. If this equipment does cause harmful interference to radio or television reception, which can be determined by turning the equipment off and on, the user is encouraged to try to correct the interference by one or more of the following measures:

—Reorient or relocate the receiving antenna.

—Increase the separation between the equipment and receiver.

—Connect the equipment into an outlet on a circuit different from that to which the receiver is connected.

—Consult the dealer or an experienced radio/TV technician for help.

The equipment complies with FCC radiation exposure limits set forth for an uncontrolled environment.

This transmitter must not be co-located or operating in conjunction with any other antenna or transmitter.

ISED WIRELESS

This device complies with Innovation, Science and Economic Development Canada's licence-exempt RSS standard(s). Operation is subject to the following two conditions: (1) this device may not cause interference, and (2) this device must accept any interference, including interference that may cause undesired operation of the device.

Le présent appareil est conforme aux CNR d'Industrie Canada applicables aux appareils radio exempts de licence. L'exploitation est autorisée aux deux conditions suivantes : (1) l'appareil ne doit pas produire de brouillage, et (2) l'utilisateur de l'appareil doit accepter tout brouillage radioélectrique subi, même si le brouillage est susceptible d'en compromettre le fonctionnement.

This Class B digital apparatus complies with Canadian ICES-003. Cet appareil numérique de la classe B est conforme à la norme NMB-003 du Canada.

Les communications effectuées au moyen de cet appareil ne sont pas nécessairement protégées des indiscrétions.

EU Regulatory Information

Support Frequency Bands and Power:

CECT 1.8GHz-1.9GHz; 24 dBm

Contact Information

YEALINK NETWORK TECHNOLOGY CO., LTD.

9-3rd Floor, No. 10, Wuyang North Road, Nantong City, Jiangsu, P.R.C

YEALINK (EUROPE) NETWORK TECHNOLOGY B.V.

Schinkelweg 3127, Atrium Building, 8th floor, 1077ZX

Amsterdam, The Netherlands

YEALINK (USA) NETWORK TECHNOLOGY CO., LTD.

309 Peachtree Street Suite 2300, Atlanta, Atlanta, GA, 30309, USA

Made in China

Note: WH6x support Yealink T27G/T4xS/T4U/T53/T5xW/T58/VP59 through USB connection, and WH6x/63 support Yealink T3x with EHS35. To have better experience, the phone firmware recommended to be v6.0 (xx.06.x.xx) or higher. You can find more detail in "Yealink Headset Compatibility Guide" from Yealink support website.

If your headset needs warranty service, the process is quick and easy. Please go to <https://ticket.yealink.com/page/headset/warranty-service.html> and submit RMA Claim to Yealink.

Need more help?



Yealink Documentation
& Video



Yealink Headset
Compatibility Guide

Technical Support

Visit Yealink Wiki (<http://support.yealink.com/>) for the latest firmware guides, FAQ, Product documents, and more. For better service, we sincerely recommend you to use Yealink Ticketing system (<https://ticket.yealink.com/>) to submit all your technical issues.



430104002081

YEALINK(XIAMEN) NETWORK TECHNOLOGY CO.,LTD.
Web: www.yealink.com
Copyright©2022 YEALINK(XIAMEN) NETWORK
TECHNOLOGY CO.,LTD. All rights reserved.

