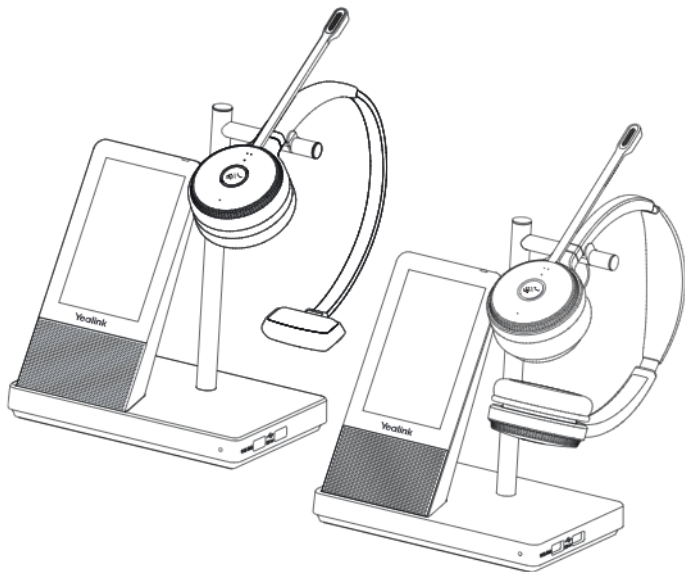


WH66 Mono & WH66 Dual DECT Wireless Headset



* The pictures in this guide take the Teams version as an example.

All-in-one UC Workstation Redefine Your Workspace

The Yealink WH66 is the Industry-leading DECT wireless headset, with WH66 Dual and WH66 Mono two models, opening an entirely new world of desktop collaboration. Work seamlessly with major UC platforms and integrate natively with Yealink IP Phones. 4.0 inch (480 x 800) capacitive touch screen on base offers newly work experience, just one touch all control. Act as a workstation, managing phone calls, connecting with multiple devices (desk phone/mobile phone/computer), charging mobile phone wirelessly, and even playing a speakerphone's role. Best of all, deploying such a multifunctional workstation only needs to plug directly. Easiest things to do, greatest convenience to enjoy.

- Acoustic Shield Technology
- Optimal Audio Experience
- Touch Screen: LCD
- Multiple Devices Connection
- Speakerphone Mode
- Built-in USB Hub
- Qi Wireless Charger
- Customizable Busylight

All-In-One UC Workstation

Desktop collaboration boosts efficiency a lot especially when working from home, but it can be also annoyed that the desktop is very messy with multiple device cables. Take control of your desktop collaboration environment with WH66.

- Connect all devices you want with built-in Bluetooth and USB port
- Expand PC's connectivity with 2 port USB hub
- Control all calls on the 4.0 inch (480 x 800) capacitive touch screen by simply finger touch.
- Function as a hand-free phone, freeing from wearing headset
- Charge mobile phone wirelessly and transform it into nice efficient conferencing device.

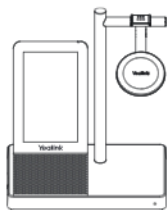
Be Heard Crystal Clearly

With Yealink Acoustic Shield Technology, the two Microphones built in WH66 block the background noise automatically but ensure participant voice be heard clearly, greatly boost the communication efficiency.

Interruption Free

Busylight is enabled in WH66. With the light on the headset or BLT on the desk turning red, people around you would know that you are on the phone, instead of interrupting you unknowingly. Just stay focused on conversation, for higher efficiency, for better collaboration.

1 Package Contents



Base



Mono/Dual Headset



Power Adapter



USB-A to USB-C USB
Cable 1.0M



USB-A to USB-A USB
Cable 1.0M



Quick Start Guide



BT50 (Optional)



Busylight BLT60
(Optional)

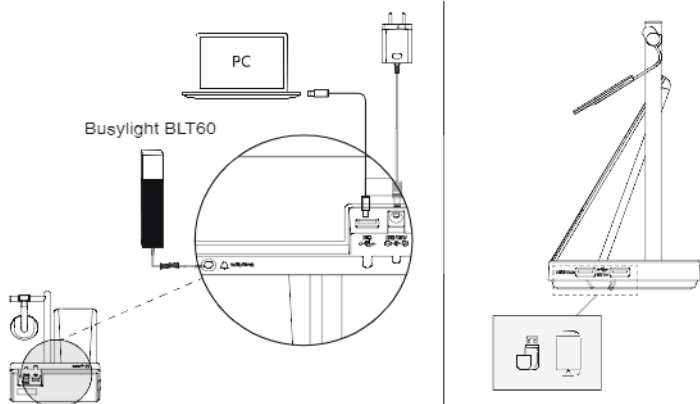


Wireless Charger
WHC60 (Optional)

Note:

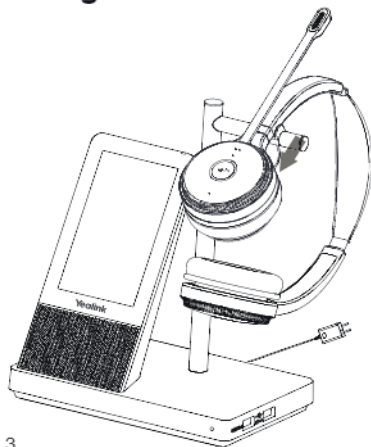
- We recommend that you use the included accessories, because other accessories may have compatibility issues that prevent them from working properly.
- The included USB-A to USB-C cable is specially provided for connecting the wireless charger WHC60, and connecting WHC60 to a PC or to the computer Yrealink desktop phone.

2 Connection



Note: Please make sure you connect the base to a DC power supply, not just the USB power supply. The included USB-A to USB-C cable cannot be used to connect other devices (for example, mobile devices) to the USB hub port.

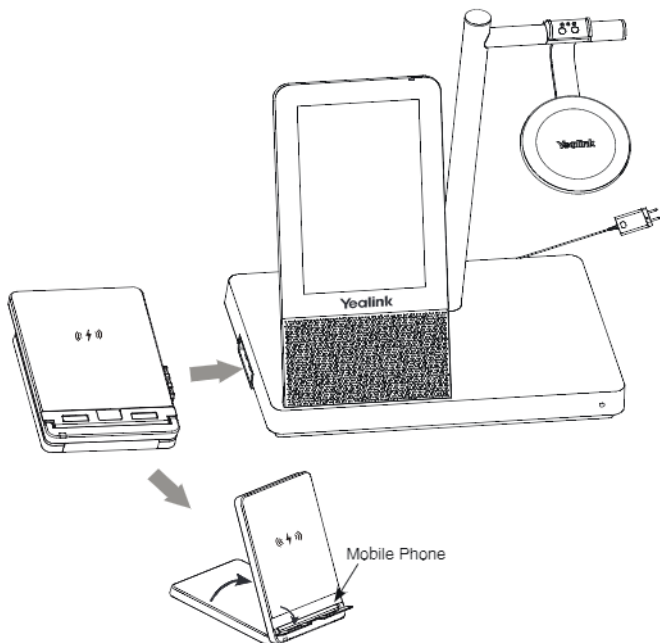
3 Charge the Headset



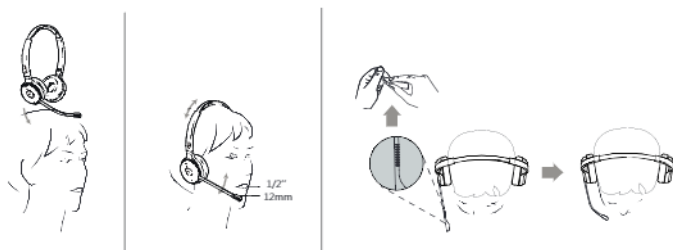
Note:

- In case the headset is under low battery for the initial use, dock it to the charging base for 30 minutes.
- For the initial use, the headset is successfully paired with the base when you dock it to the base.

4 Charge the Mobile Phone



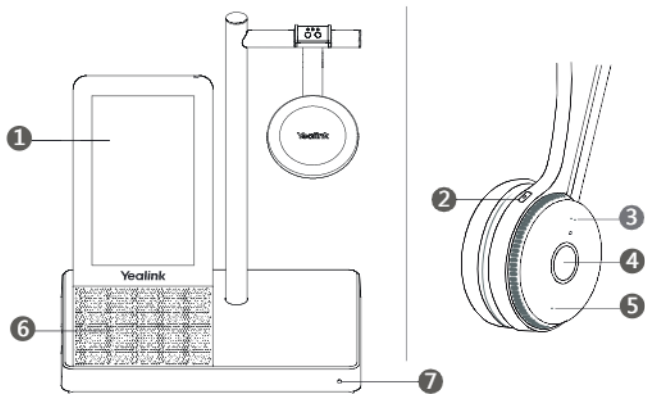
5 Wear the Headset



6 Replace Ear Cushions



7 Usage



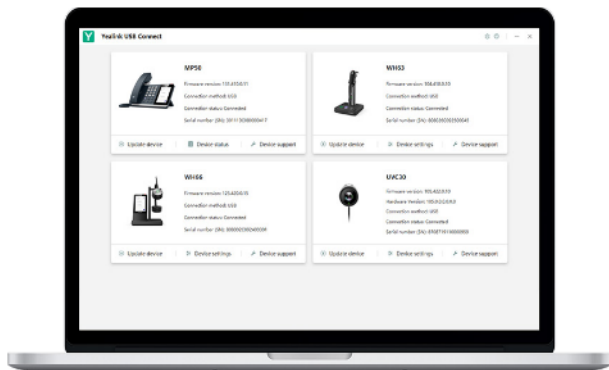
No.	Item	Action & Function
1	Touch Screen	<ul style="list-style-type: none"> • Display the battery status, headset connection status, etc. • Select items and navigate menus. • Display call status and perform call controls.
2	Mute Button	Press to mute or unmute microphone.
3	Volume Up Button	Press to turn up volume.
4	Call Control Button	<ul style="list-style-type: none"> • Press to answer or end a call. • Double tap to reject a call. • Hold 2 seconds to activate Cortana (this requires Microsoft's support). • Press to invoke the Teams client in the idle state.
5	Volume Down Button	Press to turn down volume.
6	Speaker	Provide hands-free (speakerphone) audio output.
7	Microphone	Provide hands-free (speakerphone) audio input.

Note: Before using the Teams functions, you should install the Microsoft Teams client on your PC.

Software

Yealink USB Connect

Yealink provides a USB device manager client - Yealink USB Connect, which you can use to personalize and manage your Yealink headsets.



Download it from the Yealink website <http://www.yealink.com/product/yac>

Regulatory Notices

Operating Ambient Temperatures

- Operating temperature: +32 to 104 °F (0 to 40°C)
- Relative humidity: 35% to 90%, non-condensing
- Storage temperature: -2 to +160°F (-30 to 40°C)

Warranty

Our product is warranted against the unit itself, when used normally, in accordance with the operating instructions and the system environment. We are not liable for damage or loss resulting from the use of this product, or for any claim from a third party. We are not liable for problems with Yealink device arising from the use of this product; we are not liable for physical damage, loss, or data loss from third parties etc., arising from the use of this product.

Compliance with the RoHS

- CE Marking
- DC Safety Symbol
- WEEE is the WEEE marking symbol.
- WEEE Warning Symbol

To avoid the potential effects on the environment and human health as a result of the presence of hazardous substances in electrical and electronic equipment, end users of electrical and electronic equipment should understand the meaning of the crossed out wheeled bin symbol. Do not dispose of WEEE as unsorted municipal waste and have to collect such WEEE separately.

Restriction of Hazardous Substances Directive (RoHS)

This device complies with the requirements of the EU RoHS Directive. Statements of compliance can be obtained by contacting support@yealink.com.

Safety Instructions

Save these instructions. Read these safety instructions before use.

General Requirements

- Before you install and use the device, read the safety instructions carefully and observe the situation during operation.
- During the process of storage, transportation, and operation, please always keep the device dry and clean, avoid collision and crash.
- Please attempt not to dismantle the device by yourself. In case of any discrepancy, please contact the appointed maintenance center for repair.
- Please refer to the relevant laws and statutes while using the device. Legal rights of others should be respected as well.

Environmental Requirements

- Place the device at a well-ventilated place. Do not expose the device under direct sunlight.
- Keep the device dry and free of dust.
- Do not place the device on or near any inflammable or fire-vulnerable object, such as rubber-made materials.
- Keep the device away from any heat source or bare wire, such as a candle or an electric heater.

Operating Requirements

- Do not let a child operate the device without guidance.
- Do not let a child play with the device or any accessory in case of accidental swallowing.
- Please use the accessories provided or authorized by the manufacturer only.
- The power supply of the device shall meet the requirements of the input voltage of the device. Please use the provided surge protection power socket only.
- Before plugging or unplugging any cable, make sure that your hands are completely dry.
- Do not spill liquid of any kind on the product or use the equipment near water, for example, near a bathtub, washbowl, kitchen sink, wet basement or near a swimming pool.
- During a thunderstorm, stop using the device and disconnect it from the power supply. Unplug the power plug and the Asymmetric Digital Subscriber Line (ADSL) twisted pair (the radio frequency cable) to avoid lightning strike.
- If the device is left unused for a rather long time, disconnect it from the power supply and unplug the power plug.
- When there is smoke emitted from the device, or some abnormal noise or smell, disconnect the device from the power supply, and unplug the power plug immediately.
- Contact the specified maintenance center for repair.
- Do not insert any object into equipment slots that is not part of the product or auxiliary product.
- Before connecting a cable, connect the grounding cable of the device first. Do not disconnect the grounding cable until you disconnect all other cables.

Battery Requirements

- Do not immerse the battery into water, which could short-circuit and damage the battery.
- Do not expose the battery to an open flame or leave the battery where it could be subjected to extremely high temperatures, which could cause the battery to explode.
- Do power the handset off before removing the battery.
- Do not try to use the battery for the power supply of any device other than this handset.
- Do not open or mutilate the battery, released electrolyte is corrosive and may cause damage to your eyes or skin.
- Use only the rechargeable battery pack delivered with the handset or those rechargeable battery packs expressly recommended by Yealink.
- Defective or exhausted battery should never be disposed of as municipal waste. Return old battery to the battery supplier, a licensed battery dealer or a designated collection facility.

Cleaning Requirements

- Before cleaning the device, disconnect it from the power supply.
- Use a piece of soft, dry and anti-static cloth to clean the device.
- Keep the power plug clean and dry.

Troubleshooting

The unit cannot supply power to Yealink device.

There is a bad connection with the plug.

1. Clean the plug with a dry cloth.
 2. Connect it to another wall outlet.
- The usage environment is out of operating temperature range.
1. Use in the operating temperature range
- The cable between the unit and the Yealink device is connected incorrectly.
1. Connect the cable correctly.
 2. You cannot connect the cable properly.
1. You did not have connected a wrong realink device.
 2. Use the correct power supply.
- Still does not work, may be in the port
1. Clean the port

Contact your dealer or authorized service facility for any further assistance.

FCC CAUTION

This device complies with part 15 of the FCC rules. Operation is subject to the following two conditions: (1) This device may not cause harmful interference, and (2) this device must accept any interference received, including interference that may cause undesired operation. Any changes or modifications not expressly approved by the party responsible for compliance could void the user's authority to operate the equipment.

(Note: This equipment has been tested and found to comply with the limits for a Class B digital device, pursuant to part 15 of the FCC Rules. These limits are designed to provide reasonable protection against harmful interference in a residential installation. This equipment generates, uses and can radiate radio frequency energy and, if not installed and used in accordance with the instructions, may cause harmful interference to radio communications. However, there is no guarantee that interference will not occur in a particular installation. If this equipment does cause harmful interference to radio or television reception, which can be determined by turning the equipment off and on, the user is encouraged to try to correct the interference by one or more of the following measures:

- Reorient or relocate the receiving antenna.
- Increase the separation between the equipment and receiver.
- Connect the equipment into an outlet on a circuit different from that to which the receiver is connected.
- Consult the dealer or an experienced radio/TV technician for help.

The equipment complies with FCC radiation exposure limits set forth for an uncontrolled environment.

This transmitter must not be co-located or operating in conjunction with any other antenna or transmitter.

FED WARNING

This Device complies with Innovation, Science and Economic Development Canada licence-exempt RSS standard(s). Operation is subject to the following two conditions: (1) this device may not cause interference, and (2) this device must accept any interference, including interference that may cause undesired operation of the device.

Le présent appareil est conforme aux CNR d'industrie Canada applicables aux appareils radio exempts de licence. L'exploitation est autorisée aux deux conditions suivantes : (1) l'appareil ne doit pas produire de brouillage, et (2) l'utilisateur de l'appareil doit accepter tout brouillage radioélectrique subi, même si le brouillage est susceptible d'en compromettre le fonctionnement.

This Class B digital apparatus complies with Canadian ICES 003. Cet appareil numérique de la classe B est conforme à la norme NMB-003 du Canada.

Les communications effectuées au moyen de cet appareil ne sont pas nécessairement protégées des indiscretions.

E. Regulatory Information

Support Frequency Bands and Power:

DECT 1.8GHz-1.9GHz< 24 dBm

Company Information

YEALINK NETWORK TECHNOLOGY CO., LTD.

Room 16, Yuhong Nongye Road, Huai District,

Xuzhou City, Jiangsu, P.R.C

YEALINK (EUROPE) NETWORK TECHNOLOGY B.V.

Strevin-Klein 3127, The Netherlands, 8th floor, 1177ZX

Amsterdam, The Netherlands

YEALINK (U.S.A.) NETWORK TECHNOLOGY CO., LTD.

999 Peachtree Street Suite 2300, Atlanta, GA, 30309, USA.

Made in China

Note: WH6x support Yealink T27G/T4xS/T4U/T53/T5xW/T58/VP59 through USB connection, and WH32/63 support Yealink T3x with EHS35. To have better experience, the phone firmware recommended to be v86 (x.x.06.11.27) or higher. You can find more detail in "Yealink Headset Compatibility Guide" from Yealink support website.

If your headset needs warranty service, the process is quick and easy. Please go to <https://ticket.yealink.com/page/headset/warranty-service.html> and submit RMA Claim to Yealink.

Need more help?



Yealink Documentation
& Video



Yealink Headset
Compatibility Guide

Technical Support

visit Yealink Wiki (<http://support.yealink.com/>) for the latest firmware, guides, FAQ, product documents, and more. For better service, we sincerely recommend you to use Yealink Ticketing system (<https://ticket.yealink.com/>) to submit all your technical issues.



430104001717

YEALINK(XIAMEN) NETWORK TECHNOLOGY CO.,LTD.
web: www.yealink.com
Copyright©2022 YEALINK(XIAMEN) NETWORK
TECHNOLOGY CO.,LTD. All rights reserved.

